

# First Line of Defense Controller Software for the DDS 5500 and IPS 5500

## Centralized Configuration and Policy Management for Multiple First Line of Defense Deployments

Corero's DDS/IPS 5500 family of First Line of Defense systems are targeted for medium to large enterprises, service providers, and governments. As such, the typical deployment consists of numerous devices installed in high-availability ProtectionCluster™ configurations and in geographically diverse locations.

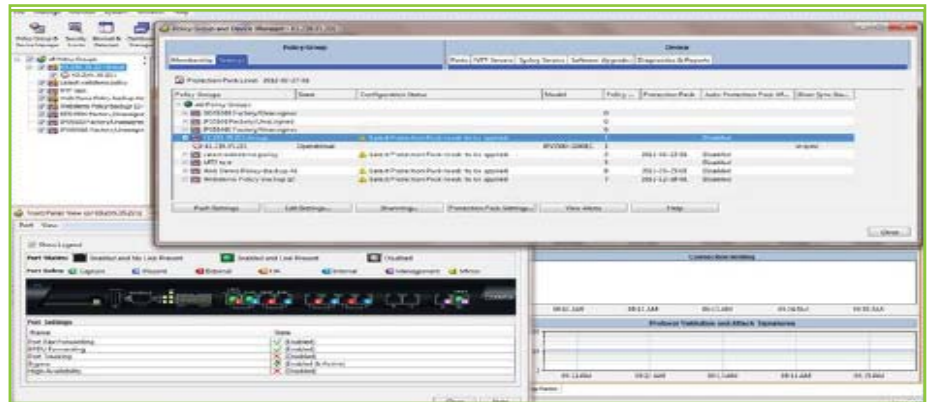
A critical requirement of these multiple-device deployments is the ability to configure and manage devices from a central location. This data sheet outlines the First Line of Defense Controller, Corero's multi-device configuration software. The Controller and the free Network Security Analyzer (NSA) security information and event management (SIEM) software tool comprise Corero's Secure Command centralized management solution.

### First Line of Defense Controller Overview

Corero's Controller configuration tool is offered as a software solution. The Controller maintains secure connections to the First Line of Defense devices it is managing. The administrator interacts with the Controller remotely via GUI using a Java application that works in a similar fashion to the DDS/IPS 5500 device manager.

### Key Benefits

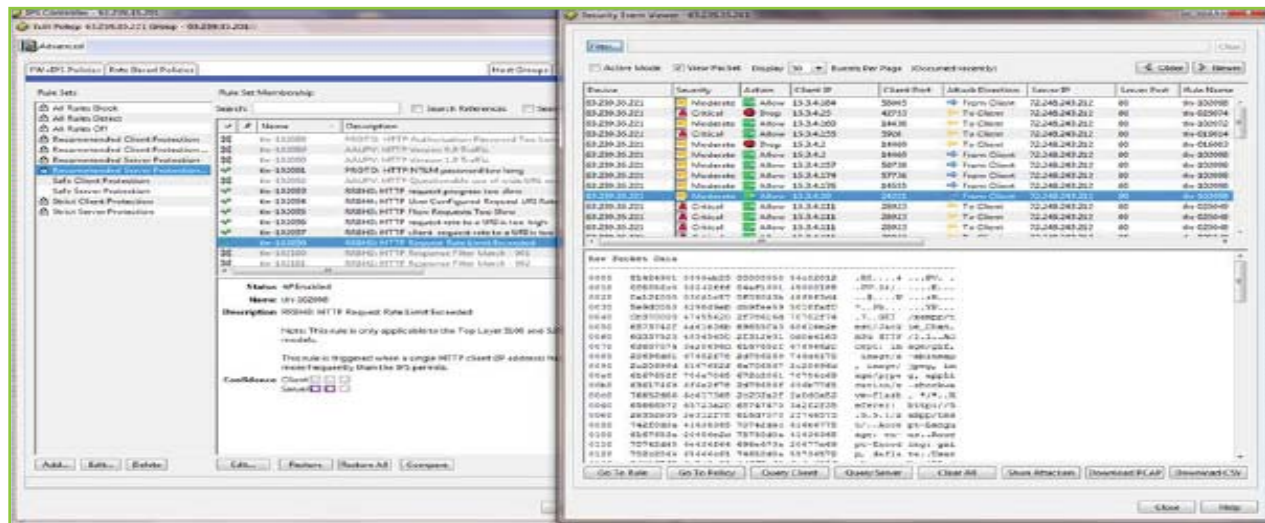
- *Provides single-screen visibility into the health of the First Line of Defense infrastructure as part of a complete DDS/IPS centralized management system*
- *Configures security infrastructure end-to-end or in user-defined groups rather than as individual product "silos"*
- *Reduces time spent managing and configuring DDS/IPS units, allowing valuable security personnel time to perform more critical tasks*



### Controller is the “Command and Control” portion of Corero’s Central Management System, and it provides the following functionality:

- High-level “dashboard” summary display that provides at-a-glance status for the entire set of DDS/IPS 5500s
- User-defined groupings of DDS/IPS 5500s
- Real-time display of status for all DDS/IPS 5500s, high-availability ProtectionClusters and groups
- Easy management of high-availability clusters
- DDS/IPS 5500 software upgrade management
- Off-line editing and validation of DDS/IPS 5500 configurations and policies
- Deployment of configuration and policy to individual or groups of DDS/IPS 5500s
- Fully detailed audit trail for configuration and policy changes

## Corero Controller



Real-time Security Event Viewer allows identification of security events of interest and enables drill-down to packet detail level.

## Recommended System Requirements:

### Controller Requirements (Required for managing more than 8

#### DDS/IPS units):

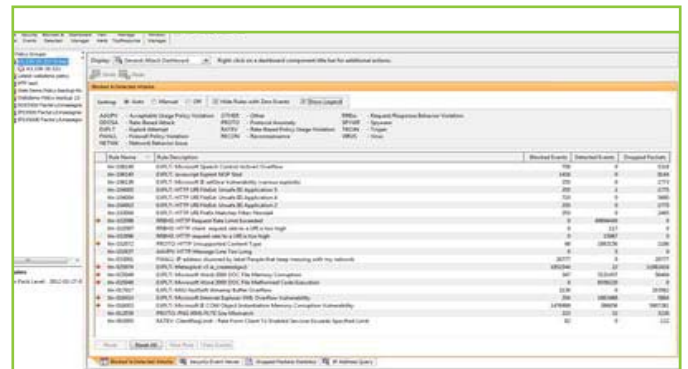
- Dual 3.2 GHz Xeon or greater
- 4 GB RAM
- 18 GB of available hard disk space
- Network connection

The following Linux operation systems are supported for 32-bit machines only:

- Red Hat Enterprise Linux Release 5.3, 6.3
- Fedora Core 6, Fedora 10,15
- CentOS 5.3, 6.3

### Virtual Server - VMware (ESXi Server 4.0.0):

- 2.8 GHz Pentium 4 or greater
- 4 GB RAM
- 200 GB of available hard disk space
- CD or DVD Drive
- Network connection



Real-time Blocked and Detected Attack summary screen provides starting point for incident response.

See VMware Compatibility Guide for additional information:

<http://www.vmware.com/resources/compatibility/search.php?action=base&deviceCategory=server>

## About Corero Network Security

Corero Network Security, an organization's First Line of Defense, is an international network security company and the leading provider of Distributed Denial of Service (DDoS) defense solutions. As the First Line of Defense, Corero's products and services stop DDoS attacks, protect IT infrastructure and eliminate downtime. Customers include enterprises, service providers and government organizations worldwide. Corero's appliance-based solutions are dynamic and automatically respond to evolving cyber attacks, known and unknown, allowing existing IT infrastructure — such as firewalls — to perform their intended purposes. Corero's products are transparent, highly scalable and feature the lowest latency and highest reliability in the industry. Corero is headquartered in Hudson, Massachusetts with offices around the world. [www.corero.com](http://www.corero.com).

### Corporate Headquarters

1 Cabot Road  
Hudson, MA 01749  
Phone: +1.978.212.1500  
[www.corero.com](http://www.corero.com)

### EMEA Headquarters

68 King William Street  
London, England  
EC4N 7DZ  
Phone: +44 (0) 207.959.2496