



Clavister InControl

Product Data Sheet

- Centralized Management
- Unified Administration of all Clavister Security Gateways, including Clavister Virtual Security Gateway Series
- Highly Scalable and Versatile Client/Server Architecture
- Task-Driven Workflow Management Support
- Built-In AAA Support
- Comprehensive Clavister InControl Logging Agent and Log Forensics
- Version Control for Modifying Configurations
- Built-In License Center
- Configuration Consistency Control
- Backup and Restore
- Support for Clavister InControl Software Development Kit (SDK)

Introducing Clavister InControl

For any large enterprise, Managed Service Provider or Data Center, the challenge of managing security in large installations requires an easy-to-use, centralized and scalable solution. Administrators must keep security policies cohesive and up-to-date across multiple domains and geographical dispersed environments, often containing large numbers of security devices.

Clavister InControl offers a comprehensive centralized management solution that will assist and help administrators perform their daily tasks faster, easier and more streamlined. Its intuitive user interface and support for task-driven workflow management guides administrators through complex and repetitive tasks, thus alleviating the burden of managing large installations.

Special considerations are provided for Data Centers and Managed Service Providers, supporting their customer's unique security policy needs. Many of these customers require that the integrity of their data is kept confidential, requiring security mechanisms for accessing and changing security policies. It is also vital that Data Centers and Managed Service Providers are able to deploy and provision security devices to support a constantly changing customer base.

Clavister InControl Architecture

The Clavister InControl centralized management solution is built on a modern, robust and scalable client/server architecture. It is a unified solution for all Clavister Security Gateway products, regardless if they are hardware appliances or virtual appliances. It works the same way across all Clavister Security Gateway products.

The Clavister InControl solution consists of the Clavister InControl Server and one or more Clavister InControl Clients. The Clavister InControl Server is capable of servicing a large number of concurrent administrators and several thousand Clavister Security Gateways. The Clavister InControl solution also includes the comprehensive Clavister InControl Logging Agent (ILA), which can reside alongside the Clavister InControl Server or on standalone hosts depending on traffic load or preference.

Clavister InControl Server

The Clavister InControl Server is extremely robust and is capable of servicing a large number of administrators and configured devices. Built for scalability and flexibility, the Clavister InControl Server is responsible for all communication between the Clavister InControl Clients and the Clavister ILA, as well as with all Clavister Security Gateways in the network.

Alarm Center

Clavister InControl features comprehensive alarm and notification functionality called Alarm Center. All events, either triggered by the system or by a user, are displayed in the Alarm Center window. This enables system administrators to keep abreast of actions that need to be handled within the system. A system administrator can either clear the event or acknowledge the event and rectify the situation. It is also possible to filter on different severity types, entity type, flag status and time intervals.

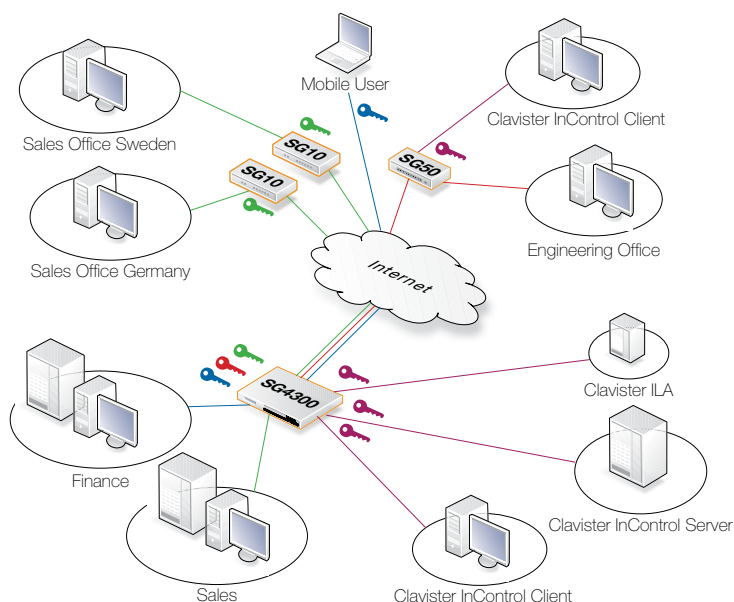
The Alarm Center is a powerful addition to any network installation and will keep system administrator fully aware of what is happening in their network system.

Clavister InControl Client

The Clavister InControl Client is the graphical user interface which administrators use for everyday work and it offers a multitude of functionality and performance enhancements for administrators. Using the schema-based design, the Clavister InControl Server will generate the user interface controls displayed by the Clavister InControl Client. This enables the Clavister InControl Client to service new versions and models of Clavister Security Gateway without having to upgrade Clavister InControl.

Clavister InControl Logging Agent

Included with Clavister InControl is a comprehensive logging solution comprised of Clavister InControl Logging Agent (ILA). The log forensics in Clavister InControl Client offers advanced search, sort and filtering functionality, which makes it easy for any administrator to find exactly what they are looking for. It is also possible to run the log forensics in real-time mode; a feature which comes in handy when troubleshooting network traffic.



Typical network scenario featuring Clavister InControl

Device Configuration

Clavister InControl uses a task-driven approach, which enables administrators to quickly and easily configure new Clavister Security Gateways, Domains, Monitor Dashboards and other elements for their network environment. This reduces the overall configuration time for deployment and ensures a consistent work practice.

Administrators can also enjoy a number of productivity enhancements, such as personal favorites which enable administrators to drag commonly used Clavister Security Gateways to the Favorites view for easy access. There is also a global Search function and advanced filtering capabilities.

Domain-Based Policy Management

It is easy to enforce policy rules in Clavister InControl. Global policy rules are managed through a Global Domain object, which simplifies the creation of mandatory corporate policies across all devices in the network. These settings will be propagated to all Clavister Security Gateways in the network. Using this hierarchical approach, it is easy to create sub-domains, where each sub-domain can contain other sub-domains. This provides scalability and flexibility from a centralized management location while leveraging commonalities across the whole environment.

Delegated Management

It is important to make sure that only the right people have access to the right systems and can only do what they should. With Delegated Management it is possible to create Groups where you set read/write permissions based on whether the Group should be able to configure Clavister

User Interface

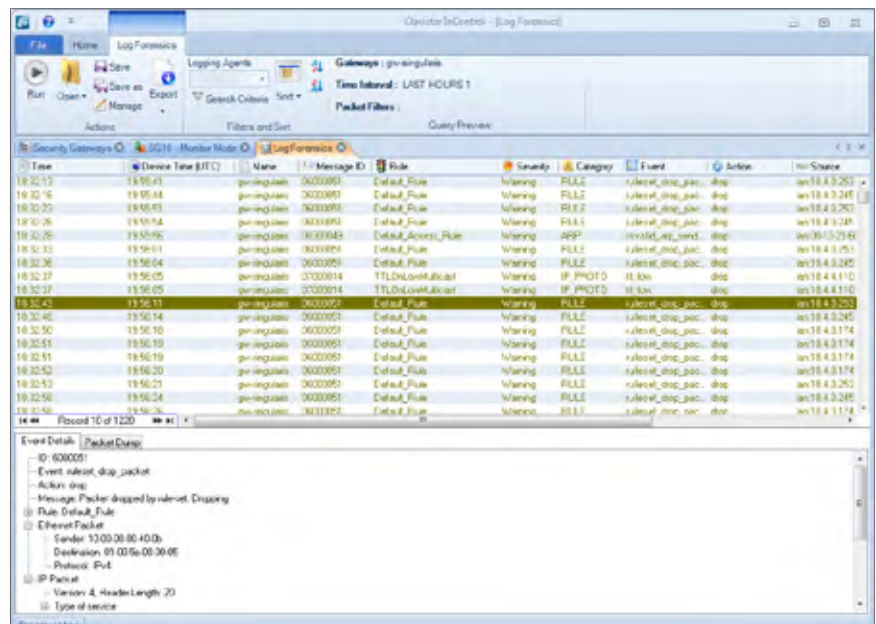
The Clavister InControl user interface follows the common Microsoft Windows Ribbon standard, which makes it easy to learn and work with. It features tabbed windows, foldable palettes and windows so administrators can tailor their work environment to the personal taste.

This makes it easy to configure your work environment layout to display only relevant information.

License Center

Take full control over all your licenses with the built-in License Center. You can view the status of all your licenses and any extra services, such as Intrusion Detection and Prevention, Anti-Virus and Web Content Filtering.

This feature enables you to have full control over all your subscriptions. No more worries about licenses expiring and jeopardizing your network security.



Security Gateways, view monitoring status, perform audits and create new Groups. It is possible to import groups from Microsoft Active Directory and assign permissions to those groups.

It is also possible to limit access to specific Clavister Security Gateways so that one administrator can only manage one or more specific Clavister Security Gateways. This makes it very easy to delegate the workload between several administrators while keeping full control on who is doing what.

Features and Benefits

Built-In AAA Support. With support for AAA (Authentication, Authorization and Audit) the integrity and configurations managed by the Clavister InControl system is kept under strict control. Administrators are required to authenticate to gain access to authorized parts of the system. A comprehensive audit log is also available for security audits.

Delegated Management. Clavister InControl support delegated management which enables administrators to assign limited administrator rights to specific administrators.

Real-Time Monitoring. The Real-Time Monitoring functionality enables administrators to actively monitor the status of a large number of Clavister Security Gateways. This functionality is highly configurable, and supports many different graphical elements, giving administrators the ability to view the overall status from one centralized location.

Schema-Based Architecture. The Clavister InControl is schema-based, which enable administrators to support Clavister CorePlus™ updates and new Clavister Security Gateways quickly without having to upgrade Clavister InControl.

Version Control. Configurations are kept under strict version control. Administrators must check out configurations before they can make changes. Before checking in modified configurations, administrators can perform version comparison enabling administrators to quickly identify changes made and even roll back to previous working versions if needed.

Configuration Consistency Control. Configurations that are checked in are scrutinized for inconsistencies, errors and other anomalies. Errors and warnings are highlighted and the administrator can click the Resolution button to highlight the offending section and quickly solve the problem.

Backup and Restore. Clavister InControl comes with two types of backup/restore functions; full backup of any device or configuration only for any device.

Authentication. Clavister InControl support three types of authentication methods; local user database, RADIUS and Microsoft Active Directory with full group support.

Clavister InControl Specifications

	Clavister InControl Server	Clavister InControl Client	Clavister InControl Logging Agent
Minimum Requirements			
Operating System	Microsoft Windows XP, SP3 Microsoft .NET Framework 3.0, SP2	Microsoft Windows XP, SP3 Microsoft .NET Framework 3.5	Microsoft Windows XP, SP3 Microsoft .NET Framework 3.0, SP2
Hard Disk Space*	100 MB (available hard disk space for installation)		
RAM	1 GB		
Recommended Requirements			
Operating System	Microsoft Windows 7 Microsoft Windows 2008 Server, R2 Microsoft .NET Framework 3.5	Microsoft Windows 7 Microsoft .NET Framework 3.5	Microsoft Windows 7 Microsoft Windows 2008 Server, R2 Microsoft .NET Framework 3.5
Hard Disk Space*	1 GB	100 MB	1 GB
RAM	4 GB		
Processor	Intel i7 Processor (or processor with equivalent specifications)		
Screen Resolution	1280 x 1024 pixels (or higher resolution)		
Clavister Security Gateway	Requires Clavister CorePlus 9.20.01 or higher		
Warranty	All products in the Clavister InControl Series come with a ninety (90) days Software maintenance covering all major and minor software releases counting from the Start Date. Start Date means the earlier of Product registration or ninety (90) days following shipment from Clavister.		

Specifications subject to change without further notice.

* Additional data requires more hard disk space and may vary depending on your configuration.

NOTE: For product license options and support options, please visit: www.clavister.com or contact your local Clavister Sales Representative.

Clavister InControl SDK

The Clavister InControl Software Development Kit (SDK) further extends the service integration ability of the Clavister Security Services Portfolio. The Clavister InControl SDK consists of an Application Programming Interface (API), developer documentation and code examples, offering customers and third-party integrators an easy way of developing custom integrated solutions for Clavister InControl Server.

Clavister InControl SDK is a separately licensed product. For more information, please download the **Clavister InControl SDK** brochure available from www.clavister.com or contact your local Clavister Sales Representative.

About Clavister

For over a decade, Clavister has been delivering leading network security solutions, providing commercial advantage to businesses worldwide. The Clavister family of Carrier Telecom Security Systems, unified threat management (UTM) appliances and remote access solutions provide innovative and flexible network security with world-class management and control. Clavister is a recognized pioneer in virtualization and cloud security. This complements its portfolio of hardware appliances delivering customers the ultimate choice of network security products. Clavister products are backed by Clavister's award-winning support, maintenance and training program. Clavister boasts an unprecedented track record in pioneering network security solutions including the two largest deployments of Virtual Security Gateways in the world to date.

Clavister's solutions are sold through International sales offices, distributors, and resellers throughout EMEA and Asia.

To learn more, visit www.clavister.com.

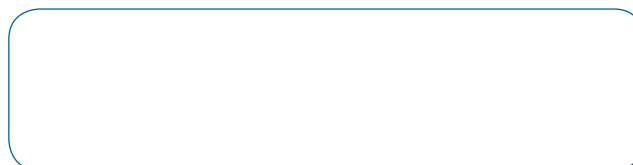
Clavister Contact Information

Sales Offices

www.clavister.com/about-us/contact-us/worldwide-offices

General Contact Form

www.clavister.com/about-us/contact-us/contact-form



CID: clavister-dts-clavister-incontrol (2011/05)

CLAVISTER®
WE ARE NETWORK SECURITY

Clavister AB, Sjöгатan 6 J, SE-891 60 Örnsköldsvik, Sweden
Phone: +46 (0)660 29 92 00 | Fax: +46 (0)660 122 50 | Web: www.clavister.com