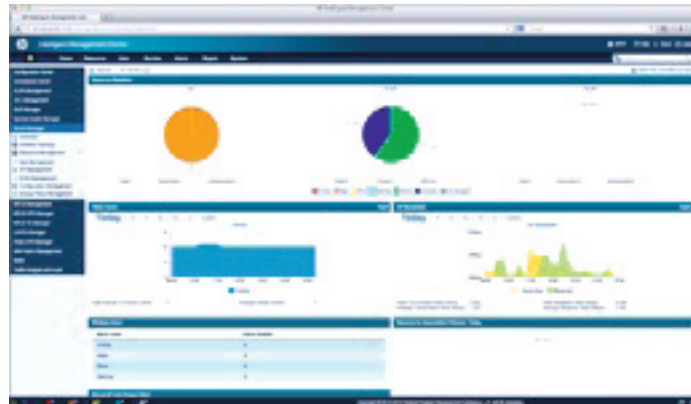




HP IMC Wireless Services Manager Software



Key features

- Intuitive, easy-to-use interface
- Unified wired and wireless device management
- Range of topology management modes
- Low maintenance costs and low TCO

Product overview

HP Intelligent Management Center (IMC) software is a modular comprehensive resource management platform. With its extensive device support, IMC software provides true end-to-end management for the entire network, and entire operation cycle.

An optional IMC module, HP IMC Wireless Services Manager (WSM) software provides unified management of wired and wireless networks, adding network management functions into existing wired network management systems. IMC WSM software offers wireless LAN (WLAN) device configuration, topology, performance monitoring, RF heat mapping, and WLAN service reports.

IMC WSM software facilitates centralized control over your wireless network, even if it is geographically dispersed. This reduces the time needed to deploy configuration changes and provides uniformity throughout your WLAN infrastructure.

Features and benefits

Management

- **NEW WLAN device management**

IMC Wireless Services Manager (WSM) software supports the HP MSM series of WLAN devices, including controllers, fit access points (APs), and fat APs; it also supports the Cisco wireless infrastructure

- **WLAN device management**

- access controller list
- access controller detail information
- fit/fat AP list
- fit/fat AP detail information

- **Wireless status view**

IMC WSM software displays key information in one place; for controllers, it maintains status on mobility activity, DHCP server, VPNs, ports, VLANs, IPSec, and RADIUS; for APs, the software provides details on usage at the client level down to the CPU load level and across neighbors and local meshes; provides north-south status views (high-level health down to detailed status of services such as your RADIUS running on controllers)

- **WLAN management**

automatically displays WLAN SSIDs in your network, compares performance, and relates APs to the WLAN by SSID

- **Batch configuration wizard**

the batch configuration wizard can help users configure the WLAN network step by step, including WLANs, AP groups, and radio parameters

- **Topology—access controller and fit AP logical topology**

displays logical and physical views of WLAN by AP, controller, or WLAN, and view status as well as detailed information in real time; provides links to quickly click and find device location

- **Location views**

location topology feature shows the physical position for each AP and supports the JPG/PNG format background image; RF coverage displays the radio frequency coverage area of each AP to help you locate the problem of slow access speed or network access failure; you can then redeploy APs or adjust radio power or channel parameters to achieve the best signal coverage with the lowest cost

- **RF predictor**

- shows area coverage so you can predict the coverage before buying or moving APs
- antennas shape direct signals so you can play with antenna types and add in obstacles to plan for best performance
- predicts best placement of APs based on scale and obstacles you provide
- send and save your RF plan using popular file formats

- **Client management**

because connection issues require information about your client, IMC WSM software tracks client connection history, and provides top-down (AP-to-client) and client-to-AP views to ease troubleshooting processes

- **Performance monitoring**

IMC WSM software displays graphs and performance charts for wireless devices status, wireless alarms statistics, online client trending, and AP traffic monitoring; users can define tasks to monitor performance items of interest

- **WLAN reports**

provide AP statistics, radio statistics, client statistics, and traffic statistics

- **Wireless terminal trace display**

logs the online and offline records of a wireless terminal and uses these records to display the movements of the wireless terminal in the location view

- **WDS/mesh management**

IMC WSM software displays local mesh neighborhood and local mesh link information

- **PoE port management**

to facilitate management, IMC WSM software can automatically learn which APs are connected to a switch's PoE ports, enabling control of those PoE ports; fault AP can be set to perform a cold restart, which will be a fast resume

- **Google Maps™ integration**

with IMC WSM software support for Google Maps integration, users can add hotspots to the map, view the number of APs and clients in the hotspot, and jump to the location topology from the hotspot to view detailed information

- **Wireless intrusion detection integration**

helps manage the intrusion detection system at the controller level

- **Support for HP MSM AP radio resource management**

provides configuration management of radio resources, including auto power, auto channel, and scheduling

- **Location-based services**

locate MSM APs and connected clients

- **NEW Real-time Spectrum Guard**

IMC WSM software spectrum analysis scans the 2.4 GHz and 5 GHz frequency bands to detect interference and affected channels, as well as to generate real-time spectrum data; operators can obtain the wireless spectrum performance and WLAN security by viewing the current interference data and real-time spectrum data; real-time Spectrum Guard requires a license

Warranty and support

- **Electronic and telephone support**

limited electronic and business-hours telephone support is available from HP for the entire warranty period; to reach our support centers, refer to **www.hp.com/networking/contact-support**; for details on the duration of support provided with your product purchase, refer to **www.hp.com/networking/warrantysummary**

- **Software releases**

to find software for your product, refer to **www.hp.com/networking/support**; for details on the software releases available with your product purchase, refer to **www.hp.com/networking/warrantysummary**

HP IMC Wireless Services Manager Software

Specifications



HP IMC Wireless Service Manager Software Module with 50-Access Point E-LTU (JF414AAE)

Minimum system hardware	3.0 GHz Intel® Pentium® III or equivalent processor 4 GB RAM memory 30 GB storage 10/100 Mbps NIC
Recommended system hardware	3.0 GHz Intel® Xeon® or Intel® Core™2 Duo processor or equivalent processor 8 GB RAM memory 150 GB storage 1000 Mbps NIC
Recommended software	Microsoft® Windows® Server 2003 Enterprise Edition SP2 Microsoft® Windows® Server 2003 Enterprise Edition SP2 (32-bit) Microsoft® Windows® Server 2008 (32-bit or 64-bit) Standard or Enterprise Edition Microsoft® Windows® Server 2008 R2 (64-bit) Standard or Enterprise Edition
Browsers	Microsoft Internet Explorer 6.0 or later Firefox 3.0
Notes	It should be a standalone server that is not on the same server as the IMC platform.
Services	3-Year, 9x5 SW phone support, software updates (UV740E) 3-year, 24x7 SW phone support, software updates (UV741E) Refer to the HP website at www.hp.com/networking/services for details on the service-level descriptions and product numbers. For details about services and response times in your area, please contact your local HP sales office.

HP IMC Wireless Services Manager Software accessories

License

HP IMC Wireless Services Manager 50-Access Point E-LTU (JF415AAE)

HP IMC Wireless Services Manager Components Location Service Package
E-LTU (JG142AAE)

HP IMC Wireless Service Manager / Real-Time Spectrum Guard E-LTU
(JG816AAE)

HP IMC Wireless Service Manager / Real-Time Location Services Additional
50-node E-LTU (JG759AAE)

HP PCM Mobility Manager to IMC Wireless Service Manager Upg with 250-node
E-LTU (JG769AAE)

To learn more, visit hp.com/networking

© Copyright 2010-2013 Hewlett-Packard Development Company, L.P. The information contained herein is subject to change without notice. The only warranties for HP products and services are set forth in the express warranty statements accompanying such products and services. Nothing herein should be construed as constituting an additional warranty. HP shall not be liable for technical or editorial errors or omissions contained herein.

Google Maps is a trademark of Google Inc. Intel, Core, Pentium, and Xeon are trademarks of Intel Corporation in the U.S. and other countries. Microsoft and Windows are U.S. registered trademarks of Microsoft Corporation.

4AA3-0720ENW, Created September 2010; Updated September 2013, Rev. 5

