

**CLEAN DEVELOPMENT MECHANISM  
PROJECT DESIGN DOCUMENT FORM (CDM-SSC-PDD)  
Version 03 - in effect as of: 22 December 2006**

## **CONTENTS**

- A. General description of the small scale project activity
- B. Application of a baseline and monitoring methodology.
- C. Duration of the project activity / crediting period.
- D. Environmental impacts
- E. Stakeholders' comments

## **Annexes**

- Annex 1: Contact information on participants in the proposed small scale project activity.
- Annex 2: Information regarding public funding
- Annex 3: Baseline information
- Annex 4: Monitoring Information

**Revision history of this document**

<b>Version Number</b>	<b>Date</b>	<b>Description and reason of revision</b>
01	21 January 2003	Initial adoption
02	8 July 2005	<ul style="list-style-type: none"> <li>The Board agreed to revise the CDM SSC PDD to reflect guidance and clarifications provided by the Board since version 01 of this document.</li> <li>As a consequence, the guidelines for completing CDM SSC PDD have been revised accordingly to version 2. The latest version can be found at <a href="http://cdm.unfccc.int/Reference/Documents">http://cdm.unfccc.int/Reference/Documents</a>.</li> </ul>
03	22 December 2006	<ul style="list-style-type: none"> <li>The Board agreed to revise the CDM project design document for small-scale activities (CDM-SSC-PDD), taking into account CDM-PDD and CDM-NM.</li> </ul>

**SECTION A. General description of small-scale project activity**
**A.1. Title of the small-scale project activity:**

BRASCARBON Methane Recovery Project BCA-BRA-13.  
Version 5, 20<sup>th</sup> May, 2011, Brazil

**A.2. Description of the small-scale project activity:**

**Purpose:** The purpose of this project is to mitigate and recover animal effluent related Greenhouse Gas (GHG) by improving the Animal Waste Management System practices in the confined animal feed operations in the cities located at the Mato Grosso do Sul state, central Brazil, developed by BRASCARBON. In Brazil the agricultural operations related to the confined animals operations are very wide and grow progressively and intensive to attend the worldwide food demand.

There are three types of Confined Animal Operation for this project: finishing, breeding and nursery.

The confined animal wastewater operation consists of transporting wastewater, which consists of fresh water mixed with manure and urine that accumulates in pits under or beside the barns, to one open lagoon for evaporation, fed by gravity pipeline systems. The organic material degraded in the primary treatment lagoon is digested, thereby producing significant amounts of methane.

These systems emit methane (CH<sub>4</sub>) resulting from anaerobic decomposition process. The swine livestock operations create profound environmental consequences, such as greenhouse gas emissions, odour, and water/land contamination that result from storing animal waste. Therefore this operation is not sustainable due to its severe environmental pollution.

The Project Activity consists in the construction of a new covered in-ground anaerobic reactor (digester) that will utilize the organic material currently treated in the wastewater opened lagoon, from the confined animal operations to produce biogas. All manure will be sent daily directly to digester not exceeding 24 hours in the barns.

This project proposes to apply the Methane Recovery methodology identified in Section III.D, of the Indicative Simplified Baseline and Monitoring Methodologies for Small-Scale CDM Project Activity Categories, to swine confined feed operations located in the Mato Grosso do Sul state, in Brazil. The expected result of this project is a significant reduction of GHG emissions compared to those emissions that would have occurred in the absence of the project and also promotion of sustainable swine production farms, bringing environmental and social benefits, moving from a high-GHG animal waste management system practice to anaerobic digester with capture and combustion of resulting biogas.

**Contribution to sustainable development:**

According to Brazil's Inter-Ministerial Commission on Global Climatic Change<sup>1</sup>, manure management is an important issue that needs to be solved. The swine waste storage and treatment systems in Brazil consist of open tanks, open digesting and ponds (anaerobic lagoons)

<sup>1</sup><http://www.ambientebrasil.com.br>

once they are the most economic and viable system approved to manage the manure in confined animals feed operations. Economic barriers are very common because producers invest in the confined feed operations only and not in the waste management systems. Financial resources are always used to maintain the confined feed operation in operation. Also less technology for waste treatment is involved, as open lagoons need less employees and technicians for operation and maintenance. For these reasons the project is additional and more details can be found in the section B.5.

Very few bio-digesters exist or the producer invests to have a modern waste management system. The material cumulated in the open lagoons is normally distributed by pumps or gravity and applied to crops and pastures. EMBRAPA stimulated by the Expansion and Waste Treatment Program of the State of Santa Catarina<sup>2</sup> published a Good Practices manual with instructions and publications to help the producers and agro-industries implementing projects or systems to control the animal waste and therefore protecting the eco-system<sup>3</sup>.

Failure to do so will increase existing problems (such as increased (insect pest populations) and also problems with allergies and livestock disease. To this end, Brazil has in recent years, required all confined animals feed operations to change from single to multi-lagoon systems, introducing Good Practices in confined animal feed operations and, even more recently, has required them to line the bottom of their primary sedimentation lagoon to prevent effluent infiltration.

In 2005, the swine population in Mato Grosso do Sul state was 855,000.<sup>4 5</sup> Considering that a typical hog produces 4.9 kilograms of effluent daily (Table A1), annually some 4.2 million metric tons of hog waste are produced in this state alone. Introducing a progressive animal waste management practices throughout this region of Brazil could result in an annual reduction of approximately 655 thousand tonnes<sup>6</sup> of carbon dioxide equivalent (CO<sub>2</sub>e/year).

**Table A1. Daily production of effluent by type of swine production**

Stage	Manure kg/day	Manure and Urine kg/day	Volume litres/day
<b>25-100 kg</b>	2.3	4.9	7.0
<b>Gestating sows</b>	3.6	11.0	16.0
<b>Nursing sows</b>	6.4	18.0	27.0
<b>Boar pig</b>	3.0	6.0	9.0
<b>Piglet</b>	0.35	0.95	1.4

**Source:** PNMA-II – Projecto de Controlo da Degradação Ambiental Decorrente da Suinocultura em Santa Catarina, coordenado pelo Sr. Paulo Armando Vitoria de Oliveira, Concordia – SC, EMBRAPA Suínos e Aves, 2004; [http://www.cnpsa.embrapa.br/pnma/pdf\\_doc/doc\\_pnma.pdf](http://www.cnpsa.embrapa.br/pnma/pdf_doc/doc_pnma.pdf)

<sup>2</sup>PNMA-II – Projecto de Controlo da Degradação Ambiental Decorrente da Suinocultura em Santa Catarina, coordenado pelo Sr. Paulo Armando Vitoria de Oliveira, Concordia – SC, EMBRAPA Suínos e Aves, 2004; [http://www.cnpsa.embrapa.br/pnma/pdf\\_doc/doc\\_pnma.pdf](http://www.cnpsa.embrapa.br/pnma/pdf_doc/doc_pnma.pdf)

<sup>3</sup> Boas Práticas de Produção de Suínos: [http://www.cnpsa.embrapa.br/sgc/sgc\\_publicacoes/publicacao\\_k5u59t7m.pdf](http://www.cnpsa.embrapa.br/sgc/sgc_publicacoes/publicacao_k5u59t7m.pdf)

<sup>4</sup> IBGE – Pesquisa Pecuária Municipal ([www.ibge.gov.br](http://www.ibge.gov.br)).

<sup>5</sup> [www.agricultura.gov.br](http://www.agricultura.gov.br)

<sup>6</sup> Approximate calculation using IPCC model and emission factors

### **Socio-Economic Sustainability**

- Improvement in air quality (e.g. – reduction of Volatile Organic Compounds [VOCs]) and worker safety;
- Elimination of odors in surrounding areas, which will improve living standards of neighbors communities;
- Proper handling of the animal waste ensuring an adequate level of protection of human health and the environment;
- By improving the waste management system at the farm, the project will support the continued production of pork in order to meet the consumption needs of the growing global population.

### **Economic Sustainability**

- An increase in local employment of skilled labor for the manufacturing, installation, Operation and maintenance of equipment;
- Additional employment opportunities in the agro-industrial sector, specifically from the use of recycled water from the waste management system on the farms for agricultural activities in surrounding land;
- Infrastructure improvement is in direct alignment with the national goals and objectives for agriculture, livestock, rural development, fishing and nutrition.

### **Environmental Sustainability**

- An overall decrease in the amount of Greenhouse Gases (GHGs) emitted into the atmosphere;
- Improvement in the quality of the water used in the waste management system and its potential use as water for irrigation;
- Avoiding potential dumping of waste into clean sources of water.

### **Technological Sustainability**

- This project will promote a model for the reduction of GHG's produced by Confined Animal Operation and promote a transfer of technology for methane production and capture through anaerobic digestion and combustion.

#### **A.3. Project participants:**

<b>Name of Party involved (*) (host) indicates a host Party)</b>	<b>Private and/or public entity(ies) project participants (*) (as applicable)</b>	<b>Kindly indicate if the Party involved wishes to be considered as project participant (Yes/No)</b>
Brazil (host)	• Brascarbon Consultoria, Projetos e Representação S/A (private entity)	No
Portugal	Luso Carbon Fund – Fundo Especial de Investimento Fechado	No

(\*) In accordance with the CDM modalities and procedures, at the time of making the CDM-PDD public at the stage of validation, a Party involved may or may not have provided its approval. At the time of requesting registration, the approval by the Party(ies) involved is required.

#### A.4. Technical description of the small-scale project activity:

##### Anaerobic digestion

The technology used is an anaerobic digestion process in which microorganisms break down biodegradable material in the absence of oxygen. The process is widely used to treat wastewater sludge and organic wastes because it provides volume and mass reduction of the input material.

As part of an integrated waste management system, anaerobic digestion reduces the emission of the greenhouse gas into the atmosphere. Anaerobic digestion is a renewable energy source because the process produces a methane and carbon dioxide, rich biogas, suitable for energy production helping replace fossil fuels. The nutrient-rich solids left after digestion can be used as fertilizer also.

The digestion process begins with bacterial hydrolysis of the input materials in order to break down insoluble organic polymers such as carbohydrates and make them available for other bacteria. Acidogenic bacteria then convert the sugars and amino acids into carbon dioxide, hydrogen, ammonia, and organic acids. Afterwards, acetogenic bacteria convert these resulting organic acids into acetic acid, along with additional ammonia, hydrogen, and carbon dioxide. Methanogenic bacteria finally are able to convert these products to methane and carbon dioxide.

The equipment is based in one ambient temperature storage covered cells (lagoon) with sufficient capacity to create an adequate Hydraulic Retention Time (HRT). The cell will use a single-piece liner affixed to a reinforced outer concrete frame. The outer cover consists of a synthetic vinyl membrane or High Density Polyethylene (HDPE), which is also fastened to the frame. The liner and cover will be sealed together with bolts and iron plate frame. The system also includes a biogas collector piping, from the digester to the flare system.

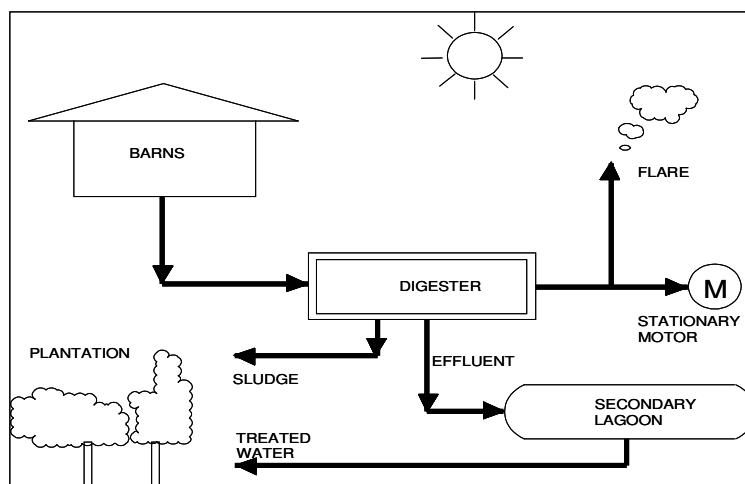
The flare is enclosed and controlled by a data logger CLP –Controller Logic Programmable – where the combustion temperature is stored every one minute in the system. This system will record every each minute the combustion temperature to determinate the flare efficiency. A thermocouple installed in the flare is connected to the PLC to register the combustion temperature. The sparking system in the flare is automatic. Every one second the system sparks. The biogas flow rate will be also controlled by a CLP where every each minute the system records the flow rate. The sparking system, the PLC and the control panel are powered by a 12 volts battery charged by solar cells.

A derivation pipe will be installed before the flare and after the flow meter, for future proposals, to supply biogas to the electricity generators, for in site electricity supply where **no claims for emissions reductions by the electricity generation will be requested** during the entire project activity but by the emissions reductions of the biogas destroyed in the generators.

The treated effluent is discharged to the open lagoons where it is aerated as per the design of the original lagoon system. The treated water can be then recycled and sent back to the farm proposals, or used for irrigation by the use of biogas pumps or electrical stationary pumps supplied by the biogas electricity generator farmer. No electricity will be consumed from the grid. The technical parts that will be powered by energy will be supplied by solar cells. The energy will be stored in 12 volts batteries.

The sludge from the digesters will be spread aerobically in the surface of the pasture or plantation as fertiliser in a depth less than 0.30 meters. The sludge will be pumped by a portable biogas pump.

Figure A2. Flowchart of the treatment system



#### A.4.1. Location of the small-scale project activity:

The project is located in Brazil, at Mato Grosso do Sul state.

##### A.4.1.1. Host Party(ies):

The host party for this project activity is Brazil.

##### A.4.1.2. Region/State/Province etc.:

Central region / State of Mato Grosso do Sul.

##### A.4.1.3. City/Town/Community etc:

City of Jateí.

##### A.4.1.4. Details of physical location, including information allowing the unique identification of this small-scale project activity :

The project sites are shown in Figure A3 with specifics detailed in Table A2.

**Table A2. Detailed physical location and identification of project site**

Farm/Site Name	Brascarbon ID	Address	Town/State	Contact	Phone	GPS Coord
Granjas Piaseski	BCA-164MS1-13	Estr. do Barreirinho KM 07	Jateí / MS	Adriano Carlos Piaseski	+55 67 3424 0759	22.5128 S 54.2506 W"
Lote Rural 12	BCA-137MS1-13	Linha Barreirinho – Nascente km 06	Jateí / MS	Nadir Rodrigues de Oliveira	+55 67 9952-4363	22.4489 S 54.3356 W"
Chácara Jateí Lote 45	BCA-203MS1-13	Linha Oculito Km 0 Nascente	Jateí / MS	Felipe Augusto	+55 67 3465-1034	22.5388 S 54.3308 W
Sítio Lote 23 Qda. 27	BCA-202MS1-13	Linha Barreirinho – Nascente Km 15	Jateí / MS	Álvaro Henrique Boing	+55 67 9987-5573	22.5440 S 54.1433 W
Sítio Lote 11 Qda. 24	BCA-204MS1-13	Zona do núcleo colonial de Dourados	Jateí / MS	João Joaquim Felipe	+55 67 9603-0700	22.4840 S 54.3534 W
Sítio Nossa senhora Aparecida	BCA-193MS1-13	Linha Barreirinho - Lote 05 Qda. 29	Jateí / MS	Paulo Ulisses Bacurau	+55 67 3453-3594	22.4617 S 54.3515 W
Sítio Palmeiras - Lote 56	BCA-178MS1-13	Linha Potreirito Lote 56 Quadra 54	Jateí / MS	Célio Aparecido Balasso	+55 67 3631-9985	22.5219 S 54.3124 W
Sítio Lote 54 Qda. 10	BCA-205MS1-13	Linha oculito Km 1,5 Nascente	Jateí / MS	José Pereira da Silva	+55 67 3465-1223	22.5504 S 54.3225 W
Faz. Chapadão	BCA-198MS1-13	Linha barreirinho, Lote 11, Qda. 27	Jateí / MS	Aroldo Henrique	+55 67 9972-5573	22.5393 S 54.1422 W
Sítio Lote 3 Qda. 27	BCA-201MS1-13	Linha Barreirinho	Jateí / MS	Cícera Bento Inacio	+55 67 9985-5243	22.5252 S 54.1709 W
Fazenda Chapadão	BCA-197MS1-13	Linha Barreirinho Lote 29, Qda. 27	Jateí / MS	Andre Henrique	+55 67 9972-5573	22.5393 S 54.1422 W
Sítio Lote 11 Qda. 27	BCA-207MS1-13	Linha Barreirinho Lote 11, Quadra 27	Jateí / MS	Aroldo Henrique	+55 67 9972-5573	22.5331 S 54.1628 W
Sítio São João Lote 07 Qda. 28	BCA-086MS1-13	Linha Barreirão Sítio São João	Jateí / MS	Valdomiro Domingues de Oliveira	+55 67 9952-4363	22.4997 S 54.2597 W

**Adriano Carlos Piaseski has one site in Jateí city:**

- Granjas Piaseski is a farrow-to-finish swine operation. The site uses two primary open lagoons for animal waste storage. Waste from the barns is removed via the pull plug method and then routed to the open lagoon. The methods of effluent disposition used are surface spread and irrigation.

**Nadir Rodrigues de Oliveira has one site in Jateí city:**

- Lote Rural número 12 is a finishing swine operation. The site uses two primary open lagoons for animal waste storage. Waste from the barns is removed via the pull plug method and then routed to the open lagoon. The methods of effluent disposition used are surface spread and irrigation.



**Felipe Augusto has one site in Jateí city:**

- Chácara Jateí Lote Rural 45 is a finishing swine operation. The site uses two primary open lagoons for animal waste storage. Waste from the barns is removed via the pull plug method and then routed to the open lagoon. The methods of effluent disposition used are surface spread and irrigation. Water from this lagoon will be used for irrigation.

**Álvaro Henrique Boing has one site in Jateí city:**

- Sítio Lote 23 Quadra 27 is a breeding and nursery swine operation. The site uses two primary open lagoons for animal waste storage. Waste from the barns is removed via the pull plug method and then routed to the open lagoon. The methods of effluent disposition used are surface spread and irrigation. Water from this lagoon will be used for irrigation.

**João Joaquim Felipe has one site in Jateí city:**

- Sítio Lote 11 Quadra 24 is a finishing swine operation. The site uses two primary open lagoons for animal waste storage. Waste from the barns is removed via the pull plug method and then routed to the open lagoon. The methods of effluent disposition used are surface spread and irrigation.

**Paulo Ulisses Bacurau has one site in Jateí city:**

- Sítio Nossa Senhora Aparecida is a finishing swine operation. The site uses two primary open lagoons for animal waste storage. Waste from the barns is removed via the pull plug method and then routed to the open lagoon. The methods of effluent disposition used are surface spread and irrigation. Water from this lagoon will be used for irrigation.

**Célio Aparecido Balasso has one site in Jateí city:**

- Sítio Palmeiras Lote 56 is a finishing swine operation. The site uses two primary open lagoons for animal waste storage. Waste from the barns is removed via the pull plug method and then routed to the open lagoon. The methods of effluent disposition used are surface spread and irrigation. Water from this lagoon will be used for irrigation.

**José Pereira da Silva has one site in Jateí city:**

- Sítio Lote 54 Quadra 10 is a finishing swine operation. The site uses two primary open lagoons for animal waste storage. Waste from the barns is removed via the pull plug method and then routed to the open lagoon. The methods of effluent disposition used are surface spread and irrigation.

**Aroldo Henrique has two sites in Jateí city:**

- Faz. Chapadão is a finishing swine operation. The site uses two primary open lagoons for animal waste storage. Waste from the barns is removed via the pull plug method and then routed to the open lagoon. The methods of effluent disposition used are surface spread and irrigation.
- Sítio Lote 11 Quadra 27 is a finishing swine operation. The site uses two primary open lagoons for animal waste storage. Waste from the barns is removed via the pull plug method and then routed to the open lagoon. The methods of effluent disposition used are surface spread and irrigation.

**Cícera Bento Inacio has one site in Jateí city:**

- Sítio Lote 03 Quadra 27 is a finishing swine operation. The site uses two primary open lagoons for animal waste storage. Waste from the barns is removed via the pull plug method and then routed to the open lagoon. The methods of effluent disposition used are surface spread and irrigation.

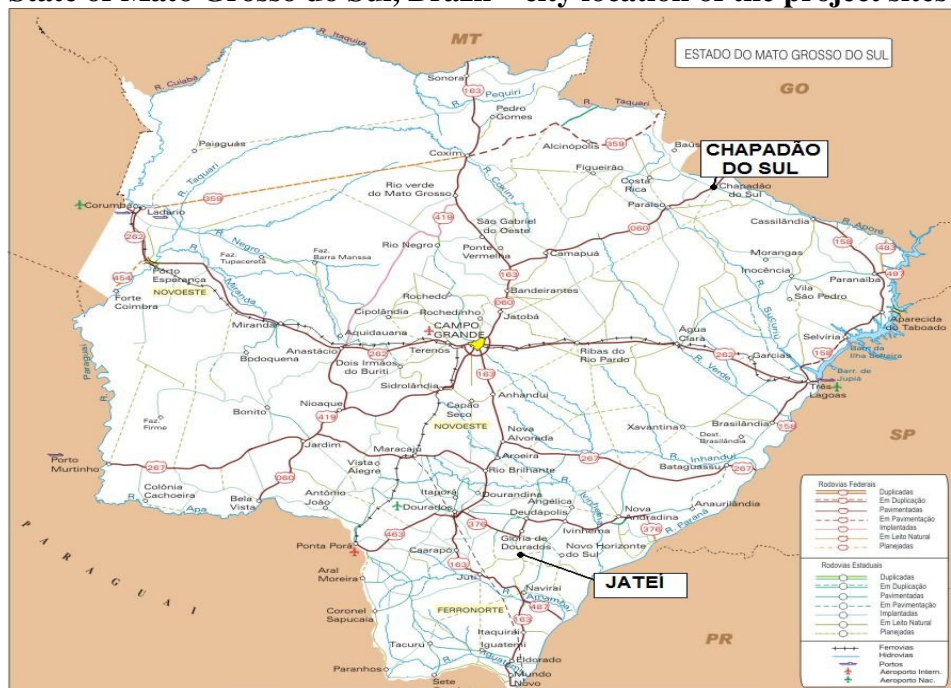
**Andre Henrique has one site in Jateí city:**

- Fazenda Chapadão is a breeding and nursery swine operation. The site uses two primary open lagoons for animal waste storage. Waste from the barns is removed via the pull plug method and then routed to the open lagoon. The methods of effluent disposition used are surface spread and irrigation.

**Valdomiro Domingues de Oliveira has one site in Jateí city:**

- Sítio São João Lote 07 Quadra 28 is a finishing swine operation. The site uses two primary open lagoons for animal waste storage. Waste from the barns is removed via the pull plug method and then routed to the open lagoon. The methods of effluent disposition used are surface spread and irrigation.

**Figure A3 State of Mato Grosso do Sul, Brazil – city location of the project sites**



**A.4.2. Type and category (ies) and technology/measure of the small-scale project activity:**

The project activity is a Type III. The project is a small scale project because it comprises methane recovery from agro-industries, and project emissions are less than 60 kt CO<sub>2</sub>eq.

- Type III.D (reference AMS-III.D) / Version 17 – “*Methane recovery in animal manure management systems*”.

The simplified methodology is appropriate because the project activity site is considered an agro-industry and GHG emissions calculations can be estimated using internationally accepted IPCC 2006 guidance.

The project activity will capture and combust methane gas produced from the decomposing manure at swine confined animal feed operation located in Mato Grosso do Sul state, Brazil. This simplified baseline methodology is applicable to this project activity because without the proposed project activity, methane from the existing animal waste management system would continue to be emitted into the atmosphere.

**A.4.3 Estimated amount of emission reductions over the chosen crediting period:**

THE TOTAL ESTIMATE OF EMISSIONS REDUCTIONS OVER THE 7 YEARS PROJECT PERIOD

**Table A3 – Total estimated reductions per year.**

<b>Years</b>	<b>Annual estimation of emission reductions in tonnes of CO<sub>2</sub>e</b>
2012	55,926
2013	55,926
2014	55,926
2015	55,926
2016	55,926
2017	55,926
2018	55,926
<b>Total estimated reductions (tonnes of CO<sub>2</sub>e)</b>	<b>391,482</b>
<b>Total number of crediting years</b>	<b>7</b>
Annual average over the crediting period of estimated reductions <b>(tonnes of CO<sub>2</sub>e)</b>	<b>55,926</b>

**A.4.4. Public funding of the small-scale project activity:**

There is no public funding in this project.

**A.4.5. Confirmation that the small-scale project activity is not a de-bundled component of a large scale project activity:**

Based on paragraph 2 of Appendix C of the Simplified Modalities and Procedures for Small-Scale CDM project activities<sup>7</sup>, this project is not de-bundled. There are no other registered small-scale CDM project activities with the same project participants, in the same project category and technology/measure, registered within the previous 2 years and whose project boundary is within 1 km of another proposed small-scale activity.

<sup>7</sup> <http://cdm.unfccc.int/Projects/pac/howto/SmallScalePA/sscdebund.pdf>

**SECTION B. Application of a baseline and monitoring methodology**
**B.1. Title and reference of the approved baseline and monitoring methodology applied to the small-scale project activity:**

The approved baseline and monitoring methodology is:

- Type III.D (reference AMS-III.D) / Version 17 – **“Methane recovery in animal manure management systems”**.
- EB 28 Meeting Report – Annex 13 **”Tool to determine project emissions from flaring gases containing methane”**.
- If in the future an electricity generator for in site electricity supply is installed, methodology Type III. H (reference AMS-III.H) / version 16 – **“Methane recovery in wastewater treatment”** will also be applied.

**B.2. Justification of the choice of the project category:**

The simplified methodologies are appropriate because the project activity site is considered an agro-industry and GHG emissions calculations can be estimated using internationally accepted IPCC guidance. The project activity will capture and combust methane gas produced from the decomposing manure at swine Confined Animals Feed Operations located in Mato Grosso do Sul state, Brazil. This simplified baseline methodology is applicable to this project activity because:

**a) The livestock population in the farm is managed under confined conditions:**

All farms included in this project activity are managed under confined conditions confirmed by the obligatory environmental licenses whose document releases the Confined Animals Feed Operation business. The environmental licenses can be found at Brascarbon and it's available for validation and verification.

**b) The manure, after treatment, will not be discharged into natural water resources:**

The environmental legislation does not approve any manure or manure after treatment discharging into the natural water resources. Before releasing the environmental licenses by the Environmental Department, the Confined Animal Feed Operation activity is checked to confirm that all effluent after treatment is not discharged into the natural water resources. According item a) above, the environmental licenses can be found at Brascarbon an available for validation and verification.

**c) The annual average temperature of baseline site where anaerobic manure treatment facility is located is higher than 5°C:**

The annual average temperature verified in city of reference to the Mato Grosso do Sul state is 23-25°C, so higher than what the methodology states as a minimum: 5°C. This information can be verified through on INPE (National Institute of Space Research) web site.

**d) In the baseline scenario the anaerobic lagoons have depths which are at least 1 m:**

The retention time of waste in open anaerobic open lagoons has proven to be more than 1 month as recommended by EMBRAPA (from 30 to 40 days)<sup>8</sup>. The depth was higher than 1 meter, and has been verified by measurements taken on each farm. This information is available for validation and verification.

**e) No methane recovery and destruction by flaring, combustion or gainful use takes place in the baseline scenario;**

The baseline scenario for all farms in this PDD is a Confined Animal Feed Operation with open anaerobic lagoons for the manure treatment system. No methane recovery and destruction by flaring, combustion or gainful use takes place in the baseline scenario, which can be verified in each farm during validation. The project is new and does not involve capacity additions to the baseline scenario. This complies with para 5 and 6 of AMS-III.D version 17.

The project will also satisfy the following conditions:

**a) The residual waste from the animal manure management system shall be handled aerobically, otherwise the related emissions shall be taken into account as per relevant procedures of AMS-III.AO “Methane recovery through controlled anaerobic digestion”. In case of soil application, proper conditions and procedures (not resulting in methane emissions) must be ensured;**

The final sludge will be handled aerobically. It will be applied in the soil, according with the proper conditions and procedures, being assured that no methane emissions are resulting from this application. The project involves the use of treated effluent for irrigation in farms and application of stabilized sludge on crops irrigation in farms, without any anaerobic conditions. The practice is to distribute the sludge over the field according the usual practice to improve the field fertilization. This complies with para 2(a) of AMS-III.D version 17

**b) Technical measures will be used ensuring that all biogas produced by the digester is used or flared:**

The project involves facilities to burn (flaring) the biogas generated by the digester. This complies with para 2(b) of AMS-III.D version 17. An enclosed flare will be used in the project and also sized to support high temperatures. A continuous sparking system is installed in the combustion chamber of the flare. In adequate conditions, the project activity will install electricity generator for in site electricity supply of farm needs according to conditions established on para 3 of AMS-III.H version 16, although no claims for emissions reductions by the electricity generation will be requested during the entire project activity, only by the emissions reductions of the biogas destroyed in the generators. This comply with para 4 of AMS-III.D version 17.

<sup>8</sup> [http://www.cnpsa.embrapa.br/down.php?tipo=publicacoes&cod\\_publicacao=186](http://www.cnpsa.embrapa.br/down.php?tipo=publicacoes&cod_publicacao=186)

- c) **The storage time of the manure after removal from the animal barns, including transportation, will not exceed 45 days before being fed into the anaerobic digester:**

This situation is assured due to the fact that the barns are directly connected to the biodigesters and considering the common farms practices where each day the barn is washed and all waste is removed by the water flushing system sent to the digester. This complies with para 2(c) of AMS-III.D version 17. The Confined Animal Feed Operation Practices follows recommendations from EMBRAPA (Empresa Brasileira de Agricultura e Agropecuária) to get high standards of sanitary conditions in the confined operations. These recommendations can be found at EMBRAPA web site where all producers use as a guideline.

Finally, the project doesn't involve any landfill activity. The project activity recovers methane generated in the treatment of swine manure by installing methane recovery and combustion systems (biodigester). This complies with para 3 of AMS-III.D version 17.

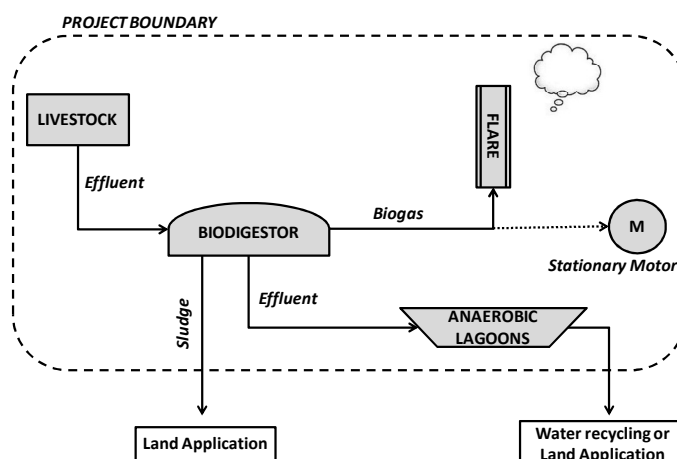
Also, the project is a small scale project because it comprises methane recovery from agro-industries, and project emissions are less than 60 kt CO<sub>2</sub>eq.

The starting date for this activity is expected to be on 15/06/2011 where Brascarbon will sign the construction contract of the sites. The project activity schedule was prepared considering all steps of the project development and construction and it's available for review.

### B.3. Description of the project boundary:

According to version 17 of the AMS-III.D methodology, the project boundary is defined as the physical, geographical site of the livestock, of the manure generation and management systems and of the equipment installed which recover and flare the methane. Thus, the project boundary is defined as the livestock, the biodigester and anaerobic lagoons and the biogas flare system. Figure B1, below, shows the boundary of the project activities schematically: As there is the future possibility to install electricity generator for in site electricity supply, this component is also included (dotted) within the project boundary.

**Figure B1 - Project Boundary**



#### **B.4. Description of baseline and its development:**

This section is based on the equations used on the approved methodology AMS.III.D version 17 and data from 2006 IPCC Guidelines for National GHG Inventories, volume 4, chapter 10.

The amount of methane that would be emitted to the atmosphere in the absence of the project activity can be estimated by referring to the equation B1 – Baseline emissions from manure management, according to the methodology AMS.III.D – version 17.

The final draft of this baseline section was completed on 31/03/2009 (updated as to April 2011 on the investment analysis).. The name of entity determining the baseline is Brascarbon. Brascarbon is a project participant, as well as the project developer.

The baseline for this project activity is defined as the amount of methane that would be emitted to the atmosphere during the crediting period in the absence of the project activity. In this case an open anaerobic lagoon is considered as the baseline and estimated emissions are determined as follows:

##### **Step 1: Animal Population.**

Animal populations for the project activity sites are described in this section (table B2).

##### **Step 2: Baseline Emissions.**

Baseline emissions (BE<sub>y</sub>) are calculated by using one of the following two options:

(a) Using the amount of the waste or raw material that would decay anaerobically in the absence of the project activity, with the most recent IPCC tier 2 approach (please refer to the chapter 'Emissions from Livestock and Manure Management' under the volume 'Agriculture, Forestry and other Land use' of the 2006 IPCC Guidelines for National Greenhouse Gas Inventories). For this calculation, information about the characteristics of the manure and of the management systems in the baseline is required. Manure characteristics include the amount of volatile solids (VS) produced by the livestock and the maximum amount of methane that can be potentially produced from that manure (B<sub>0</sub>);

(b) Using the amount of manure that would decay anaerobically in the absence of the project activity based on direct measurement of the quantity of manure treated together with its specific volatile solids (SVS) content.

**Option a) was chosen.**

##### **Equation B1**

$$BE_y = GWP_{CH_4} * D_{CH_4} * UF_b * \sum MCF_J * B_{0,LT} * N_{LT,y} * VS_{LT,y} * MS\%_{Bl,j}$$

Where:

$BE_y$	Baseline emissions in year “y” (tCO <sub>2</sub> e)
$GWP_{CH_4}$	Global Warming Potential (GWP) of CH <sub>4</sub> (21)
$D_{CH_4}$	CH <sub>4</sub> density (0.00067 t/m <sup>3</sup> at room temperature (20 °C) and 1 atm pressure).
$LT$	Index for all types of livestock
$j$	Index for animal waste management system
$MCF_j$	Annual methane conversion factor (MCF) for the baseline animal waste management system “j”
$B_{0,LT}$	Maximum methane producing potential of the volatile solid generated for animal type “LT” (m <sup>3</sup> CH <sub>4</sub> /kg dm)
$N_{LT,y}$	Annual average number of animals of type “LT” in year “y” (numbers)
$VS_{LT,y}$	Volatile solids for livestock “LT” entering the animal manure management system in year “y” (on a dry matter weight basis, kg dm/animal/year)
$MS\%_{BL,j}$	Fraction of manure handled in baseline animal manure management system “j”
$UF_b$	Model correction factor to account for model uncertainties (0.94) <sub>1</sub>

Where:

**$VS_{LT,y}$  can be determined by scaling default IPCC values to adjust for a site-specific average animal weight.**

#### **Equation B2**

$$VS_{LT,y} = \left( \frac{W_{site}}{W_{default}} \right) * VS_{default} * nd_y$$

Where:

$W_{site}$	Average animal weight of a defined livestock population at the project site (kg)
$W_{default}$	Default average animal weight of a defined population, this data is sourced from IPCC 2006 (kg)
$VS_{default}$	Default value for the volatile solid excretion rate per day on a dry-matter basis for a defined livestock population (kg dm/animal/day)
$nd_y$	Number of days in year “y” where the treatment plant was operational.

And,

**(A)  $N_{LT,y}$  , the annual average number of animals can be determinate as follows:**

#### **Equation B3**

$$N_{LT,y} = N_{da,y} * (N_{p,y}/365)$$

Where:

$N_{da,y}$	Number of days animal is alive in the farm in the year “y” (numbers)
$N_{p,y}$	Number of animals produced annually of type “LT” for the year “y” (numbers)



**Table B1 - Parameters and factors for the applying baseline equations**

Parameter/Factor	Value	Source/Comment
$VS_{\text{default}}$	Annex 3	Obtained from IPCC 2006, vol 4, chapter 10, Tables 10A-7 and 10A-8.
$GWP_{\text{CH}_4}$	21	Intergovernmental Panel on Climate Change, <i>Climate Change 1995: The Science of Climate Change</i> (Cambridge, UK: Cambridge University Press, 1996)
$B_{0,LT}$	0.45	Obtained from 2006 IPCC, Table 10A-7, p.10.80 and Table 10A-8, p.10.81.
$D_{\text{CH}_4}$	0.00067	CH <sub>4</sub> density at room temperature 20°C and 1 atm pressure.
$MCF_J$	79%	Obtained from 2006 IPCC, Chp.10 vol 4 - Table 10.17, p.10.45
$N_{LT,y}$	Table B2	Annual average number of animals of type “LT “ in year “y”(numbers)
$MS\%_{BL,j}$	100%	Fraction of manure handled in system “j”.
$W_{\text{default}}$	198 kg breeding and 50 kg market	Obtained from IPCC2006, vol 4, chapter 10, Tables 10A-7 and 10A-8.
$UF_B$	0.94	Model correction factor to account for model uncertainties.

**Table B2 - Parameters and factors for the specific animal category**

ID	Farm/Site	Animal Category - $N_{LT}$					Total
		Sows	Finishers	Nursery/Weaners	Boars	Gilts	
1	Granjas Piasieski	2,000	13,680	9,457	20	600	25,758
2	Lote Rural 12	-	9,321	-	-	-	9,321
3	Chácara Jateí Lote 45	-	4,660	-	-	-	4,660
4	Sítio Lote 23 Qda. 27	2,260	-	10,688	23	678	13,649
5	Sítio Lote 11 Qda. 24	-	4,660	-	-	-	4,660
6	Sítio Nossa Senhora Aparecida	-	4,660	-	-	-	4,660
7	Sítio Palmeiras - Lote 56	-	4,660	-	-	-	4,660
8	Sítio Lote 54 Qda. 10	-	4,660	-	-	-	4,660
9	Faz. Chapadão	-	4,660	-	-	-	4,660
10	Sítio Lote 3 Qda. 27	-	4,660	-	-	-	4,660
11	Fazenda Chapadão	2,260	-	10,688	23	678	13,649
12	Sítio Lote 11 Qda. 27	-	4,105	-	-	-	4,105
13	Sítio São João Lote 07 Qda. 28	-	4,105	-	-	-	4,105
<b>TOTAL</b>		<b>6,520</b>	<b>63,834</b>	<b>30,833</b>	<b>66</b>	<b>1,956</b>	<b>103,208</b>

**B.5. Description of how the anthropogenic emissions of GHG by sources are reduced below those that would have occurred in the absence of the registered small-scale CDM project activity:**

In the absence of the project activity the methane resulting from the decomposition of animal wastes in the anaerobic lagoons is released into the atmosphere. Proof of an early consideration of CDM is available since:

- In September 2009 the PDD has been published for global stakeholder consultation;
- In March 2010 the Emission Reduction Purchase Agreement (ERPA) was signed between the Project Developer (Brascarbon) and the carbon credit Buyer (Luso Carbon Fund);
- The contracts between the project developer and the owner of the pig farms especially mention the project implementation under the context of CDM.

In absence of this project activity, the swine producers would not change their animal waste management system practices. They have no motivations or financial resources to implement a different waste treatment as open anaerobic lagoons. The swine waste storage and treatment systems in Brazil consists in open tanks, open digesting process and ponds (anaerobic lagoons), due to the most economic and viable system approved to manage the manure in confined animal feed operations. Also, the approved waste treatment used in the farms involves less technology, as open lagoons, and need less employees and technicians for operation and maintenance.

Economic barriers are very common in the confined animals feed operations because producers invest only in the confined feed operations to be more competitive in the market. Financial resources are always used to maintain the confined feed operation working. This is one of the reasons of the additionality of the project activity.

The proposed project activity intends to improve current animal waste management system practices. These changes will result in the mitigation of anthropogenic GHG emissions by controlling the lagoon's decomposition processes and collecting and combusting the biogas. Also the proposed project activity will be sized to accommodate each farm's maximum expected animal capacity.

In accordance with paragraph 28 of the simplified modalities and procedures for small-scale CDM project activities, a simplified baseline and monitoring methodology listed in Appendix B may be used if project participants can demonstrate that the project activity would otherwise not be implemented due to the existence of one or more barrier(s) listed in attachment A of Appendix B. Similarly, for the identified CDM project, following barriers have been overcome during project planning and execution:

**Investment Barrier:**

In the economic point of view, Brazilian pork producers face the same challenges as farmers in other nations due to increased worldwide pork production and low operating margins. Farm owners focus on the production, and odour benefits and water quality enhancements are rarely enough to compel an upgrade to an expensive advanced animal waste management system. Also, in the producer's point of view the animal waste is outside of the production process and has difficult financing challenges that should be considered. Even banks have been unwilling to finance such activities without government guarantees or other incentives. The anaerobic

digester requires a much higher investment than an anaerobic lagoon. Therefore this last one is the most likely alternative and can be considered as the baseline scenario.

To demonstrate the existence of an investment barrier, that prevents the implementation of the project without the revenue of the carbon credits, the project proponent has undertaken an investment analysis of the project activity (without the revenue of the carbon credits), considering three scenarios:

- **I: Baseline Scenario:** the installation of an anaerobic lagoon;
- **II: Project Scenario:** the installation of the anaerobic digester with flare.
- **III: Project Scenario + Generator:** the installation of the anaerobic digester with flare and a generator, which assumes that all the farms will install standard generators with a capacity of 40kW, to produce energy during 12 hours/day and will consume 100% of the energy produced for farm activities proposals. This scenario does not involve any connection to the grid for further energy commercialization. It is considered that the revenues associated with this scenario are the avoided costs with electricity purchase

Although in the initial version of the PDD the investment analysis has been referenced to March 2009, the data has been further updated to take into account the effective date on which the investment decision was made, which was 12<sup>th</sup> of April 2011. The following assumptions were considered (Table B.2.0):

**Table B.2.0 – Assumptions for the Investment Analysis**

Parameter	Assumption / Value	Comments / Source
Date for the Investment Analysis	12 <sup>th</sup> of April 2011	Investment Decision date Approval of the investment by the board of Luso Carbon Fund, the carbon credit buyer which is going to fully finance the project
Period	21 years	Maximum period of the Small Scale project life cycle
Discount rate	11.67	Brazilian Selic Tax for the 12 <sup>th</sup> of April 2011 <a href="http://www.bcb.gov.br/?SELICDIA">http://www.bcb.gov.br/?SELICDIA</a> SELIC Tax is the main index rate used by the Market in Brazil
Exchange rate R\$/USD	1.5870	Exchange rate for 12 <sup>th</sup> of April 2011 <a href="http://www4.bcb.gov.br/pec/taxas/port/ptaxnpsq.asp?id=txcotacao">http://www4.bcb.gov.br/pec/taxas/port/ptaxnpsq.asp?id=txcotacao</a>
Electricity tariff R\$/MWh	209.33	Data for Central Region (Mato Grosso do Sul region) Rural consumption <a href="http://www.aneel.gov.br/">http://www.aneel.gov.br/</a>
Total electricity produced per farm (MWh)	175.2	Assuming farmers will produce energy during 12 hours/day during 365days a year
Investment cost Project Scenario	Variable according to size of farm	According to budget provided by supplier
Maintenance cost Project Scenario	R\$ 8.784	According to budget provided by supplier Does not vary per farm size (equipment replacement + transport costs)
Investment cost Baseline Scenario	Variable according to size of farm	According to budget provided by supplier
Maintenance cost Baseline Scenario	R\$ 1.587	According to budget provided by supplier Does not vary per farm size (equipment replacement + transport costs)
Investment cost Generator 40kW	R\$ 128.560	According to budget provided by supplier

Maintenance cost Generator 40kW	R\$ 10.285	According to budget provided by supplier
------------------------------------	------------	--

The results of the financial analysis for the three scenarios are presented in tables B 2.1, B.2.2. and B.2.3.

In the Baseline scenario (Table B 2.1) and in the Project scenario (Table B.2.2) there are only negatives cash flows, as no revenue will be expected from the implementation of the project activity.

In the Project + Generator scenario, table B 2.3, although the project activity generates positive returns from the avoided costs of the electricity purchase and this is enough to offset the maintenance costs of the anaerobic digester and the generator, the yearly cash-flows are not enough to recover the initial amount which is necessary to investment in the digester plus flare and generator. The NPV of this scenario is still negative, lower than in the baseline scenario.

**Table B.2.1. Financial Analysis for Baseline Scenario (Anaerobic Lagoon) (US\$)**

ID	FARM/SITE	Equipment costs	Installation costs	Other costs (operation, consultancy, engineering, etc.)	Maintenance costs			Revenues from the sale of electricity or other project related products, when applicable			NPV (US\$) (11,67% discount rate)	IRR (%)
					2012	year n	year n+1	2012	year n	year n+1		
1	Granjas Piasiski	-9.191	-17.841	0	-1.000	-1.000	-1.000	0	0	0	-34.659	UNDEFINED
2	Lote Rural 12	-7.777	-15.096	0	-1.000	-1.000	-1.000	0	0	0	-30.500	UNDEFINED
3	Chácara Jateí Lote 45	-7.070	-13.724	0	-1.000	-1.000	-1.000	0	0	0	-28.421	UNDEFINED
4	Sítio Lote 23 Qda. 27	-8.484	-16.469	0	-1.000	-1.000	-1.000	0	0	0	-32.579	UNDEFINED
5	Sítio Lote 11 Qda. 24	-7.070	-13.724	0	-1.000	-1.000	-1.000	0	0	0	-28.421	UNDEFINED
6	Sítio Nossa senhora Aparecida	-7.070	-13.724	0	-1.000	-1.000	-1.000	0	0	0	-28.421	UNDEFINED
7	Sítio Palmeiras - Lote 56	-7.070	-13.724	0	-1.000	-1.000	-1.000	0	0	0	-28.421	UNDEFINED
8	Sítio Lote 54 Qda. 10	-7.070	-13.724	0	-1.000	-1.000	-1.000	0	0	0	-28.421	UNDEFINED
9	Granja Chapadão	-7.070	-13.724	0	-1.000	-1.000	-1.000	0	0	0	-28.421	UNDEFINED
10	Sítio Lote 3 Qda. 27	-7.070	-13.724	0	-1.000	-1.000	-1.000	0	0	0	-28.421	UNDEFINED
11	Fazenda Chapadão	-8.484	-16.469	0	-1.000	-1.000	-1.000	0	0	0	-32.579	UNDEFINED
12	Sítio Lote 11 Qda. 27	-7.070	-13.724	0	-1.000	-1.000	-1.000	0	0	0	-28.421	UNDEFINED
13	Sítio São João Lote 07 Qda. 28	-7.070	-13.724	0	-1.000	-1.000	-1.000	0	0	0	-28.421	UNDEFINED

**Table B.2.2 – Financial Analysis for Project Scenario (digester + flare) (US\$)**

ID	FARM/SITE	Equipment costs	Installation costs	Other costs (operation, consultancy, engineering, etc.)	Maintenance costs			Revenues from electricity savings due the onsite energy production (during 12 hours/day in year)			NPV (US\$) (11,67% discount rate)	IRR (%)
					2012	year n	year n+1	2012	year n	year n+1		
1	Granjas Piasiski	-59.471	-30.636	0	-5.535	-5.535	-5.535	0	0	0	-132.320	UNDEFINED
2	Lote Rural 12	-50.321	-25.923	0	-5.535	-5.535	-5.535	0	0	0	-118.458	UNDEFINED
3	Chácara Jateí Lote 45	-45.747	-23.566	0	-5.535	-5.535	-5.535	0	0	0	-111.527	UNDEFINED
4	Sítio Lote 23 Qda. 27	-54.896	-28.280	0	-5.535	-5.535	-5.535	0	0	0	-125.389	UNDEFINED
5	Sítio Lote 11 Qda. 24	-45.747	-23.566	0	-5.535	-5.535	-5.535	0	0	0	-111.527	UNDEFINED
6	Sítio Nossa senhora Aparecida	-45.747	-23.566	0	-5.535	-5.535	-5.535	0	0	0	-111.527	UNDEFINED
7	Sítio Palmeiras - Lote 56	-45.747	-23.566	0	-5.535	-5.535	-5.535	0	0	0	-111.527	UNDEFINED
8	Sítio Lote 54 Qda. 10	-45.747	-23.566	0	-5.535	-5.535	-5.535	0	0	0	-111.527	UNDEFINED
9	Granja Chapadão	-45.747	-23.566	0	-5.535	-5.535	-5.535	0	0	0	-111.527	UNDEFINED
10	Sítio Lote 3 Qda. 27	-45.747	-23.566	0	-5.535	-5.535	-5.535	0	0	0	-111.527	UNDEFINED
11	Fazenda Chapadão	-54.896	-28.280	0	-5.535	-5.535	-5.535	0	0	0	-125.389	UNDEFINED
12	Sítio Lote 11 Qda. 27	-45.747	-23.566	0	-5.535	-5.535	-5.535	0	0	0	-111.527	UNDEFINED
13	Sítio São João Lote 07 Qda. 28	-45.747	-23.566	0	-5.535	-5.535	-5.535	0	0	0	-111.527	UNDEFINED

**Table B.2.3 – Financial Analysis for Project Scenario + Generator (digester + flare + generator) (US\$)**

ID	FARM/SITE	Equipment costs	Installation costs	Other costs (operation, consultancy, engineering, etc.)	Maintenance costs			Revenues from the sale of electricity or other project related products, when applicable (*)			NPV (US\$) (10,77% discount rate)	IRR (%)
					2012	year n	year n+1	2012	year n	year n+1		
1	Granjas Piaseski	-132.728	-38.387	0	-12.016	-12.016	-12.016	23.109	23.109	23.109	-86.507	UNDEFINED
2	Lote Rural 12	-123.579	-33.674	0	-12.016	-12.016	-12.016	23.109	23.109	23.109	-72.644	UNDEFINED
3	Chácara Jateí Lote 45	-119.004	-31.317	0	-12.016	-12.016	-12.016	23.109	23.109	23.109	-65.713	UNDEFINED
4	Sítio Lote 23 Qda. 27	-128.154	-36.030	0	-12.016	-12.016	-12.016	23.109	23.109	23.109	-79.576	UNDEFINED
5	Sítio Lote 11 Qda. 24	-119.004	-31.317	0	-12.016	-12.016	-12.016	23.109	23.109	23.109	-65.713	UNDEFINED
6	Sítio Nossa senhora Aparecida	-119.004	-31.317	0	-12.016	-12.016	-12.016	23.109	23.109	23.109	-65.713	UNDEFINED
7	Sítio Palmeiras - Lote 56	-119.004	-31.317	0	-12.016	-12.016	-12.016	23.109	23.109	23.109	-65.713	UNDEFINED
8	Sítio Lote 54 Qda. 10	-119.004	-31.317	0	-12.016	-12.016	-12.016	23.109	23.109	23.109	-65.713	UNDEFINED
9	Granja Chapadão	-119.004	-31.317	0	-12.016	-12.016	-12.016	23.109	23.109	23.109	-65.713	UNDEFINED
10	Sítio Lote 3 Qda. 27	-119.004	-31.317	0	-12.016	-12.016	-12.016	23.109	23.109	23.109	-65.713	UNDEFINED
11	Fazenda Chapadão	-128.154	-36.030	0	-12.016	-12.016	-12.016	23.109	23.109	23.109	-79.576	UNDEFINED
12	Sítio Lote 11 Qda. 27	-119.004	-31.317	0	-12.016	-12.016	-12.016	23.109	23.109	23.109	-65.713	UNDEFINED
13	Sítio São João Lote 07 Qda. 28	-119.004	-31.317	0	-12.016	-12.016	-12.016	23.109	23.109	23.109	-65.713	UNDEFINED

In the table B 2.4 the summary of the investment analysis for each farm is presented and it can be seen that the Baseline scenario (anaerobic lagoon) appears as the most attractive option.

**Table B 2.4. NPV Comparison for the three scenarios (US\$)**

ID	FARM/SITE	NPV (1st SCENARIO) Open Lagoon	NPV (2nd SCENARIO) DIGESTER + FLARE	NPV (3rd SCENARIO) DIGESTER + FLARE+GENERATOR
1	Granjas Piasiski	-34.659	-132.320	-86.507
2	Lote Rural 12	-30.500	-118.458	-72.644
3	Chácara Jateí Lote 45	-28.421	-111.527	-65.713
4	Sítio Lote 23 Qda. 27	-32.579	-125.389	-79.576
5	Sítio Lote 11 Qda. 24	-28.421	-111.527	-65.713
6	Sítio Nossa senhora Aparecida	-28.421	-111.527	-65.713
7	Sítio Palmeiras - Lote 56	-28.421	-111.527	-65.713
8	Sítio Lote 54 Qda. 10	-28.421	-111.527	-65.713
9	Granja Chapadão	-28.421	-111.527	-65.713
10	Sítio Lote 3 Qda. 27	-28.421	-111.527	-65.713
11	Fazenda Chapadão	-32.579	-125.389	-79.576
12	Sítio Lote 11 Qda. 27	-28.421	-111.527	-65.713
13	Sítio São João Lote 07 Qda. 28	-28.421	-111.527	-65.713

A sensitivity analysis of the Scenario Project + Generator (only scenario with revenues) was undertaken, considering the variations of 10% as recommended by the Guidelines on the Assessment of Investment Analysis (Annex 58 of the EB 51):

- Alternative A: Investment Cost: decrease in 10%
- Alternative B: Electricity Tariff: increase in 10%

The results are presented in the table B.2.5 and it can be seen that in both alternatives considered, the project is still not viable and the NPV is negative.

**Table B 2.5. Sensitivity analysis summary (US\$)**

ID	FARM/SITE	A - CONSIDERING 10% INVESTMENT COST REDUCTION	B - CONSIDERING 10% INCREASE OF THE ENERGY PRICE
		NPV (3rd SCENARIO) DIGESTER + FLARE + GENERATOR	NPV (3rd SCENARIO) DIGESTER + FLARE + GENERATOR
1	Granjas Piasiski	-69.395	-68.882
2	Lote Rural 12	-56.919	-55.020
3	Chácara Jateí Lote 45	-50.681	-48.088
4	Sítio Lote 23 Qda. 27	-63.157	-61.951
5	Sítio Lote 11 Qda. 24	-50.681	-48.088
6	Sítio Nossa senhora Aparecida	-50.681	-48.088
7	Sítio Palmeiras - Lote 56	-50.681	-48.088
8	Sítio Lote 54 Qda. 10	-50.681	-48.088
9	Granja Chapadão	-50.681	-48.088
10	Sítio Lote 3 Qda. 27	-50.681	-48.088
11	Fazenda Chapadão	-63.157	-61.951
12	Sítio Lote 11 Qda. 27	-50.681	-48.088
13	Sítio São João Lote 07 Qda. 28	-50.681	-48.088



From the 3 Scenarios considered, the installation of the open anaerobic lagoon (baseline scenario) is the most economic option to the swine producers. Both the investment and maintenance cost are inferior to the other scenarios considered and this is an option approved by the environment department. The negative cash flows and present value indicate that the farm producers would not engage and invest in any implementation of anaerobic digester plus flare with or without generator. Continuation of the actual practices, anaerobic lagoon, would be the most attractive course of action because it requires less investment (especially since all the producers already have an anaerobic lagoon under place) and this practice is compliant with the environmental legislation. The installation of an anaerobic lagoon is the option with higher GHG emissions.

**Technological Barrier:**

There is no technology requested for the waste management system, by the environment department, to be implemented in the confined animals feed operations. The actual and approved waste treatment system is open anaerobic lagoons considered also the most economic system to be installed.

The Brascarbon proposal is the installation of the anaerobic digester technology with biogas recovery and destruction.

Anaerobic digester systems must have sized properly to handle the projected animal/effluent volumes with a Hydraulic Retention Time (HRT) consistent with extracting most/all CH<sub>4</sub> from the manure. Variables such as temperature, pressure, methane concentration and density of the biogas have to be determinate or calculated to maintain the lifecycle of the project.

Special equipment such a biogas analyzer, to determine the concentration of the methane in the biogas, has to be acquired to verify the performance of the digester. An enclosed flare has also to be installed to capture and destroy the biogas produced in the digester. Many other instruments such thermo coupling, solar cells, batteries, flow meters, programmable logic controller (to save the temperature information) have also to be installed to perform and control the biogas production.

Also to the adequate operation of the digesters operational procedures have to be followed and managed by an expertise technician. Brascarbon will be responsible for implementing an external support without interfering in the confined animal feed operation because the local animal producers does not have staff available to perform these tasks.

Moreover, operations and maintenance requirements involved with this technology, including a detailed monitoring program to maintain system performance levels, must also be considered. Worldwide, few anaerobic digesters have achieved long-term operations, due primarily to inappropriate operations and maintenance.

The proposed animal waste management system represents the most advanced technology in the farm. The proposed project activity mitigates GHG emissions with associated environmental co-benefits.

**Barrier Due to Prevailing Practice (National Policies and Circumstances)**

According to researchers of Embrapa Swine and Poultry (CNPISA), the common practice regarding swine waste storage and treatment systems in the Brazil consist of open tanks (esterqueiras), open digesting (bioesterqueiras), ponds (anaerobic, variable and aerobic), cesspit, storage or treatment of compost (in solid form). Very few bio-digesters exist. The material is normally distributed by pumps or gravity and applied to crops and pastures.

In order to clarify the actual circumstances regarding to confined animal operations in Brazil and the serious environmental problems that can occur due the bad animal waste management system, EMBRAPA stimulated by the Expansion and Waste Treatment Program of the State of Santa Catarina published a Good Practices Manual with instructions and publications to help the producers and agro-industries to implement projects or systems to control the animal waste management protecting the eco-system<sup>9</sup>. This idea was supported by officers of national swine producers association (ABCS).

Although the installation of an animal waste management system will, by itself, provide the producers with some external benefits as it was stated before, the project itself could not be developed without the revenues from the CERs. CDM funding will help to alleviate the identified barrier by providing the financial means which are necessary to implement the project activity.

**B.6. Emission reductions:****B.6.1. Explanation of methodological choices:**

This section is based on the equations used on the approved methodology AMS.III.D – Version 17 – “*Methane recovery in animal manure management systems*” and data from 2006 IPCC Guidelines for National GHG Inventories, volume 4, chapter 10.

For baseline emissions calculation see section B.4 and all data is summarised in the section B.6.3, Table B.3 and Table B.4.

The project emissions for this project activity are defined as the amount of methane that would be emitted to the atmosphere during the crediting period due to the project activity. In this case an anaerobic digester is considered the project activity and estimated emissions are determined as follows:

**Step 1: Emission Reductions.****Equation B4**

$$ER_{y,estimated} = BE_y - PE_y$$

<sup>9 9</sup> Boas Práticas de Produção de Suínos: [http://www.cnpsa.embrapa.br/sgc/sgc\\_publicacoes/publicacao\\_k5u59t7m.pdf](http://www.cnpsa.embrapa.br/sgc/sgc_publicacoes/publicacao_k5u59t7m.pdf)

Where:

$ER_y$  = emission reductions in t CO<sub>2</sub>e/year  
 $BE_y$  = the annual baseline methane emissions in t CO<sub>2</sub>e/year  
 $PE_y$  = project emissions in t CO<sub>2</sub>e/year

## Step 2: Baseline Emissions.

### According to the Equation B1 section B.4

$$BE_y = GWP_{CH_4} * D_{CH_4} * UF_B * \sum MCF_j * B_{0,LT} * N_{LT,y} * VS_{LT,y} * MS\%_{BL,j}$$

Where:

$BE_y$  Baseline emissions in year “y” (tCO<sub>2</sub>e)  
 $GWP_{CH_4}$  Global Warming Potential (GWP) of CH<sub>4</sub> (21)  
 $D_{CH_4}$  CH<sub>4</sub> density (0.00067 t/m<sup>3</sup> at room temperature (20 °C) and 1 atm pressure).  
 $LT$  Index for all types of livestock  
 $J$  Index for animal waste management system  
 $MCF_j$  Annual methane conversion factor (MCF) for the baseline animal waste management system “j”  
 $B_{0,LT}$  Maximum methane producing potential of the volatile solid generated for animal type “LT” (m<sup>3</sup> CH<sub>4</sub>/kg dm)  
 $N_{LT,y}$  Annual average number of animals of type “LT” in year “y” (numbers)  
 $VS_{LT,y}$  Volatile solids for livestock “LT” entering the animal manure management system in year “y” (on a dry matter weight basis, kg dm/animal/year)  
 $MS\%_{BL,j}$  Fraction of manure handled in baseline animal manure management system “j”  
 $UF_b$  Model correction factor to account for model uncertainties (0.94)

## Step 3: Project Emissions.

According to the simplified baseline and monitoring methodology for a small-scale CDM project Type-III (AMS.III.D – version 17), project emissions consist of:

- Physical leakage of biogas in the manure management systems which includes production, collection and transport of biogas to the point of flaring/combustion or gainful use ( $PE_{PL,y}$ );
- Emissions from flaring or combustion of the gas stream ( $PE_{flare,y}$ );
- CO<sub>2</sub> emissions from use of fossil fuels or electricity for the operation of all the installed facilities ( $PE_{power,y}$ ).
- CO<sub>2</sub> emissions from incremental transportation distances ( $PE_{transp,y}$ )

(e) Emissions from the storage of manure before being fed into the anaerobic digester ( $PE_{storage,y}$ )

**Equation B5**

$$PE_y = PE_{PL,y} + PE_{flare,y} + PE_{power,y} + PE_{transp,y} + PE_{storage,y}$$

Where:

$PE_y$	Project emissions in year “y” (tCO <sub>2</sub> e)
$PE_{PL,y}$	Emissions due to physical leakage of biogas in year “y” (tCO <sub>2</sub> e)
$PE_{flare,y}$	Emissions from flaring or combustion of the biogas stream in the year “y” (tCO <sub>2</sub> e)
$PE_{power,y}$	Emissions from the use of fossil fuel or electricity for the operation of the installed facilities in the year “y” (tCO <sub>2</sub> e)
$PE_{transp,y}$	Emissions from incremental transportation in the year y (tCO <sub>2</sub> e), as per relevant paragraph in AMS-III.F
$PE_{storage,y}$	Emissions from the storage of the manure in the year “y” (tCO <sub>2</sub> e)

Where:

**(A) Emissions due to physical leakage of biogas can be determined as follows:**

**Equation B6**

$$PE_{PL,y} = 0,10 * GWP_{CH_4} * D_{CH_4} * \sum B_{0,LT} * N_{LT,y} * VS_{LT,y} * MS\%_{i,y}$$

Where:

$PE_{PL,y}$	Emissions due to physical leakage of biogas in year “y” (tCO <sub>2</sub> e)
$GWP_{CH_4}$	Global Warming Potential (GWP) of CH <sub>4</sub> (21)
$D_{CH_4}$	CH <sub>4</sub> density (0.00067 t/m <sup>3</sup> at room temperature (20 °C) and 1 atm pressure).
$LT$	Index for all types of livestock
$J$	Index for animal waste management system
$B_{0,LT}$	Maximum methane producing potential of the volatile solid generated for animal type “LT” (m <sup>3</sup> CH <sub>4</sub> /kg dm)
$N_{LT,y}$	Annual average number of animals of type “LT” in year “y” (numbers)
$VS_{LT,y}$	Volatile solids for livestock “LT” entering the animal manure management system in year “y” (on a dry matter weight basis, kg dm/animal/year)
$MS\%_{i,y}$	Fraction of manure handled in system “i” in year “y”

**(B) Emissions from flaring determinate as follows:**

**Equation B7**

$$PE_{flare,y} = \sum_{h=1}^{8760} TM_{flare,y} * (1 - \eta_{flare,h}) * GWP_{CH4} / 1000$$

Where:

$PE_{flare,y}$	Project emissions from flaring of the residual gas stream in year y, tCO <sub>2</sub> e
$TM_{RG,h}$	Mass flow rate of methane in the residual gas in the hour h, kg/h
$\eta_{flare,h}$	Flare efficiency in hour h
$GWP_{CH4}$	Global Warming Potential of methane valid for the commitment period, tCO <sub>2</sub> e/tCH <sub>4</sub>
$\eta_{flare,h}$	Flare efficiency in the hour h

**(C) Emissions from use of fossil fuels or electricity for the operation:**

No fossil fuel or electricity will be used in the project, therefore,  $PE_{power,y} = \text{zero}$ .

**(D) Emissions from incremental transportation**

No incremental transportation will occur in the project activity, and therefore,  $PE_{transp,y} = 0$

**(E) Emissions from storage of the manure:**

The manure will not be stored in the entire project. Each day all the manure is washed and sent to the digester, therefore,  $PE_{storage,y} = 0$ .

**Step 4: Leakage.**

According to the simplified baseline and monitoring methodology AMS.III.D / version 17, no leakage calculation is required.

**B.6.2. Data and parameters that are available at validation:**

Data / Parameter:	MCF <sub>j</sub>
Data unit:	%
Description:	Annual methane conversion factor for the baseline animal waste management system “j”.
Source of data used:	Obtained from IPCC2006, vol 4, chapter 10, Tables 10.17.
Value applied:	79%
Justification of the choice of data or description of measurement methods and procedures actually applied :	Average temperature of central region, mainly where the project sites are located is 23 to 25 Celsius during the year, according to CPTEC/INPE/EMBRAPA and INMET <a href="http://bancodedados.cptec.inpe.br">http://bancodedados.cptec.inpe.br</a> <a href="http://www.inmet.gov.br/html/clima.php">http://www.inmet.gov.br/html/clima.php</a>
Any comment:	

Data / Parameter:	MS% <sub>Bl,j</sub>
Data unit:	Fraction
Description:	Fraction of manure handled in baseline animal manure management system “j”.
Source of data used:	Project proponents
Value applied:	1
Justification of the choice of data or description of measurement methods and procedures actually applied :	100% of the manure will be handled per category T, system S and climate region k.
Any comment:	

Data / Parameter:	VS <sub>default</sub>
Data unit:	kg dry matter/animal/day
Description:	Default value for the volatile solid excretion rate per day on a dry-matter basis for a defined livestock population
Source of data used:	Obtained from IPCC2006, vol 4, chapter 10, Tables 10A-7 and 10A-8.
Value applied:	0.3 for Market Swine (finishers, nursery/weaners, boars) 0.46 for Breeding Swine (gilts, sows)
Justification of the choice of data or description of measurement methods and procedures actually applied :	Genetics and nutrition adopted for these farms as so as in western Europe. More details or information of the genetics can be obtained at the producers or at the Associação Brasileira dos Criadores de Suínos (Brazilian Swine Association). <a href="http://www.abcs.org.br/">http://www.abcs.org.br/</a> The genetic source of production operation is originated from Annex I; The farm uses formulated feed rations optimized for the various stage of growth and animals category; The formulated feed rations can be validated through on farm record keeping. Used of factors as defined in IPCC2006, chapter 10, volume 4, since that there is no national data for gross energy calculation.
Any comment:	

**PROJECT DESIGN DOCUMENT FORM (CDM-SSC-PDD) - Version 03**

CDM – Executive Board

Page 31

Data / Parameter:	<b>GWPC<sub>H4</sub></b>
Data unit:	tCO <sub>2</sub> e/tCH <sub>4</sub>
Description:	Global warming potential of CH <sub>4</sub>
Source of data used:	IPCC 2006
Value applied:	21
Justification of the choice of data or description of measurement methods and procedures actually applied :	Conversion factor for metric tones of CH <sub>4</sub> to metric tones of CO <sub>2</sub> equivalent.
Any comment:	

Data / Parameter:	<b>B<sub>0,LT</sub></b>
Data unit:	m <sup>3</sup> CH <sub>4</sub> /kg dm
Description:	Maximum methane producing potential of the volatile solid generated for animal type “LT”.
Source of data used:	IPCC 2006, Tables 10-A7 and 10-A8.
Value applied:	Sows(breeding swine more than 200 kg mass): 0.45 Finishers(market swine more than 50 Kg mass): 0.45 Nursery: 0.45 Boars and Gilts (market swine more than 100 Kg mass): 0.45
Justification of the choice of data or description of measurement methods and procedures actually applied :	Default value according to IPCC 2006 in western Europe region. Genetics and nutrition adopted for these farms as so as in western Europe. More details or information of the genetics can be obtained at the producers or at the Associação Brasileira dos Criadores de Suínos (Brazilian Swine Association). <a href="http://www.abcs.org.br/">http://www.abcs.org.br/</a> The genetic source of production operation is originated from Annex I; The farm uses formulated feed rations optimized for the various stage of growth and animals category; The formulated feed ratings can be validated through on farm record keeping.
Any comment:	

**PROJECT DESIGN DOCUMENT FORM (CDM-SSC-PDD) - Version 03**

CDM – Executive Board

Page 32

Data / Parameter:	W <sub>default</sub>
Data unit:	Kg
Description:	Default average animal weight of a defined population at the project site.
Source of data:	IPCC 2006, Tables 10-A7 and 10-A8.
Value applied:	Sows(breeding swine): 198 kg Finishers(market swine): 50 kg Nursery (market swine): 50 kg Boars (market swine): 50 kg Gilts (breeding swine): 198 kg
Justification of the choice of data or description of measurement methods and procedures actually applied :	Default value according to IPCC 2006 in western Europe region. Genetics and nutrition adopted for these farms as so as in Western Europe. More details or information of the genetics can be obtained at the producers or at the Associação Brasileira dos Criadores de Suínos (Brazilian Swine Association). <a href="http://www.abcs.org.br/">http://www.abcs.org.br/</a>
Any comment:	

Data / Parameter:	UF <sub>b</sub>
Data unit:	Fraction
Description:	Model correction factor to account for model uncertainties
Source of data:	FCCC/SBSTA/2003/10/Add.2, page 25.
Value applied:	0.94
Justification of the choice of data or description of measurement methods and procedures actually applied :	Default value according to methodology AMS-III.D
Any comment:	



### B.6.3. Ex-ante calculation of emission reductions:

(i) According to the baseline description in the section B.4, the results from the equations are summarized in the following table B3:

**Table B3 – Baseline emissions for the first year – 2012**

ID	Farm/Site	Baseline Emissions per Annual Average Number of Animals Type "LT", in t CO2e/year					Total
		Sows	Finishers	Nursery/Weaners	Boars	Gilts	
1	Granjas Piaseski	1,754	12,678	1,948	49	526	16,955
2	Lote Rural 12	-	8,638	-	-	-	8,638
3	Chácara Jateí Lote 45	-	4,319	-	-	-	4,319
4	Sítio Lote 23 Qda. 27	1,982	-	2,201	57	595	4,835
5	Sítio Lote 11 Qda. 24	-	4,319	-	-	-	4,319
6	Sítio Nossa senhora Aparecida	-	4,319	-	-	-	4,319
7	Sítio Palmeiras - Lote 56	-	4,319	-	-	-	4,319
8	Sítio Lote 54 Qda. 10	-	4,319	-	-	-	4,319
9	Faz. Chapadão	-	4,319	-	-	-	4,319
10	Sítio Lote 3 Qda. 27	-	4,319	-	-	-	4,319
11	Fazenda Chapadão	1,982	-	2,201	57	568	4,808
12	Sítio Lote 11 Qda. 27	-	3,805	-	-	-	3,805
13	Sítio São João Lote 07 Qda. 28	-	3,805	-	-	-	3,805
TOTAL		5,718	59,159	6,350	163	1,689	73,079

**Table B4 – Total baseline emission per year**[illegible]

**(ii) According to the project emissions description in the section B.6 and equation B5:**

**Table B5 – Total project activity emissions for the first year – 2012**

ID	Farm/Site	Project Emissions per Annual Average Number of Animals Type "LT", in t CO2e/year					Total
		Sows	Finishers	Nursery/Weaners	Boars	Gilts	
1	Granjas Piaseski	411	2,975	457	12	124	3,979
2	Lote Rural 12	-	2,027	-	-	-	2,027
3	Chácara Jateí Lote 45	-	1,014	-	-	-	1,014
4	Sítio Lote 23 Qda. 27	465	-	516	14	140	1,135
5	Sítio Lote 11 Qda. 24	-	1,014	-	-	-	1,014
6	Sítio Nossa senhora Aparecida	-	1,014	-	-	-	1,014
7	Sítio Palmeiras - Lote 56	-	1,014	-	-	-	1,014
8	Sítio Lote 54 Qda. 10	-	1,014	-	-	-	1,014
9	Faz. Chapadão	-	1,014	-	-	-	1,014
10	Sítio Lote 3 Qda. 27	-	1,014	-	-	-	1,014
11	Fazenda Chapadão	465	-	516	14	133	1,128
12	Sítio Lote 11 Qda. 27	-	893	-	-	-	893
13	Sítio São João Lote 07 Qda. 28	-	893	-	-	-	893
TOTAL		1,341	13,886	1,489	40	397	17,153

**Table B6 – Total project activity emissions per year**

ID	Farm Name/Site	Project Activity Emissions in t CO2e / year							
		2012	2013	2014	2015	2016	2017	2018	Total
1	Granjas Piaseski	3,979	3,979	3,979	3,979	3,979	3,979	3,979	27,853
2	Lote Rural 12	2,027	2,027	2,027	2,027	2,027	2,027	2,027	14,189
3	Chácara Jateí Lote 45	1,014	1,014	1,014	1,014	1,014	1,014	1,014	7,098
4	Sítio Lote 23 Qda. 27	1,135	1,135	1,135	1,135	1,135	1,135	1,135	7,945
5	Sítio Lote 11 Qda. 24	1,014	1,014	1,014	1,014	1,014	1,014	1,014	7,098
6	Sítio Nsa Senhora Aparecida	1,014	1,014	1,014	1,014	1,014	1,014	1,014	7,098
7	Sítio Palmeiras - Lote 56	1,014	1,014	1,014	1,014	1,014	1,014	1,014	7,098
8	Sítio Lote 54 Qda. 10	1,014	1,014	1,014	1,014	1,014	1,014	1,014	7,098
9	Faz. Chapadão	1,014	1,014	1,014	1,014	1,014	1,014	1,014	7,098
10	Sítio Lote 3 Qda. 27	1,014	1,014	1,014	1,014	1,014	1,014	1,014	7,098
11	Fazenda Chapadão	1,128	1,128	1,128	1,128	1,128	1,128	1,128	7,896
12	Sítio Lote 11 Qda. 27	893	893	893	893	893	893	893	6,251
13	Sítio São João Lote 07 Qda. 28	893	893	893	893	893	893	893	6,251
Total project activity emissions per year		17,153	17,153	17,153	17,153	17,153	17,153	17,153	120,071
Total project activity emissions in 7 years, in t CO2e/year =									

(iii) According to the project emissions reduction in the section B.6, the results of the estimation of the emissions reduction, equation B4 are summarized in the following table B7:

**Table B7 – Total Emission Reductions**

Description	Year						
	2012	2013	2014	2015	2016	2017	2018
Total Baseline Emissions - BE <sub>y</sub> , in ton CO <sub>2</sub> e/year	73,079	73,079	73,079	73,079	73,079	73,079	73,079
Total Project Emissions - PE <sub>y</sub> , in ton CO <sub>2</sub> e/year	17,153	17,153	17,153	17,153	17,153	17,153	17,153
Total Emission Reductions - ER <sub>y</sub> = BE <sub>y</sub> – PE <sub>y</sub> (in ton CO <sub>2</sub> e/year)	55,926	55,926	55,926	55,926	55,926	55,926	55,926

**B.6.4. Summary of the ex-ante estimation of emission reductions:**

**Table B8 – Summary of the Total Ex-ante Emissions Reductions**

Year	Estimation of project activity emissions (tCO <sub>2</sub> e)	Estimation of baseline emissions (tCO <sub>2</sub> e)	Estimation of leakage (tCO <sub>2</sub> e)	Estimation of overall emission reductions (tCO <sub>2</sub> e)
2012	17,153	73,079	0	55,926
2013	17,153	73,079	0	55,926
2014	17,153	73,079	0	55,926
2015	17,153	73,079	0	55,926
2016	17,153	73,079	0	55,926
2017	17,153	73,079	0	55,926
2018	17,153	73,079	0	55,926
<b>Total (ton de CO<sub>2</sub> e)</b>	<b>120,071</b>	<b>511,553</b>	<b>0</b>	<b>391,482</b>

**B.7. Application of a monitoring methodology and description of the monitoring plan:**

The methodology applied to this project activity is AMS-III.D./version 17, *Methane recovery in animal manure management systems*. If in the future an electricity generator for in site electricity supply is installed, methodology AMS-III.H /version 16, *Methane recovery in wastewater treatment*, will also be applied. The simplified monitoring methodologies are applicable to this project activity because they provide a method to accurately measure and record the GHG emissions that will be captured and combusted by the project activity.

Each individual farm will be monitored independently according with the parameters described in the following section B.7.1 and monitored according with the monitoring plan described in the section B.7.2.

All data monitored and required for verification and issuance is kept for a minimum of two years after the end of the crediting period or the last issuance of CERs for this project activity,

whichever occurs later. All parameters are deeply controlled by operational procedures developed by Brascarbon. A list and the procedures contained in the Brascarbon Operational Procedures Manual are mentioned in the PDD in the Annex 4.

Brascarbon trained several regional technicians who will be responsible for the maintenance and the monitoring system based in ISO 9000 (Brascarbon Operational Procedure Manual). Details of the monitoring system can be found in the section B.7.2.

**B.7.1. Data and parameters monitored:**

Data / Parameter:	T <sub>f</sub>
Data unit:	°C
Description:	Combustion temperature of the flare
Source of data:	Brascarbon Monitoring Report System
Value of data:	n.a.
Measurement procedures (if any):	According to the Monitoring Operational Procedure POP-01
Monitoring frequency	Every 1 minute measurement and registration by a Control Logic Program (CLP)
QA/QC procedures	Check the data for more accurate information.
Any comment:	Monitoring operational procedure POP-01 can be found at the Brascarbon Operational Procedure Manual

Data / Parameter:	W <sub>site</sub>
Data unit:	Kg
Description:	Average animal weight of a defined livestock population at the project site in year
Source of data:	Brascarbon Monitoring Report System
Value of data:	Sows: 220 kg Finishers: 90 kg Nursery: 20 kg Boars: 240 kg Gilts: 220 kg
Measurement procedures (if any):	Checking data and records in the confined feed animal operation
Monitoring frequency	Quarterly
QA/QC procedures	Check of the site records and documents,
Any comment:	Monitoring operational procedure POP-016

**PROJECT DESIGN DOCUMENT FORM (CDM-SSC-PDD) - Version 03**

CDM – Executive Board

Page 37

Data / Parameter:	SITE INSPECTION
Data unit:	n.a.
Description:	Inspection on the site considering relevant regulation and the infrastructure of the site
Source of data:	Brascarbon Monitoring Report System
Value of data:	n.a.
Measurement procedures (if any):	Annual follow-up of the documentation to check the expiration date, changes in the production lay-out and surroundings of the digester. Use of the annex attached at the operational procedure POP-02
Monitoring frequency	Annually
QA/QC procedures	Check of the confined animal production official documents
Any comment:	Monitoring operational procedure POP-02 can be found at the Brascarbon Operational Procedure Manual

Data / Parameter:	$N_{LT,y}$
Data unit:	Number
Description:	Annual average number of animals of type “LT” in year “y”
Source of data:	Brascarbon Monitoring Report System
Value of data:	See table B.2 in Section B.4
Measurement procedures (if any):	Checking of the documentation located at the confined animal production and use of the table annexed at the operational procedure POP-03. Use of the Equation B3 established in the section B4 step 2 item B – determination of the annual average number of animals.
Monitoring frequency	Monthly
QA/QC procedures	Check of the site records and documents.
Any comment:	Monitoring operational procedure POP-03 can be found at the Brascarbon Operational Procedure Manual

Data / Parameter:	$BG_{burnt,y}$
Data unit:	$m^3$
Description:	Biogas flared or used as a fuel in the year y.
Source of data:	Brascarbon Monitoring Report System
Value of data:	n.a.
Measurement procedures (if any):	Recover the data registered in the data logger (CLP) of the volume in the local control panel according to the operational procedure POP-04
Monitoring frequency	Monthly
QA/QC procedures	Check the registers sent from the field. Control and assure the calibration program of the flow meter.
Any comment:	Monitoring operational procedure POP-04 can be found at the Brascarbon Operational Procedure Manual

**PROJECT DESIGN DOCUMENT FORM (CDM-SSC-PDD) - Version 03**

CDM – Executive Board

Page 38

Data / Parameter:	$W_{CH_4,y}$
Data unit:	Fraction
Description:	Methane content in biogas in the year “y”
Source of data:	Brascarbon Monitoring Report System
Value of data:	n.a.
Measurement procedures (if any):	Use of methane concentration analysis instrument on dry basis in the sampling point at piping to the flare.
Monitoring frequency	Periodical. To assure that the monitoring frequency provides a 95% confidence level, the adequate frequency will be determined through a statistical analysis of the methane fraction variation, based on methane fraction data gathered on a group of farms per region during a certain period time.
QA/QC procedures	Check the registers in the generated documents. Control and assure the calibration program of the instrument.
Any comment:	Monitoring operational procedure POP-05 can be found at the Brascarbon Operational Procedure Manual

Data / Parameter:	$T_{biogas}$
Data unit:	°C
Description:	Temperature of the biogas at operation conditions
Source of data:	Brascarbon Monitoring Report System
Value of data:	20 °C
Measurement procedures (if any):	Measurement with a local thermometer. Measurement according Operational Procedure POP-06
Monitoring frequency	Monthly
QA/QC procedures	Check the registers in the generated documents and thermometer calibration
Any comment:	Monitoring operational procedure POP-06 can be found at the Brascarbon Operational Procedure Manual

Data / Parameter:	$D_{CH_4,y}$
Data unit:	tones / m <sup>3</sup>
Description:	Density of the methane combusted at operation conditions
Source of data:	Brascarbon Monitoring Report System
Value of data:	0.00067
Measurement procedures (if any):	Calculation according to the Operational Procedure POP-07. Use of the formula considering pressure, temperature and molecular mass of methane
Monitoring frequency	Monthly
QA/QC procedures	Check and approve the density value calculation.
Any comment:	Monitoring operational procedure POP-07 can be found at the Brascarbon Operational Procedure Manual. Reference: Annex 13-Tool to determine project emissions from flaring gases containing methane.

**PROJECT DESIGN DOCUMENT FORM (CDM-SSC-PDD) - Version 03**

CDM – Executive Board

Page 39

Data / Parameter:	$Q_{DM}$
Data unit:	n.a.
Description:	Sludge soil application
Source of data:	Brascarbon Monitoring Report System
Value of data:	n.a.
Measurement procedures (if any):	Supervision in the field
Monitoring frequency	Defined according to the digester performance
QA/QC procedures	Check the registers in the generated documents.
Any comment:	Monitoring operational procedure POP-09 can be found at the Brascarbon Operational Procedure Manual

Data / Parameter:	FE or $\eta_{flare, h}$
Data unit:	%
Description:	Flare Efficiency
Source of data:	Brascarbon Monitoring Report System
Value of data:	If exhaust gas hourly temperature $\geq 500^{\circ}\text{C}$ than 90% efficiency If exhaust gas hourly temperature $< 500^{\circ}\text{C}$ than 0% efficiency
Measurement procedures (if any):	Enclosed flare. The temperature measurement and it's registration in the programmable logic controller system (PLC) is every minute. Brascarbon considers efficiency 90% for the hour with all temperature measurements above or equal to $500^{\circ}\text{C}$ and 0% efficiency for the hour with any temperature measurements below $500^{\circ}\text{C}$
Monitoring frequency	Monthly
QA/QC procedures	Check the registers in the generated documents.
Any comment:	<p>Every minute monitoring of the flare temperature. The efficiency calculation is monthly and according to Monitoring Operational Procedure POP-08 which can be found at the Brascarbon Operational Procedure Manual.</p> <p>According to the manufacture specifications of the enclosed flares the dimension, the combustor, the mixer, the refractory and the continuous sparking system of the enclosed flares were established according to the maximum theoretical flow of biogas for each swine farm. Hence, only the temperature of the enclosed flare must be monitored to ensure adequate combustion of biogas in the flare.</p>

**PROJECT DESIGN DOCUMENT FORM (CDM-SSC-PDD) - Version 03**

CDM – Executive Board

Page 40

<b>Data / Parameter:</b>	ER <sub>y,ex-post</sub>
<b>Data unit:</b>	Ton CO <sub>2</sub> e
<b>Description:</b>	Ex-post emission reductions achieved by the project activity based on monitored values for the year “y”.
<b>Source of data:</b>	Brascarbon Monitoring Report System
<b>Value of data:</b>	n.a.
<b>Measurement procedures (if any):</b>	Comparison of the baseline with the actual measured data according to the operational procedure POP-17
<b>Monitoring frequency</b>	Yearly
<b>QA/QC procedures</b>	Check the ER calculation and the registers in the generated documents.
<b>Any comment:</b>	Used to cap the maximal emission reduction in any year. Monitoring Operational Procedure POP-17 can be found at the Brascarbon Operational Procedure Manual

<b>Data / Parameter:</b>	FFR
<b>Data unit:</b>	n.a.
<b>Description:</b>	Formulated Feed Rations
<b>Source of data:</b>	Brascarbon Monitoring Report System
<b>Value of data:</b>	n.a.
<b>Measurement procedures (if any):</b>	According to the Operational Procedure POP-14
<b>Monitoring frequency</b>	Monthly
<b>QA/QC procedures</b>	Check the registers and/or food purchases records on the farm.
<b>Any comment:</b>	Monitoring operational procedure POP-14 can be found at the Brascarbon Operational Procedure Manual

<b>Data / Parameter:</b>	P biogas
<b>Data unit:</b>	mbar
<b>Description:</b>	Pressure of the biogas at operation conditions
<b>Source of data:</b>	Brascarbon Monitoring Report System
<b>Value of data:</b>	1013,25 mbar (or 1 atm)
<b>Measurement procedures (if any):</b>	Measurement with portable local pressure gauge. Measurement according Operational Procedure POP-13
<b>Monitoring frequency</b>	Monthly
<b>QA/QC procedures</b>	Check the registers in the generated documents and equipment for measurement calibration
<b>Any comment:</b>	Monitoring operational procedure POP-13 can be found at the Brascarbon Operational Procedure Manual



**PROJECT DESIGN DOCUMENT FORM (CDM-SSC-PDD) - Version 03**

CDM – Executive Board

Page 41

Data / Parameter:	GENETIC SOURCE
Data unit:	n.a.
Description:	Genetic source from annex I party
Source of data:	Brascarbon Monitoring Report System
Value of data:	Western Europe
Measurement procedures (if any):	Data and records from the confined feed animal operation. According Operational Procedure POP-15
Monitoring frequency	Annually
QA/QC procedures	Check data and records from the farm operation
Any comment:	Monitoring operational procedure POP-15 can be found at the Brascarbon Operational Procedure Manual

Data / Parameter:	MS% i,y
Data unit:	Fraction
Description:	Fraction of manure handled in project emissions in system “i”, year “y”.
Source of data:	Brascarbon Monitoring Report System
Value of data:	1
Measurement procedures (if any):	During the site inspection, checking if changes in the adopted waste management system and surroundings of the digester was modified from the original proposal project activity. Use of the annex attached at the operational procedure POP-02
Monitoring frequency	Annually
QA/QC procedures	Check of the confined animal production official documents
Any comment:	Monitoring operational procedure POP-02 can be found at the Brascarbon Operational Procedure Manual

Data / Parameter:	FV <sub>RG,h</sub>
Data unit:	m <sup>3</sup> /h
Description:	Volumetric flow rate of the residual gas in dry basis at normal conditions in hour h
Source of data:	Brascarbon Monitoring Report System
Value of data:	n.a.
Measurement procedures (if any):	Recover the data registered in the data logger (CLP) of the volume in the local control panel and calculate flow rate according to the operational procedure POP-04
Monitoring frequency	Monthly
QA/QC procedures	Check the registers sent from the field. Control and assure the calibration program of the flow meter.
Any comment:	Monitoring operational procedure POP-04 can be found at the Brascarbon Operational Procedure Manual

**PROJECT DESIGN DOCUMENT FORM (CDM-SSC-PDD) - Version 03**

CDM – Executive Board

Page 42

Data / Parameter:	TM <sub>RG,h</sub>
Data unit:	Kg/h
Description:	Mass flow rate of methane in the residual gas in the hour h
Source of data:	Brascarbon Monitoring Report System
Value of data:	n.a.
Measurement procedures (if any):	To be calculated according to the “Tool to determine project emissions from flaring gases containing methane”. An operational procedure POP 17 includes the instruction to the calculation.
Monitoring frequency	Monthly
QA/QC procedures	Check the registers sent from the field. Calculation of the parameter according to the procedures mentioned above.
Any comment:	Monitoring operational procedure POP-17 can be found at the Brascarbon Operational Procedure Manual

Data / Parameter:	fv <sub>CH<sub>4</sub>,RG</sub>
Data unit:	Fraction
Description:	Volumetric fraction of methane content in the residual gas on dry basis measured as 95% confidence level
Source of data:	Brascarbon Monitoring Report System
Value of data:	n.a.
Measurement procedures (if any):	Use of methane concentration analysis instrument on dry basis in the sampling point at piping to the flare.
Monitoring frequency	Periodical. To assure that the monitoring frequency provides a 95% confidence level, the adequate frequency will be determined through a statistical analysis of the methane fraction variation, based on methane fraction data gathered on a group of farms per region during a certain period time.
QA/QC procedures	Check the registers in the generated documents. Control and assure the calibration program of the instrument.
Any comment:	Monitoring operational procedure POP-05 can be found at the Brascarbon Operational Procedure Manual

**PROJECT DESIGN DOCUMENT FORM (CDM-SSC-PDD) - Version 03**

CDM – Executive Board

Page 43

Data / Parameter:	$N_{day,y}$
Data unit:	Number
Description:	Number of days animal is alive in the farm, in year “y”
Source of data:	Brascarbon Monitoring Report System
Value of data:	Sows 365 Finishers 90 Nursery/Weaners 70 Boars 365 Gilts 365
Measurement procedures (if any):	Checking of the documentation located at the confined animal production and use of the operational procedure POP-03
Monitoring frequency	Monthly
QA/QC procedures	Check of the site records and documents.
Any comment:	Monitoring operational procedure POP-03 can be found at the Brascarbon Operational Procedure Manual

Data / Parameter:	$N_{p,y}$
Data unit:	Number
Description:	Number of animals produced annually of type “LT” in year “y”
Source of data:	Brascarbon Monitoring Report System
Value of data:	Animal production data (see Annex 3)
Measurement procedures (if any):	Checking of the documentation located at the confined animal production and use of the table annexed at the operational procedure POP-03
Monitoring frequency	Monthly
QA/QC procedures	Check of the site records and documents.
Any comment:	Monitoring operational procedure POP-03 can be found at the Brascarbon Operational Procedure Manual

Data / Parameter:	$nd_y$
Data unit:	Number
Description:	Number of days in year “y” where the treatment plant was operational
Source of data:	Brascarbon Monitoring Report System
Value of data:	365
Measurement procedures (if any):	According to the operational procedure POP-24
Monitoring frequency	Annually
QA/QC procedures	Check the data for more accurate information.
Any comment:	Monitoring operational procedure POP-24 can be found at the Brascarbon Operational Procedure Manual

**B.7.2. Description of the monitoring plan:**

The following table, Table B9, presents the monitoring plan followed by Brascarbon in order to achieve certified emissions reductions, after each validation and verification process. Other information of monitoring plan and system can be found in the Annex 4.

**Table B9 – Monitoring Plan**

ID	DATA	Data Type	Data Unit	Data Variable	Frequency	Measured(m) Calculated(c) Estimated(e) Documented(d)	Proportion of the data to be monitored	How will the data be archived?	For how long is archived data to be kept?	Comment
1	T f	Temp	°C	Flare Temperature	Every 1 minute	M	100%	electronic	Until end of CP + 2 years	Use for flare efficiency
2	Site Inspection	Document	----	----	Annually	D	100%	electronic	Until end of CP + 2 years	General Site Inspection
3	N <sub>LT,y</sub>	Number	-	Nr, Of heads	Monthly	C	100%	electronic	Until end of CP + 2 years	Used to quantify the methane generation potential
4	BG <sub>burnt,y</sub>	Volume	m <sup>3</sup>	Biogas produced	Monthly	M	100%	electronic	Until end of CP + 2 years	Cumulative biogas production
5	w <sub>CH4,y</sub>	Fraction	%	Methane content	TBD(*)	M	100%	electronic	Until end of CP + 2 years	Concentration in wet basis
6	T <sub>biogas</sub>	Temp	°C	Biogas Temperature	Monthly	M	100%	electronic	Until end of CP + 2 years	Use to biogas density calculation
7	D <sub>CH4</sub>	Mass	Ton/ <sup>3</sup>	Density	Monthly	C	100%	electronic	Until end of CP + 2 years	Density
8	FE	Efficiency	%	Temperature	Monthly	C	100%	electronic	Until end of CP + 2 years	Efficiency determinate by the burning temp.
9	QDM	Supervision	--	---	Every Batch Disposed	E	100%	electronic	Until end of CP + 2 years	Sludge disposed outside project boundary
10	W site	Mass	kg	Average Animal weight	Quarterly	D	100%	electronic	Until end of CP + 2 years	Average Animal weight
11	ER <sub>y,estimated</sub>	Mass	Ton	CO <sub>2</sub> e	Annually	C	100%	electronic	Until end of CP + 2 years	Yearly methane potential generation
12	FFR	-----	---	Feed Formulation	Monthly	D	100%	electronic	Until end of CP + 2 years	Feed Formulation Rations
13	P biogas	Pressure	mbar	Biogas Pressure	Monthly	M	100%	electronic	Until end of CP + 2 years	Biogas pressure
14	Genetic Source	Document	-----	genetic	Annually	D	100%	electronic	Until end of CP + 2 years	Genetic Source
15	MS% i,y	fraction	%	Manure handled	Annually	E	100%	electronic	Until end of CP + 2 years	General Site Inspection
16	FV <sub>RG,h</sub>	volume	m <sup>3</sup> /h	Volume	Monthly	M	100%	electronic	Until end of CP + 2 years	Volume of residual gas
17	fV <sub>CH4,RG</sub>	fraction	%	Methane content	TBD(*)	M	100%	electronic	Until end of CP + 2 years	Volumetric methane fraction of the residual gas
18	TM <sub>RG,h</sub>	mass	Kg/h	Mass flow rate	Monthly	C	100%	electronic	Until end of CP + 2 years	Total mass flow rate of the residual gas
19	N day,y	number	days	days	Monthly	M	100%	electronic	Until end of CP + 2 years	Nr. Of days animal is alive
20	N p,y	number	heads	Nr of heads	Monthly	M	100%	electronic	Until end of CP + 2 years	Nr. Of heads per category annually
21	ndy	number	days	days	Annually	M	100%	electronic	Until end of CP + 2 years	Number of days the treatment plant was operational

(\*) TBD: to be determinate to attend 95% confidence level

The monitoring plan will concentrate on ensuring the emission reductions are accurately accounted within the project boundary.

Brascarbon introduce de operational procedures, from the Brascarbon Operational Procedures Manual, to facilitate the monitoring system of the parameters described in the Table B9 – Monitoring Plan.

A list of the operational procedures can be found in the annex 4, at the end of this project document design.

The summary of the operational procedures with the main activities is described below:

### Monitoring of the Flare Temperature

Temperature of the flare will be controlled by a logic system which will be able to store the burning temperature every minute. The sensor - thermo coupling - is installed in the flare body. The signal from the thermocouple is sent to the CLP where the information of the temperature is recorded every each minute.

The file information from the logic system will be recovered monthly using a pendrive and the file will be sent to the QA/QC officer to manage the information for further verification. A spreadsheet in excel is available from the system to show the temperature per minute per day.

The system CLP and the thermocouple will be powered by solar cell – no use of energy from the grid. A 12 volts battery is also included in the system to save energy to be used during the night or days lack of sun. The battery capacity is for 240 hours.

In the operational procedure POP 1 can be found the formulary 01.001 where the temperature information is managed according to the specification above mentioned.

All QA/QC procedures are described in the operational procedure related to the maintenance and/or calibration of the equipment.



PEN DRIVE



CLP

### Site Inspection.

A check list included in the procedure POP 2 – Site Inspection - number 02.001 is the basic orientation to guide the technicians during inspection in the field to follow all items related to the project activity installation.

Attached on it, the MS% i,y - Fraction of manure handled in the system during the year, is included to be inspected during the each farm visit.

No changes in the manure managing system will be permitted during the project activity.

Variables to be monitored: SITE INSPECTION and MS%i,y.

**Average number of animals.**

To calculate the average number of animals per category LT in the year y ( $N_{LT,y}$ ) the operational procedure has the formulary 03.003 from the operational procedure POP 3 (average number of animals) where it takes into account of the number of days the animal is alive in the year y ( $N_{day,y}$ ) and the number of animals produced per category LT in the year y ( $N_{p,y}$ ).

The days of animals alive and the total animal produced is also monitored with the same procedure and the formulary 03.003.

The formula used to the calculation is indicated in the PDD section B.4, step 2 item B, equation B3.

Variables to be monitored:  $N_{LT,y}$ ,  $N_{day,y}$  and  $N_{p,y}$ .

**Measurement of the volumetric flow rate of the biogas.**

The operational procedure POP 4- Measurement of the biogas flow rate, is a guide to explain to the technicians how to obtain the biogas flow rate.

The control of the flow rate is by a CLP (see picture in the POP 1 description above) installed in the control panel in the project activity site.

The panel is equipped with solar cells to supply energy to the system, a battery (capacity for 10 days lack of sun) and the flow rate transmitter device to receive information from the thermal mass meter. The flow meter used in the project activity is a thermal mass flow meter.

The system is very confident and supplied by Endress+hauser, leader of measurement system of liquids and gases. Example of the meter used in the project activity:



The information recorded in the CLP is recovered by the use of a pendrive and the file containing the information will be sent to the QA/QC officer to manage the information for further verification. A spreadsheet in excel is available from the system to show the flow rate per minute per day.

The variables measured with this procedure are:  $BG_{burnt,y}$  and  $FV_{RG,h}$ .

The data monitored is controlled in the formulary 04.001 attached in the operational procedure POP 4.

**Methane content determination.**

The POP 5- Methane content was prepared to guide the technicians how to obtain the methane content using electronic equipment.

The methane content is obtained by electronic equipment BIOGAS or TESTO.

The concentration of methane is measured in a few seconds before starting the measurement button.

The operation of the equipment and the devices to be used is clearly described in the operational procedure as so as in the equipment manual.

Both equipment is able to measure the methane concentration in the biogas or in the flare residual gas.

The variables measured with this equipment are:  $W_{CH_4,y}$  and  $fV_{CH_4,RG,y}$ .

All QA/QC procedures are described in the operational procedure related to the maintenance and/or calibration of the equipment.

The data monitored is controlled in the formulary 04.001.

#### **Biogas temperature measurement.**

The biogas temperature is obtained by electronic equipment BIOGAS.

The methane temperature is measured in a few seconds after inserting the thermocouple in the biogas line device.

The operation of the equipment and the devices to be used is clearly described in the operational procedure as so as in the equipment manual.

All QA/QC procedures are described in the operational procedure related to the maintenance and/or calibration of the equipment.

The variable measured with this equipment is: T biogas.

The data monitored is controlled in the formulary 04.001 described in the operational procedure POP 4 – Biogas temperature measurement.

#### **Density of the methane determination.**

The POP 7- Density of the Methane - is a guide to calculate the methane density. The formulary 07.001 attached in the operational procedure shows the data to be filled to make the calculation.

The methane density calculation is according to the Tool to determine project emissions from flaring gases containing methane.

The variable monitored with this procedure:  $D_{CH_4}$ .

#### **Flare efficiency.**

The operational procedure POP 8 – Flare efficiency was developed to monitoring and calculation of the flare efficiency.

The manufacturer's specifications were taken into consideration in the installation of the flares according to the maximum theoretical flow of biogas for each swine farm. Hence, only the temperature of the enclosed flare must be monitored to ensure adequate combustion of the biogas in the flare and the flare efficiency is calculated according to the following criteria::

- a) If the exhaust gas temperature is  $\geq 500$  °C, the flare efficiency is 90% in the respective hour.
- b) If the exhaust gas temperature is  $< 500$  °C, the flare efficiency is 0% in the respective hour.

Brascarbon developed the formulary 08.001 in the operational procedure to monitor the hourly flare efficiency according to the criteria above mentioned.

The variable monitored with this procedure: FE.



### **Biogas pressure.**

The biogas pressure is obtained by electronic equipment BIOGAS and procedures described in the operational procedure POP 13- Biogas pressure.

The operating pressure of the digester is atmospherically.

The operation of the equipment and the devices to be used is clearly described in the operational procedure as so as in the equipment manual.

All QA/QC procedures are described in the operational procedure related to the maintenance and/or calibration of the equipment.

The variable measured with this equipment is: P biogas.

The data monitored is controlled in the formulary 04.001.

### **Formulated feed rations.**

Monitoring and controlling of the formulated feed rations used per animal category per confined feed animal operation.

The variable monitored: FFR.

Reference of the operational procedure: POP 14 – formulated feed rations monitoring.

### **Genetic Source.**

Monitoring and controlling of the genetic source in the project activity per farm.

The variable monitored: GENETIC SOURCE.

Reference of the operational procedure: POP 15 – Genetic Source Monitoring.

### **Animal weight.**

The animal weight is monitored and controlled by a formulary 16.001 where each animal category is monitored during the year, according to the operational procedure POP 16 – Animal Weight Monitoring.

Quarterly the data from the feed operations are checked and transferred to the formulary.

Records available in the feed operations will be copied and filed at Brascarbon office and attached with the formulary 16.001.

The variable monitored: W site.

### **Methane mass flow rate in the residual gas.**

The residual mass flow rate can be determinate by the POP 17 – Emissions reductions ex-post, where it calculates all parameters to determine the emissions reductions ex-post.

The operational procedure is based according to the Annex 13 – Tool to determine project emissions from flaring gases containing methane equation 15 on Step 7 and equation 13 Step 5. The variables monitored with this procedure:

- $TM_{RG,h}$ ; mass flow rate of the methane in the residual gas in the hour h.
- $ER_{y,ex-post}$ ; emissions reductions achieved by the project activity based in the monitored values in the year y, in ton CO<sub>2e</sub>
- $BE_{y,ex-post}$ ; baseline emissions monitored ex-post, in ton CO<sub>2e</sub>.
- $PE_{y,ex-post}$ ; Project emissions ex-post with monitorated data, in ton CO<sub>2e</sub>.
- $MD_y$ ; Methane captured and destroyed ex-post.

The formularies 17.001 and 17.002 as so as 10.001 are used to determine the variables above mentioned.

**Number of days the treatment plant was operational**

The number of days the treatment plant was operational can be determinate by the POP 24 – days of functioning, where it is monitored the number of days in a year “y” that the treatment plant has operated.

The variables monitored with this procedure:  $nd_y$

**Monitoring System**

The monitoring system will be followed according to the Brascarbon Operations Procedures Manual, detailed to attend all necessary controls in the site and all monitoring requisites specified in the approved methodology AMS.III.D – Version 17 – “***Methane recovery in animal manure management systems***”. If in the future an electricity generator for in site electricity supply is installed, requisites from methodology AMS-III.H /version 16, **Methane recovery in wastewater treatment**, will also be followed.

**Operational / Monitoring Procedures**

Operational / Monitoring procedures listed in the Annex 4.

**Quality Assurance/Control: QA/QC**

The measuring instruments will be calibrated by the manufacturers’ representatives on a manufacturer’s recommendation basis. The certification of calibration will be controlled by QA/QC officer. The QA/QC officer will be also responsible to assure that all Brascarbon Operations Procedures will be executed based in the Iso9000.

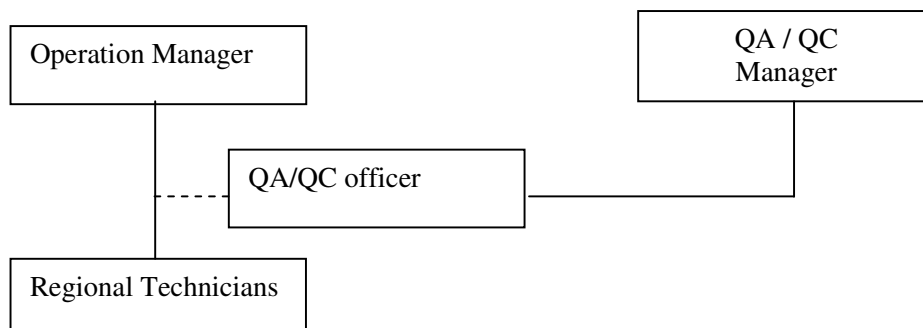
**Training**

The training of the technicians and all employees is provided by the Operations Manager. The topics of the training are as below:

1. General explanation of the project.
2. Explanation of the procedures of the Operations Procedure Manual.
3. Procedures and preparations for the star-up.
4. Maintenance procedures.
5. Biogas safety instructions.
6. Biogas measurement.
7. Safety Issues.

The training document and the equipment manuals are stored for easy reference in the Brascarbon office.

## Organization



### ***Operation Manager***

Engineer, responsible for the project maintenance and monitoring data collection.

### ***QA/QC Manager***

Engineer, responsible for the monitoring operation and emissions for the project activity.

### ***Regional Technicians***

Technician, responsible for the monitoring and maintenance of the site projects according to the procedures in the Operations Procedure Manual.

### ***QA/QC officer***

Responsible to assure the quality control of the information and the CDM project documents.

## **Maintenance**

For maintenance of the equipment and to attend the monitoring system, BRASCARBON will use the practices recommended by the equipment supplier for repairs, calibration, etc...

The regular maintenance in the site project boundary will be according to the Brascarbon Operation Procedures Manual for all items considered in the project such as the digester, flare, measuring systems, pipings, electrical parts and others.

<b>B.8 Date of completion of the application of the baseline and monitoring methodology and the name of the responsible person(s)/entity(ies)</b>
---

The methodology applied to this project activity is AMS-III.D./Version 17, ***Methane recovery in animal manure management systems***. If in the future an electricity generator for in site electricity supply is installed, methodology AMS-III.H /version 16, ***Methane recovery in wastewater treatment***, will also be applied.

The simplified monitoring methodologies are applicable to this project activity because they provide a method to accurately measure and record the GHG emissions that will be captured and combusted by the project activity.

The completion date of the application of the baseline is 31/03/2009 (updated as to April 2011 on the investment analysis).

The entity determining this monitoring methodology is BrasCarbon Consultoria, Projetos e Representação S/A, who is the project developer listed in Annex 1 of this document.

<b>SECTION C. Duration of the <u>project activity</u> / <u>crediting period</u></b>
---

<b>C.1. Duration of the <u>project activity</u>:</b>
--

<b>C.1.1. <u>Starting date of the project activity</u>:</b>
---

The starting date for this activity is **15/06/2011**. This date represents the prevision of the first contracted company to develop the first site construction.

<b>C.1.2. <u>Expected operational lifetime of the project activity</u>:</b>
---

The expected life for this project is **21 years and 0 months**.

<b>C.2. Choice of the <u>crediting period</u> and related information:</b>
--

<b>C.2.1. <u>Renewable crediting period</u></b>
---

<b>C.2.1.1. Starting date of the first <u>crediting period</u>:</b>
---

The starting date of the crediting period is: **01/01/2012 or the registration date of the project activity**, what happens by last.

<b>C.2.1.2. Length of the first <u>crediting period</u>:</b>
--

The length of the crediting period is **7 years and 0 months**,

**C.2.2. Fixed crediting period:**

**C.2.2.1. Starting date:**

The project activity will not use a fixed period.

**C.2.2.2. Length:**

The project activity will not use a fixed period.

**SECTION D. Environmental impacts**

**D.1. If required by the host Party, documentation on the analysis of the environmental impacts of the project activity:**

An environmental impact analysis is not required for this type of GHG project activity, Beyond the principal environmental benefits of the project includes:

- reducing atmospheric emissions of volatile solids causing odour
- reducing the population of flies
- best control on the bio-security system
- reducing the possible spread of disease

**D.2. If environmental impacts are considered significant by the project participants or the host Party, please provide conclusions and all references to support documentation of an environmental impact assessment undertaken in accordance with the procedures as required by the host Party:**

Digesters, to reduce GHG emissions in the confined animals operations, are not pre-requisite to get the environmental licenses. The environmental impacts concerning the project activity is very significant because this project activity can contribute for the local and global sustainable development.

[www.cnpsa.embrapa.br/sgc/sgc\\_publicacoes/publicacao\\_l4l77t4r.PDF](http://www.cnpsa.embrapa.br/sgc/sgc_publicacoes/publicacao_l4l77t4r.PDF)

[www.cnpsa.embrapa.br/sgc/sgc\\_publicacoes/publicacao\\_q9m29k2j.pdf](http://www.cnpsa.embrapa.br/sgc/sgc_publicacoes/publicacao_q9m29k2j.pdf)

[www.cnpsa.embrapa.br/sgc/sgc\\_publicacoes/publicacao\\_b889i6r.pdf](http://www.cnpsa.embrapa.br/sgc/sgc_publicacoes/publicacao_b889i6r.pdf)

[www.cnpsa.embrapa.br/sgc/sgc\\_publicacoes/publicacao\\_f6c34f6j.pdf](http://www.cnpsa.embrapa.br/sgc/sgc_publicacoes/publicacao_f6c34f6j.pdf)

**SECTION E. Stakeholders' comments****E.1. Brief description how comments by local stakeholders have been invited and compiled:**

The invitation for the stakeholders' consultation for the project activity was done by personal mail asking for comments of the PDD attached to the Brascarbon site and also in the UNFCCC site, according to the Resolution 7 of the Brazilian DNA.

The following list of the stakeholders was invited to comment on the project activity according to the Resolution 7 of the Brazilian DNA:

- City Hall and Chamber of Councilors.
- Departments and Secretaries: municipal, state and federal.
- ONG's
- Unions.
- Ministry Public – State
- Ministry Public – Federal
- State
- Legislative Assembly

**E.2. Summary of the comments received:**

No comments and negative issues were received from the local stakeholders.

**E.3. Report on how due account was taken of any comments received:**

No comments were received from stakeholders.

**Annex 1**

**CONTACT INFORMATION ON PARTICIPANTS IN THE PROJECT ACTIVITY**

Organization:	Brascarbon Consultoria, Projetos e Representação S/A.
Street/P.O.Box:	Rua Doutor Gentil Leite Martins
Building:	
City:	São Paulo
State/Region:	SP
Postfix/ZIP:	04648 -001
Country:	Brazil
Telephone:	+55 11 5523 7059
FAX:	+55 11 2533-6346
E-Mail:	<a href="mailto:info@brascarbon.com.br">info@brascarbon.com.br</a>
URL:	<a href="http://www.brascarbon.com.br">www.brascarbon.com.br</a>
Represented by:	
Title:	Director
Salutation:	Mr,
Last Name:	Pacífico
Middle Name:	
First Name:	Mário
Department:	Operations
Mobile:	+55 11 8901 7810
Direct FAX:	
Direct tel:	
Personal E-Mail:	mario.silva@brascarbon.com.br

Organization:	Luso Carbon Fund – Fundo Especial de Investimento Fechado
Street/P.O.Box:	Rua Tierno Galvan
Building:	Torre 3, 10º piso
City:	Lisbon
State/Region:	Lisbon
Postfix/ZIP:	1070-274
Country:	Portugal
Telephone:	+351 21 3806510
FAX:	+351 21 3806519
E-Mail:	<a href="mailto:geral@mco2.pt">geral@mco2.pt</a>
URL:	<a href="http://www.mco2.pt">www.mco2.pt</a>
Represented by:	
Title:	Director
Salutation:	Mr.
Last Name:	Costa
Middle Name:	
First Name:	Luis
Department:	Director
Personal E-Mail:	lcosta@mco2.pt

**Annex 2**

**INFORMATION REGARDING PUBLIC FUNDING**

There is no public funding being provided for this project.





PROJECT DESIGN DOCUMENT FORM (CDM-SSC-PDD) - Version 03

CDM – Executive Board

Page 57

ANNEX 3 - BASELINE INFORMATION

ID	Farm/Site	Animal Category	N <sub>day</sub>	N <sub>py</sub>	N <sub>L,T,y</sub>	W <sub>default</sub>	W <sub>site</sub>	VS <sub>default</sub>	VS <sub>LT</sub>	nd <sub>y</sub>	VS <sub>(L,T,y)</sub>	UF <sub>b</sub>	B <sub>0(T)</sub>	GWP <sub>CH4</sub>	D <sub>CH4</sub>	MCF	MS <sub>(T,S,K)</sub>	MS% <sub>i,y</sub>	BE <sub>y</sub>	PE <sub>PL,y</sub>	PE <sub>flare,y</sub>	PE <sub>power,y</sub>	PE <sub>transp,y</sub>	PE <sub>storage,y</sub>	PE <sub>y</sub>	ER <sub>y</sub>		
1	Granjas Piaseski	Sows	365	2.000	2.000	198	220	0,46	0,51	365	187	0,94	0,45	21	0,00067	79	1	1	1.754	236,00	175,00	-	-	-	411	1.343		
		Finishers	90	55.481	13.680	50	90	0,3	0,54	365	197	0,94	0,45	21	0,00067	79	1	1	12.678	1.707,00	1.268,00	-	-	-	2.975	9.703		
		Nursery/Weaners	70	49.314	9.457	50	20	0,3	0,12	365	44	0,94	0,45	21	0,00067	79	1	1	1.948	262,00	195,00	-	-	-	457	1.491		
		Boars	365	20	20	50	240	0,3	1,44	365	526	0,94	0,45	21	0,00067	79	1	1	49	7,00	5,00	-	-	-	12	37		
		Gilts	365	600	600	198	220	0,46	0,51	365	187	0,94	0,45	21	0,00067	79	1	1	526	71,00	53,00	-	-	-	124	402		
		total			25.758														16.955	2.283	1.696	-	-	-	3.979	12.976		
2	Lote Rural 12	Sows	365	-	-	198	220	0,46	0,51	365	187	0,94	0,45	21	0,00067	79	1	1	-	-	-	-	-	-	-	-	-	
		Finishers	90	37.800	9.321	50	90	0,3	0,54	365	197	0,94	0,45	21	0,00067	79	1	1	8.638	1.163,00	864,00	-	-	-	-	2.027	6.611	
		Nursery/Weaners	70	-	-	50	20	0,3	0,12	365	44	0,94	0,45	21	0,00067	79	1	1	-	-	-	-	-	-	-	-	-	
		Boars	365	-	-	50	240	0,3	1,44	365	526	0,94	0,45	21	0,00067	79	1	1	-	-	-	-	-	-	-	-	-	
		Gilts	365	-	-	198	220	0,46	0,51	365	187	0,94	0,45	21	0,00067	79	1	1	-	-	-	-	-	-	-	-	-	
		total			9.321															8.638	1.163	864	-	-	-	-	2.027	6.611
3	Chácara Jateí Lote 45	Sows	365	-	-	198	220	0,46	0,51	365	187	0,94	0,45	21	0,00067	79	1	1	-	-	-	-	-	-	-	-	-	
		Finishers	90	18.900	4.660	50	90	0,3	0,54	365	197	0,94	0,45	21	0,00067	79	1	1	4.319	582,00	432,00	-	-	-	-	1.014	3.305	
		Nursery/Weaners	70	-	-	50	20	0,3	0,12	365	44	0,94	0,45	21	0,00067	79	1	1	-	-	-	-	-	-	-	-	-	
		Boars	365	-	-	50	240	0,3	1,44	365	526	0,94	0,45	21	0,00067	79	1	1	-	-	-	-	-	-	-	-	-	
		Gilts	365	-	-	198	220	0,46	0,51	365	187	0,94	0,45	21	0,00067	79	1	1	-	-	-	-	-	-	-	-	-	
		total			4.660															4.319	582	432	-	-	-	-	1.014	3.305
4	Sítio Lote 23 Qda. 27	Sows	365	2.260	2.260	198	220	0,46	0,51	365	187	0,94	0,45	21	0,00067	79	1	1	1.982	267,00	198,00	-	-	-	-	465	1.517	
		Finishers	90	-	-	50	90	0,3	0,54	365	197	0,94	0,45	21	0,00067	79	1	1	-	-	-	-	-	-	-	-	-	
		Nursery/Weaners	70	55.728	10.688	50	20	0,3	0,12	365	44	0,94	0,45	21	0,00067	79	1	1	2.201	296,00	220,00	-	-	-	-	516	1.685	
		Boars	365	23	23	50	240	0,3	1,44	365	526	0,94	0,45	21	0,00067	79	1	1	57	8,00	6,00	-	-	-	-	14	43	
		Gilts	365	678	678	198	220	0,46	0,51	365	187	0,94	0,45	21	0,00067	79	1	1	595	80,00	60,00	-	-	-	-	140	455	
		total			13.649															4.835	651	484	-	-	-	-	1.135	3.700
5	Sítio Lote 11 Qda. 24	Sows	365	-	-	198	220	0,46	0,51	365	187	0,94	0,45	21	0,00067	79	1	1	-	-	-	-	-	-	-	-	-	
		Finishers	90	18.900	4.660	50	90	0,3	0,54	365	197	0,94	0,45	21	0,00067	79	1	1	4.319	582,00	432,00	-	-	-	-	1.014	3.305	
		Nursery/Weaners	70	-	-	50	20	0,3	0,12	365	44	0,94	0,45	21	0,00067	79	1	1	-	-	-	-	-	-	-	-	-	
		Boars	365	-	-	50	240	0,3	1,44	365	526	0,94	0,45	21	0,00067	79	1	1	-	-	-	-	-	-	-	-	-	
		Gilts	365	-	-	198	220	0,46	0,51	365	187	0,94	0,45	21	0,00067	79	1	1	-	-	-	-	-	-	-	-	-	
		total			4.660															4.319	582	432	-	-	-	-	1.014	3.305
6	Sítio Nossa senhora Aparecida	Sows	365	-	-	198	220	0,46	0,51	365	187	0,94	0,45	21	0,00067	79	1	1	-	-	-	-	-	-	-	-	-	
		Finishers	90	18.900	4.660	50	90	0,3	0,54	365	197	0,94	0,45	21	0,00067	79	1	1	4.319	582,00	432,00	-	-	-	-	1.014	3.305	
		Nursery/Weaners	70	-	-	50	20	0,3	0,12	365	44	0,94	0,45	21	0,00067	79	1	1	-	-	-	-	-	-	-	-	-	
		Boars	365	-	-	50	240	0,3	1,44	365	526	0,94	0,45	21	0,00067	79	1	1	-	-	-	-	-	-	-	-	-	
		Gilts	365	-	-	198	220	0,46	0,51	365	187	0,94	0,45	21	0,00067	79	1	1	-	-	-	-	-	-	-	-	-	
		total			4.660															4.319	582	432	-	-	-	-	1.014	3.305



PROJECT DESIGN DOCUMENT FORM (CDM-SSC-PDD) - Version 03

CDM – Executive Board

Page 58

ANNEX 3 - BASELINE INFORMATION (Continuation)

ID	Farm/Site	Animal Category	N <sub>day</sub>	N <sub>py</sub>	N <sub>ty</sub>	W <sub>default</sub>	W <sub>site</sub>	VS <sub>default</sub>	VS <sub>LT</sub>	nd <sub>y</sub>	VS <sub>(LT,y)</sub>	UF <sub>b</sub>	B <sub>g(T)</sub>	GWP <sub>CH4</sub>	D <sub>CH4</sub>	MCF	MS <sub>(T,S,X)</sub>	MS% <sub>i,y</sub>	BE <sub>y</sub>	PE <sub>PL,y</sub>	PE <sub>flare,y</sub>	PE <sub>power,y</sub>	PE <sub>transp,y</sub>	PE <sub>storage,y</sub>	PE <sub>y</sub>	ER <sub>y</sub>
7	Sítio Palmeiras - Lote 56	Sows	365	-	-	198	220	0.46	0.51	365	187	0.94	0.45	21	0.00067	79	1	1	-	-	-	-	-	-	-	-
		Finishers	90	18.900	4.660	50	90	0.3	0.54	365	197	0.94	0.45	21	0.00067	79	1	1	4.319	582,00	432,00	-	-	-	1.014	3.305
		Nursery/Weaners	70	-	-	50	20	0.3	0.12	365	44	0.94	0.45	21	0.00067	79	1	1	-	-	-	-	-	-	-	-
		Boars	365	-	-	50	240	0.3	1.44	365	526	0.94	0.45	21	0.00067	79	1	1	-	-	-	-	-	-	-	-
		Gilts	365	-	-	198	220	0.46	0.51	365	187	0.94	0.45	21	0.00067	79	1	1	-	-	-	-	-	-	-	-
		total			4.660														4.319	582	432	-	-	-	1.014	3.305
8	Sítio Lote 54 Qda. 10	Sows	365	-	-	198	220	0.46	0.51	365	187	0.94	0.45	21	0.00067	79	1	1	-	-	-	-	-	-	-	-
		Finishers	90	18.900	4.660	50	90	0.3	0.54	365	197	0.94	0.45	21	0.00067	79	1	1	4.319	582,00	432,00	-	-	-	1.014	3.305
		Nursery/Weaners	70	-	-	50	20	0.3	0.12	365	44	0.94	0.45	21	0.00067	79	1	1	-	-	-	-	-	-	-	-
		Boars	365	-	-	50	240	0.3	1.44	365	526	0.94	0.45	21	0.00067	79	1	1	-	-	-	-	-	-	-	-
		Gilts	365	-	-	198	220	0.46	0.51	365	187	0.94	0.45	21	0.00067	79	1	1	-	-	-	-	-	-	-	-
		total			4.660														4.319	582	432	-	-	-	1.014	3.305
9	Granja Chapadão	Sows	365	-	-	198	220	0.46	0.51	365	187	0.94	0.45	21	0.00067	79	1	1	-	-	-	-	-	-	-	-
		Finishers	90	18.900	4.660	50	90	0.3	0.54	365	197	0.94	0.45	21	0.00067	79	1	1	4.319	582,00	432,00	-	-	-	1.014	3.305
		Nursery/Weaners	70	-	-	50	20	0.3	0.12	365	44	0.94	0.45	21	0.00067	79	1	1	-	-	-	-	-	-	-	-
		Boars	365	-	-	50	240	0.3	1.44	365	526	0.94	0.45	21	0.00067	79	1	1	-	-	-	-	-	-	-	-
		Gilts	365	-	-	198	210	0.46	0.49	365	178	0.94	0.45	21	0.00067	79	1	1	-	-	-	-	-	-	-	-
		total			4.660														4.319	582	432	-	-	-	1.014	3.305
10	Sítio Lote 3 Qda. 27	Sows	365	-	-	198	220	0.46	0.51	365	187	0.94	0.45	21	0.00067	79	1	1	-	-	-	-	-	-	-	-
		Finishers	90	18.900	4.660	50	90	0.3	0.54	365	197	0.94	0.45	21	0.00067	79	1	1	4.319	582,00	432,00	-	-	-	1.014	3.305
		Nursery/Weaners	70	-	-	50	20	0.3	0.12	365	44	0.94	0.45	21	0.00067	79	1	1	-	-	-	-	-	-	-	-
		Boars	365	-	-	50	240	0.3	1.44	365	526	0.94	0.45	21	0.00067	79	1	1	-	-	-	-	-	-	-	-
		Gilts	365	-	-	198	210	0.46	0.49	365	178	0.94	0.45	21	0.00067	79	1	1	-	-	-	-	-	-	-	-
		total			4.660														4.319	582	432	-	-	-	1.014	3.305
11	Fazenda Chapadão	Sows	365	2.260	2.260	198	220	0.46	0.51	365	187	0.94	0.45	21	0.00067	79	1	1	1.982	267,00	198,00	-	-	-	465	1.517
		Finishers	90	-	-	50	90	0.3	0.54	365	197	0.94	0.45	21	0.00067	79	1	1	-	-	-	-	-	-	-	-
		Nursery/Weaners	70	55.728	10.688	50	20	0.3	0.12	365	44	0.94	0.45	21	0.00067	79	1	1	2.201	296,00	220,00	-	-	-	516	1.685
		Boars	365	23	23	50	240	0.3	1.44	365	526	0.94	0.45	21	0.00067	79	1	1	57	8,00	6,00	-	-	-	14	43
		Gilts	365	678	678	198	210	0.46	0.49	365	178	0.94	0.45	21	0.00067	79	1	1	568	76,00	57,00	-	-	-	133	435
		total			13.649														4.808	647	481	-	-	-	1.128	3.680
12	Sítio Lote 11 Qda. 27	Sows	365	-	-	198	220	0.46	0.51	365	187	0.94	0.45	21	0.00067	79	1	1	-	-	-	-	-	-	-	-
		Finishers	90	16.650	4.105	50	90	0.3	0.54	365	197	0.94	0.45	21	0.00067	79	1	1	3.805	512,00	381,00	-	-	-	893	2.912
		Nursery/Weaners	70	-	-	50	20	0.3	0.12	365	44	0.94	0.45	21	0.00067	79	1	1	-	-	-	-	-	-	-	-
		Boars	365	-	-	50	240	0.3	1.44	365	526	0.94	0.45	21	0.00067	79	1	1	-	-	-	-	-	-	-	-
		Gilts	365	-	-	198	210	0.46	0.49	365	178	0.94	0.45	21	0.00067	79	1	1	-	-	-	-	-	-	-	-
		total			4.105														3.805	512	381	-	-	-	893	2.912
13	Sítio São João Lote 07 Qda. 28	Sows	365	-	-	198	220	0.46	0.51	365	187	0.94	0.45	21	0.00067	79	1	1	-	-	-	-	-	-	-	-
		Finishers	90	16.650	4.105	50	90	0.3	0.54	365	197	0.94	0.45	21	0.00067	79	1	1	3.805	512,00	381,00	-	-	-	893	2.912
		Nursery/Weaners	70	-	-	50	20	0.3	0.12	365	44	0.94	0.45	21	0.00067	79	1	1	-	-	-	-	-	-	-	-
		Boars	365	-	-	50	240	0.3	1.44	365	526	0.94	0.45	21	0.00067	79	1	1	-	-	-	-	-	-	-	-
		Gilts	365	-	-	198	210	0.46	0.49	365	178	0.94	0.45	21	0.00067	79	1	1	-	-	-	-	-	-	-	-
		total			4.105														3.805	512	381	-	-	-	893	2.912

### **Annex 4**

## **MONITORING INFORMATION**

The following table presents the explanation of the QA/QC procedures of the monitoring plan followed by BRASCARBON in order to achieve certified emission reductions, after each validation and verification process:

ID	DATA VARIABLE	UNCERTAINTY LEVEL	DATA UNIT	DATA ORIGIN
1	T f	Low	°C	Register from the measurement system, information managed by Brascarbon,
2	Site Inspection	Low	-----	Register information managed by Brascarbon
3	N <sub>LT,y</sub>	Low	Nr, Of heads by category	Register from the measurement system, information managed by Brascarbon,
4	BG <sub>burned,y</sub>	Low	m <sup>3</sup>	Register from the measurement system, information managed by Brascarbon,
5	W <sub>CH4</sub>	Low	%	Register from the measurement system, information managed by Brascarbon,
6	T <sub>biogas</sub>	Low	°C	Register from the measurement system, information managed by Brascarbon,
7	D <sub>CH4</sub>	Low	t/m <sup>3</sup>	Register from the measurement system, information managed by Brascarbon,
8	FE	Low	%	Register information managed by Brascarbon,
9	QDM	Low	---	Register from the measurement system, information managed by Brascarbon,
10	W site	Low	Kg	Register from the measurement system, information managed by Brascarbon,
11	ER <sub>y,ex-post</sub>	Low	Tons CO <sub>2</sub> e	Register from the measurement system, information managed by Brascarbon,
12	FFR	Low	-----	Register from the measurement system, information managed by Brascarbon,
13	P biogas	Low	mbar	Register information managed by Brascarbon.
14	Genetic Source	Low	-----	Register information managed by Brascarbon.
15	MS% <sub>i,y</sub>	Low	%	Register information managed by Brascarbon.
16	FV <sub>RG,h</sub>	Low	m <sup>3</sup> /h	Register information managed by Brascarbon.
17	fV <sub>CH4,RG</sub>	Low	%	Register information managed by Brascarbon.
18	TM <sub>RG,h</sub>	Low	Kg/h	Register information managed by Brascarbon.
19	N <sub>day,y</sub>	Low	days	Register information managed by Brascarbon.
20	N <sub>p,y</sub>	Low	Nr, Of heads by category	Register information managed by Brascarbon.
21	ndy	Low	days	Register information managed by Brascarbon.

BRASCARBON has implemented an Operation Procedures Manual and formularies to capture and report monitoring data and maintenance activities throughout the project lifecycle. On-site assessment, supplier production data, task tracking, and post-implementation auditing tools have been developed to ensure accurate, consistent, and complete data gathering and project

implementation.

By coupling these capabilities with an ISO-based quality and environmental management system, BRASCARBON enables transparent data collection and verification.

Procedures from Brascarbon Operation Procedures Manual to ensure accurate and consistent data for monitoring system have been developed as indicated in the following table:

ID	DATA /PARAMETERS/TITLE	FREQUENCY	RESPONSIBLE	PROCEDURE	COMENTS
1	T <sub>f</sub>	Every minute	TR	POP 1	Flare Temperature
2	SITE INSPECTION MS% i,y	A	TR	POP 2	General site Inspection
3	N <sub>LT,y</sub> N <sub>Day,y</sub> N <sub>p,y</sub>	M	QC	POP 3	Number of heads
4	BG <sub>burnt,y</sub> FV <sub>RG,h</sub>	M	QC	POP 4	Biogas produced and burnt
5	W <sub>CH4,y</sub> fv <sub>CH4,RG</sub>	TBD	TR	POP 5	Methane content
6	T <sub>biogas</sub>	M	TR	POP 6	Biogas Temperature
7	D <sub>CH4</sub>	M	QC	POP 7	Methane Density
8	FE	M	QC	POP 8	Flare Efficiency
9	QDM	Every Batch	TR	POP 9	Sludge Mass
10	ER	A	QC	POP 10	Emission reduction calculation
11	TRAINING	A	OM	POP 11	General training of procedures and safety issues
12	MAINTENANCE	S	OM	POP 12	Up-date of the maintenance activities
13	P <sub>biogas</sub>	M	TR	POP 13	Biogas pressure
14	FFR	M	TR	POP 14	Formulated Feed Rations
15	GENETIC SOURCE	A	TR	POP 15	Genetic source
16	W <sub>site</sub>	Q	TR	POP 16	Average animal weight
17	ER ex-post	A	QC	POP 17	Yearly emissions reductions ex-post
18	ndy	A	QC	POP 24	Number of days the treatment plant was operational

Legend:

A: Annually  
 Q: Quarterly  
 M: Monthly  
 S: Semesterlly  
 TR: Regional Technician  
 QC: Quality Control  
 TBD: to be determinate to attend 95% confidence level  
 OM: Operation Manger