



**CLEAN DEVELOPMENT MECHANISM
PROJECT DESIGN DOCUMENT FORM (CDM-SSC-PDD)
Version 03 - in effect as of: 22 December 2006**

CONTENTS

- A. General description of the small scale project activity
- B. Application of a baseline and monitoring methodology
- C. Duration of the project activity / crediting period
- D. Environmental impacts
- E. Stakeholders' comments

Annexes

Annex 1: Contact information on participants in the proposed small scale project activity

Annex 2: Information regarding public funding

Annex 3: Baseline information

Annex 4: Monitoring Information

Revision history of this document

| Version Number | Date | Description and reason of revision |
|-----------------------|------------------|--|
| 01 | 21 January 2003 | Initial adoption |
| 02 | 8 July 2005 | <ul style="list-style-type: none">• The Board agreed to revise the CDM SSC PDD to reflect guidance and clarifications provided by the Board since version 01 of this document.• As a consequence, the guidelines for completing CDM SSC PDD have been revised accordingly to version 2. The latest version can be found at http://cdm.unfccc.int/Reference/Documents. |
| 03 | 22 December 2006 | <ul style="list-style-type: none">• The Board agreed to revise the CDM project design document for small-scale activities (CDM-SSC-PDD), taking into account CDM-PDD and CDM-NM. |

SECTION A. General description of small-scale project activity**A.1 Title of the small-scale project activity:**

BRASCARBON Methane Recovery Project BCA-BRA-04A.
Version 03, 1st March 2010, Brazil.

A.2. Description of the small-scale project activity:

Purpose: The purpose of this project is to mitigate and recover animal effluent related Greenhouse Gas (GHG) by improving the Animal Waste Management System practices in the confined animal feed operations in Bandeirantes, Rio Verde do Mato Grosso, Dourados, Costa Rica and São Gabriel do Oeste located at the Mato Grosso do Sul state, Brazil, developed by BRASCARBON.

In Brazil the agricultural operations related to the confined animals procedures are very wide and grows progressively and intensive to attend the worldwide food demand.

There are three types of Confined Animal Operation for this project: finishing, breeding and nursery.

The confined animal wastewater operation consists in transporting wastewater, a compound of fresh water mixed with manure and urine that accumulates in pits under or beside the barns, to an open lagoon for evaporation, fed by gravity pipeline systems. The organic material, degraded in the primary treatment lagoon, is then digested, thereby producing significant amounts of methane.

These systems emit methane (CH₄) resulting from anaerobic decomposition process.

The swine livestock operations create profound environmental consequences, such as greenhouse gas emissions, odour and water/land contamination, as a result of storing animal waste, in places where this operation is not sustainable due to its severe environmental pollution.

The Project Activity consists in the construction of a new covered in-ground anaerobic reactor (digester) that will utilize the organic material currently treated in the wastewater opened lagoon, of the confined animal operations, to produce biogas. All manure will be sent daily directly to biodigester not exceeding 24 hours in the barns.

This project proposes to apply the Methane Recovery methodology identified in Section III.D, of the Indicative Simplified Baseline and Monitoring Methodologies for Small-Scale CDM Project Activity Categories, in swine confined feed operations located on the states mentioned above in Brazil. The expected result of this project is a significant reduction of GHG emissions compared to those emissions that would have occurred in the absence of the project, and also the promotion of sustainable swine production farms, bringing environmental and social benefits, moving from a high-GHG animal waste management system practice to an anaerobic digester, with capture and combustion of resulting biogas.

Contribution to sustainable development:

According to Brazil's Inter-Ministerial Commission on Global Climatic Change¹, manure management is an important issue that needs to be solved.

The swine waste storage and treatment systems in Brazil consists in open tanks, open digesting process and ponds (anaerobic, variable and aerobic), due to the most economic and viable system approved to manage the manure in confined animal feed operations. Economic barriers are very common because producers can invest only in the confined feed operations and with no need to invest in waste management systems.

¹ <http://www.ambientebrasil.com.br>

Financial resources are always used to maintain the confined feed operation working.

Also, waste treatment involves low technology, as open lagoons need less employees and technicians for operation and maintenance.

For those reasons, the project is additional and more details can be found in the section B.5.

Just few producers invest in bio-digesters to have a modern waste management system. The material cumulated in the open lagoons is normally distributed by pumps or gravity and applied to crops and pastures. EMBRAPA² stimulated by the Expansion and Waste Treatment Program of the State of Santa Catarina by giving instructions and providing publications to help the producers and agro-industries to implement projects or systems to control the animal waste management protecting the eco-system.

Failure to do so will spread existing disease continually (i.e. increased (insect) pest populations, problems with allergies and livestock disease). With the purpose of avoiding this problem, Brazil has in recent years, required all confined animals feed operations to change from single to multi-lagoon systems, introducing a Good Practices in confined animal feed operations and even more recently has required them to line the bottom of their primary sedimentation lagoon to prevent effluent infiltration.³

In 2005, the swine population in Mato Grosso do Sul state was 855,000.^{4 5}

Considering that a typical hog produces 4.9 kilograms of effluent daily (Table A1)², annually some 8.4 million metric tons of hog waste produced in this state alone.

Introduce a progressive animal waste management practices throughout this region of Brazil could result in an annual reduction of approximately 2.9 million tonnes⁶ of carbon dioxide equivalent (CO₂e/year).

Table A1. Daily production of effluent by type of swine production

| Stage | Manure kg/day | Manure and Urine kg/day | Volume litres/day |
|-----------------------|---------------|-------------------------|-------------------|
| 25-100 kg | 2.3 | 4.9 | 7.0 |
| Gestating sows | 3.6 | 11.0 | 16.0 |
| Nursing sows | 6.4 | 18.0 | 27.0 |
| Boar pig | 3.0 | 6.0 | 9.0 |
| Piglet | 0.35 | 0.95 | 1.4 |

Source: PNMA-II – Programa Nacional do Meio Ambiente, coordenado pelo Sr. Paulo Armando Vitoria de Oliveira, Concordia – SC, EMBRAPA Suínos e Aves, 2004;
http://www.cnpsa.embrapa.br/pnma/pdf_doc/doc_pnma.pdf

Socio-Economic Sustainability

- Improvement in air quality (e.g. – reduction of Volatile Organic Compounds [VOCs]) and worker safety;
- Elimination of odors in surrounding areas, improving the living standards of neighbors communities;
- Proper handling of the animal waste ensuring an adequate level of protection of human health and the environment;

² PNMA-II – Programa Nacional do Meio Ambiente, coordenado pelo Sr. Paulo Armando Vitoria de Oliveira, Concordia – SC, EMBRAPA Suínos e Aves, 2004; http://www.cnpsa.embrapa.br/pnma/pdf_doc/doc_pnma.pdf

³ <http://www.agricultura.gov.br/pls/portal/url/ITEM/C90C773459FBB52AE0300801FD0AF827> ;

⁴ IBGE – Pesquisa Pecuária Municipal (www.ibge.gov.br).

⁵ www.agricultura.gov.br

⁶ Approximate calculation using IPCC model and emission factors

- By improving the waste management system at the farm, the project will support the continued production of pork in order to meet the consumption needs of the growing global population.

Economic Sustainability

- An increase in local employment of skilled labor for the manufacturing, installation, Operation and maintenance of equipment;
- Additional employment opportunities in the agro-industrial sector, specifically from the use of recycled water from the waste management system on the farms for agricultural activities in surrounding land;
- Infrastructure improvement is in direct alignment with the national goals and objectives for agriculture, livestock, rural development, fishing and nutrition.

Environmental Sustainability

- An overall decrease in the amount of Greenhouse Gases (GHGs) emitted into the atmosphere;
- Improvement in the quality of the water used in the waste management system and its potential use as water for irrigation;
- Avoiding potential dumping of waste into clean sources of water.

Technological Sustainability

- This project will promote a model for the reduction of GHG's produced by Confined Animal Operation and a transfer of technology for methane production and capture through anaerobic digestion and combustion

A.3. Project participants:

| Name of Party involved (*) (host) indicates a host Party) | Private and/or public entity(ies) project participants (*) (as applicable) | Kindly indicate if the Party involved wishes to be considered as project participant (Yes/No) |
|--|---|--|
| Brazil (host) | • Brascarbon Consultoria, Projetos e Representação S/A. (private entity) | No |

A.4. Technical description of the small-scale project activity:

Anaerobic digestion

The technology used is an anaerobic digestion process in which microorganisms break down biodegradable material in the absence of oxygen. The process is widely used to treat wastewater sludge and organic wastes because it provides the reduction of both volume and mass of the input material.

As part of an integrated waste management system, anaerobic digestion reduces the emission of the greenhouse gas into the atmosphere. Anaerobic digestion is a renewable energy source because the process produces a methane and carbon dioxide, rich biogas, suitable for energy production helping the replacement of fossil fuels. The nutrient-rich solids left after digestion can be used as fertilizer also.

The digestion process begins with bacterial hydrolysis of the input materials in order to break down insoluble organic polymers such as carbohydrates and make them available for other bacteria. Acidogenic bacteria then convert the sugars and amino acids into carbon dioxide, hydrogen, ammonia, and organic acids. Acetogenic bacteria then convert these resulting organic acids into acetic acid, along with additional ammonia, hydrogen, and carbon dioxide. Methanogenic bacteria finally are able to convert these products to methane and carbon dioxide.

The equipment is based at an ambient temperature storage covered cells (lagoon) with sufficient capacity to create an adequate Hydraulic Retention Time (HRT). The cell will use a single-piece liner affixed to a reinforced outer concrete frame. The outer cover consists of a synthetic vinyl membrane or High Density Polyethylene (HDPE)-, which is also fastened to the frame. The liner and cover will be sealed together with bolts and iron plate frame. The system also includes a biogas collector piping, from the digester to the flare system.

The flare is enclosed and controlled by a data logger CLP –Controller Logic Programmable – in which the combustion temperature is stored every one minute in the system. This system will record every each minute the combustion temperature to determinate the flare efficiency according to the specification of the flare. A thermocouple installed in the flare is connected to the PLC to control the combustion temperature.

The sparking system in the flare is automatic. Every one second the system sparks.

The biogas flow rate will be also controlled by a CLP in which every each minute the system records the flow rate.

The sparking system, the PLC and the control panel are powered by a 12 volts battery charged by solar cells.

A derivation pipe will be installed before the flare and after the flow meter, for future purposes, to supply biogas to the power generators, for in site electricity supply where **no claims for emissions reductions by the electricity generation will be requested** during the entire project activity but by the emissions reductions of the biogas destroyed in the electricity generators.

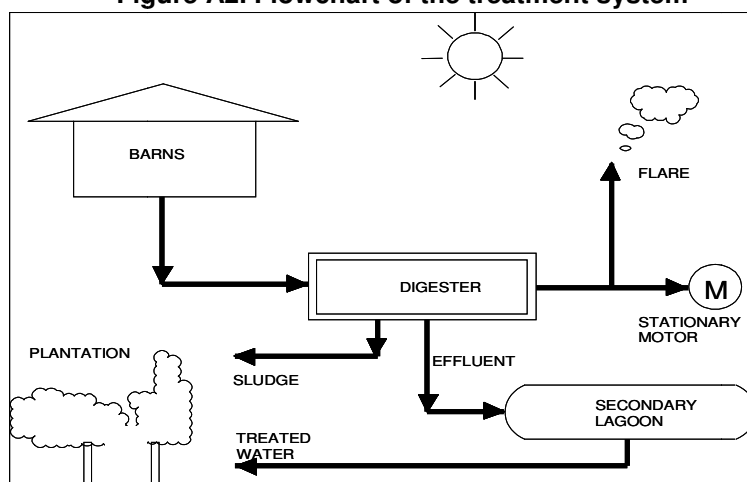
The treated effluent is discharged in the open lagoons, at this moment it is aerated as per the design of the original lagoon system.

The treated water can be then recycled and sent back to the farm purposes, or used for irrigation, in a system that uses biogas pumps or electrical stationary pumps supplied by the biogas electricity generators.

No electricity will be consumed from the grid. The technical parts that will be powered by energy, this energy will come from a solar cell system. The energy will be stored in 12 volts batteries.

The sludge from the digesters will be spread aerobically in the surface of the pasture or plantation as fertiliser in a depth less than 0,30 meters. The sludge will be pumped by a portable biogas pump.

Figure A2. Flowchart of the treatment system

**A.4.1. Location of the small-scale project activity:**

The project is located in central Brazil, at the province of Mato Grosso do Sul state.

A.4.1.1. Host Party(ies):

The host party for this project activity is Brazil.

A.4.1.2. Region/State/Province etc.:

Central Region / State of Mato Grosso do Sul.

A.4.1.3. City/Town/Community etc.:

Cities of Bandeirantes, Rio Verde do Mato Grosso, Dourados, Costa Rica and São Gabriel do Oeste.

A.4.1.4. Details of physical location, including information allowing the unique identification of this small-scale project activity :

The project sites are shown in Figure A3 with specifics detailed in Table A2.

Table A2. Detailed physical location and identification of project site

| Farm / Site | Brascarbon ID | Address | Town / State | Contact | Phone | GPS Coord |
|-------------------------|---------------|------------------------------------|---------------------------|-----------------------|-------------------|------------------------------------|
| Fazenda São Marcos | BCA-140MS1-06 | Rod.BR060 Para Chapadão do Sul | Costa Rica – MS | Michela Brazzale | +55 67 3247-1139 | S 18°47'45" W 53°03'11,7" |
| Granja Rancho Fundo | BCA-092MS1-04 | BR 163, Km 589 – Zona Rural | São Gabriel do Oeste - MS | Silvio Antunes da Luz | + 55 67 9988-9027 | S 19° 31' 55,3" W 54° 24' 10,3" |
| Lote 13 | BCA-093MS1-04 | São Gabriel do Oeste | São Gabriel do Oeste - MS | Armindo Pirovano | +55 67 9964-4563 | S 19° 16' 59" W 54° 38' 16" |
| Fazenda Cachoeira Parte | BCA-096MS1-04 | Estrada Aeroporto - Reta Velha s/n | São Gabriel do Oeste - MS | Wagner Pessato | +55 65 3308-3925 | S 19° 26' 27,7" W 54° 39' 37,8" |

| Farm / Site | Brascarbon ID | Address | Town / State | Contact | Phone | GPS Coord |
|----------------------------------|---------------|--|---------------------------|----------------------------|-------------------|------------------------------------|
| Fazenda CE quinhão A | BCA-104MS1-04 | Estrada Aeroporto - Reta Velha s/n | São Gabriel do Oeste - MS | Valdir Antonio CE | +55 67 3295-2610 | S 19° 32' 10,3" W 54° 35' 18" |
| Lote 29 Assentamento Campanario | BCA-105MS1-04 | BR 163, KM 13 | São Gabriel do Oeste - MS | Felice Valentini | +55 67 3295-1504 | S 19° 16' 52" W 54° 36' 53" |
| Fazenda Nossa Senhora Aparecida | BCA-108MS1-04 | BR 163, KM 650 | Rio Verde do Mato - MS | Jorge Rodrigues | +55 67 9612-4878 | S 19° 09' 03,7" W 54° 45' 57,8" |
| Fazenda Cachoeira | BCA-110MS1-04 | BR 163 Km 609 – Ponto Alto | São Gabriel do Oeste – MS | Jair Antonio Borgmann | +55 67 3295-5031 | S 19° 27' 47,6" W 54° 37' 42,5" |
| Fazenda Capim Branco | BCA-132MS1-04 | BR 163, Km 579 – Zona Rural | São Gabriel do Oeste – MS | Flavio Antonio Venturini | +55 67 3286-1173 | S 19° 39,5' 5,7" W 54° 18' 19,6" |
| Fazenda São Sebastião - Gleba05 | BCA-135MS1-04 | BR 163 - Estrada para Camapuã | Bandeirantes - MS | Creusa Moreira Batista | +55 67 9922- 5755 | S 19° 42' 17" W 54° 20' 7,6" |
| Fazenda São Sebastião - Gleba06 | BCA-136MS1-04 | BR 163 - Estrada para Camapuã | Bandeirantes - MS | Maria Inês Caviglioni | +55 67 3351-5265 | S 19° 42' 30" W 54° 20' 16,5" |
| Lote 88 Assentamento Campanario | BCA-142MS1-04 | Assentamento Campanario | São Gabriel do Oeste – MS | Fredolino Rolim | +55 67 9995-2072 | S 19° 16,01' 01,2" W 54° 34' 57,7" |
| Granja Potreirito | BCA-165MS1-04 | Estrada Geral Potreirito KM-8 | Dourados – MS | Adriano Piasieski | +55 67 3424- 0759 | S 22° 17' 11,0" W 54° 41' 38,0" |
| Granja Arco-Íris – Laranja Azeda | BCA-170MS1-06 | Faz. Laranja Azeda - Distrito de Vl. Formosa | Dourados – MS | Milton Insuela Pereira Jr. | +55 67 3424-0739 | S 22° 02' 22,0" W 54° 27' 44,8" |
| Fazenda Santa Cecilia | BCA-029MS1-04 | BR 163 - sentido coxim | São Gabriel do Oeste – MS | Cezar Lodea | +55 67 3295-3638 | S 19° 14' 23,4" W 54° 29' 59,3" |

Michela Brazale has one site in Costa Rica city:

- Fazenda São Marcos is a farrow-to-finish swine operation. The site uses two primaries open lagoons for animal waste storage. Waste from the barns is removed via the pull plug method and then routed to the open lagoon. The methods of effluent disposition used are surface spread and irrigation.

Silvio Antunes da Luz has one site in São Gabriel do Oeste city:

- Granja Rancho Fundo is a finishing swine operation. The site uses two primaries open lagoons for animal waste storage. Waste from the barns is removed via the pull plug method and then routed to the open lagoon. The methods of effluent disposition used are surface spread and irrigation.

Armindo Pirovano has one site in São Gabriel do Oeste city:

- Lote 13 is a finishing swine operation. The site uses two primaries open lagoons for animal waste storage. Waste from the barns is removed via the pull plug method and then routed to the open lagoon. The methods of effluent disposition used are surface spread and irrigation.

Wagner Pessato has one site in São Gabriel do Oeste city:

- Fazenda Cachoeira Parte is a finishing swine operation. The site uses two primaries open lagoons for animal waste storage. Waste from the barns is removed via the pull plug method and then routed to the open lagoon. The methods of effluent disposition used are surface spread and irrigation.

Valdir Antonio CE has one site in São Gabriel do Oeste city:

- Fazenda CE Quinhão is a finishing swine operation. The site uses two primaries open lagoons for animal waste storage. Waste from the barns is removed via the pull plug method and then routed to the open lagoon. The methods of effluent disposition used are surface spread and irrigation.

Felice Valentini has one site in São Gabriel do Oeste city:

- Lote 29 is a finishing swine operation. The site uses two primaries open lagoons for animal waste storage. Waste from the barns is removed via the pull plug method and then routed to the open lagoon. The methods of effluent disposition used are surface spread and irrigation.

Jorge Rodrigues has one site in Rio Verde do Mato city:

- Fazenda Nossa Senhora Aparecida is a finishing swine operation. The site uses two primaries open lagoons for animal waste storage. Waste from the barns is removed via the pull plug method and then routed to the open lagoon. The methods of effluent disposition used are surface spread and irrigation.

Jair Antonio Borgmann has one site in São Gabriel do Oeste city:

- Fazenda Cachoeira is a finishing swine operation. The site uses two primaries open lagoons for animal waste storage. Waste from the barns is removed via the pull plug method and then routed to the open lagoon. The methods of effluent disposition used are surface spread and irrigation.

Flavio Antonio Venturini has one site in São Gabriel do Oeste city:

- Fazenda Capim Branco is a finishing swine operation. The site uses two primaries open lagoons for animal waste storage. Waste from the barns is removed via the pull plug method and then routed to the open lagoon. The methods of effluent disposition used are surface spread and irrigation.

Creusa Moreira Batista has one site in Bandeirantes city:

- Fazenda São Sebastião – Gleba 05 is a finishing swine operation. The site uses two primaries open lagoons for animal waste storage. Waste from the barns is removed via the pull plug method and then routed to the open lagoon. The methods of effluent disposition used are surface spread and irrigation.

Maria Inês Caviglioni has one site in Bandeirantes city:

- Fazenda São Sebastião – Gleba 06 is a finishing swine operation. The site uses two primaries open lagoons for animal waste storage. Waste from the barns is removed via the pull plug method and then routed to the open lagoon. The methods of effluent disposition used are surface spread and irrigation.

Fredolino Rolim has one site in São Gabriel do Oeste city:

- Lote 88 is a finishing swine operation. The site uses two primaries open lagoons for animal waste storage. Waste from the barns is removed via the pull plug method and then routed to the open lagoon. The methods of effluent disposition used are surface spread and irrigation.

Adriano Carlos Piaseski has one site in Dourados city:

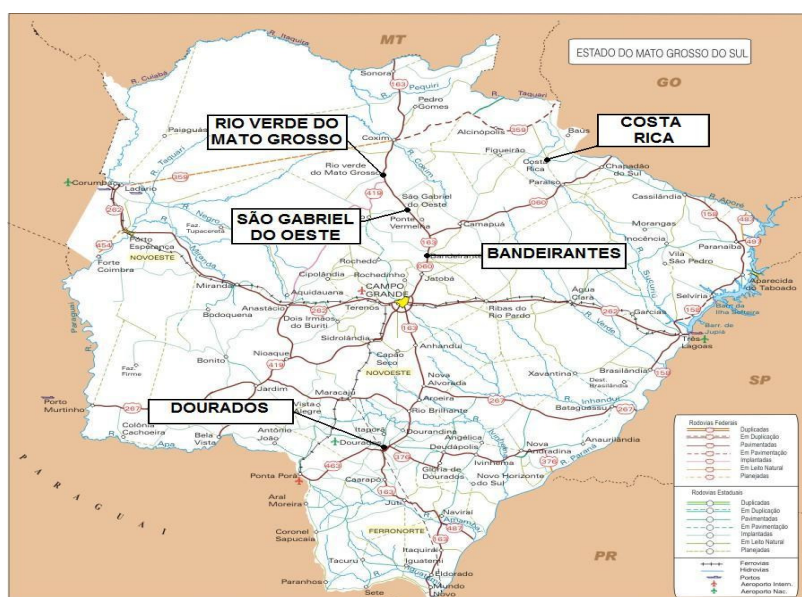
- Granja Potreirito is a farrow-to-finish swine operation. The site uses two primaries open lagoons for animal waste storage. Waste from the barns is removed via the pull plug method and then routed to the open lagoon. The methods of effluent disposition used are surface spread and irrigation

Milton Insuela Pereira Junior has one site in Dourados city:

- Granja Arco-Íris – Fazenda Laranja Azeda is a finishing swine operation. The site uses two primaries open lagoons for animal waste storage. Waste from the barns is removed via the pull plug method and then routed to the open lagoon. The methods of effluent disposition used are surface spread and irrigation.

Cezar Lodea has one site in São Gabriel do Oeste city:

- Fazenda Santa Cecilia is a farrow-to-finish swine operation. The site uses two primaries open lagoons for animal waste storage. Waste from the barns is removed via the pull plug method and then routed to the open lagoon. The methods of effluent disposition used are surface spread and irrigation

Figure A3 State of Mato Grosso do Sul, Brazil - Location of project sites**A.4.2. Type and category (ies) and technology/measure of the small-scale project activity:**

The project activity is a Type III.

The project is a small scale project because it comprises methane recovery from agro-industries, and project emissions are less than 60 kt CO₂eq.

- Type III.D (reference AMS-III.D) / Version 15 – “*Methane recovery in animal manure management systems*”.

The simplified methodology is appropriate because the project activity site is considered an agro-industry and GHG emissions calculations can be estimated using internationally accepted IPCC 2006 guidance.

The project activity will capture and combust methane gas produced in the decomposing manure at swine confined animal feed operation located in Mato Grosso do Sul state, Brazil. This simplified baseline methodology is applicable to this project activity since without the proposed project activity, methane from the existing animal waste management system would continue to be emitted into the atmosphere.

A.4.3 Estimated amount of emission reductions over the chosen crediting period:

THE TOTAL ESTIMATE OF EMISSIONS REDUCTIONS OVER THE 7 YEARS PROJECT PERIOD

Table A3. Total estimated reductions per year.

| Years | Annual estimation of emission reductions in tonnes of CO ₂ e |
|--|--|
| 2011 | 53,462 |
| 2012 | 53,462 |
| 2013 | 53,462 |
| 2014 | 53,462 |
| 2015 | 53,462 |
| 2016 | 53,462 |
| 2017 | 53,462 |
| Total estimated reductions (tonnes of CO₂e) | 374,234 |
| Total number of crediting years | 7 |
| Annual average over the crediting period of estimated reductions (tonnes of CO ₂ e) | 53,462 |

A.4.4. Public funding of the small-scale project activity:

There is no official development assistance being provided for this project.

A.4.5. Confirmation that the small-scale project activity is not a de-bundled component of a large scale project activity:

Based on paragraph 2 of Appendix C of the Simplified Modalities and Procedures for Small-Scale CDM project activities⁷, this project is not de-bundled. There are no other registered small-scale CDM project activities with the same project participants, in the same project category and technology whose project boundary is within 1 km of another proposed small-scale activity.

⁷ <http://cdm.unfccc.int/Projects/pac/howto/SmallScalePA/sscdebund.pdf>

SECTION B. Application of a baseline and monitoring methodology**B.1. Title and reference of the approved baseline and monitoring methodology applied to the small-scale project activity:**

The approved baseline and monitoring methodology is:

- Type III.D (reference AMS-III.D) / Version 15 – “*Methane recovery in animal manure management systems*”.
- EB 28 Meeting Report – Annex 13 ”Tool to determine project emissions from flaring gases containing methane”.

B.2 Justification of the choice of the project category:

The simplified methodologies are appropriate because the project activity site is considered an agro-industry and GHG emissions calculations can be estimated using internationally accepted IPCC guidance. The project activity will capture and combust methane gas produced from the decomposing manure at swine Confined Animals Feed Operations located in Mato Grosso do Sul state, Brazil. This simplified baseline methodology is applicable to this project activity because:

- a) The livestock population in the farm is managed under confined conditions:
All farms included in this project activity are managed under confined conditions confirmed by the obligatory environmental licenses whose document releases the Confined Animals Feed Operation business. The environmental licenses can be found at Brascarbon and it's available for validation and verification.
- b) The manure, after treatment, will not be discharged into natural water resources:
The environmental legislation does not approve any manure or manure after treatment discharging into the natural water resources. Before releasing the environmental licenses by the Environmental Department, the Confined Animal Feed Operation activity is checked to confirm that all effluent after treatment is not discharged into the natural water resources. According item a) above, the environmental licenses can be found at Brascarbon an available for validation and verification.
- c) The annual average temperature of baseline site where anaerobic manure treatment facility is located is higher than 5°C:
The annual average temperature verified in city of reference to the Mato Grosso do Sul state is 23-25°C, so higher than the methodology provides: 5°C. This information can be verified through on INPE (National Institute of Space Research) web site. This information is available for validation and verification.
- d) In the baseline scenario the anaerobic lagoons have depths which are at least 1 m:
The retention time of waste in open anaerobic open lagoons has proven to be more than 1 month as recommended by EMBRAPA (from 30 to 40 days)⁸. The depth was higher than 1 meter, and has been verified by measurements taken on each farm. This information is available for validation and verification.

⁸ http://www.cnpsa.embrapa.br/down.php?tipo=publicacoes&cod_publicacao=186

- e) No methane recovery and destruction by flaring, combustion or gainful use takes place in the baseline scenario:

The baseline scenario for all farms in this PDD is making of a Confined Animal Feed Operation with open anaerobic lagoons for the manure treatment system. Any methane recovery and destruction by flaring, combustion or gainful use which can be verified in each farm during validation.

The project will also satisfy the following conditions:

- a) The final sludge will be handled aerobically. It will be applied in the soil, according with the proper conditions and procedures, being assured that no methane emissions are resulting from this application:

The project involves the use of treated effluent for irrigation in farms and application of stabilized sludge on crops irrigation in farms, without any anaerobic conditions. The practice is to distribute the sludge over the field according the usual practice to improve the field fertilization.

- b) Technical measures will be used ensuring that all biogas produced by the digester is used or flared:

All biogas produced by the digester will be flared. An enclosed flare will be used in the project and also sized to support high temperatures. A continuous sparking system is installed in the combustion chamber of the flare. There is only one deviation proposed in the biogas pipeline from the digester to the flare, blocked with a weld cap, for biogas use in generators (further definition). Only one pipe from digester to flare will be installed. Any other additional biogas pipe will be installed in the digester.

Also the PVC digester cover is sealed in the concrete frame and fixed with bolts in a stainless steel plate to prevent any biogas leakage.

- c) The storage time of the manure after removal from the animal barns, including transportation, will not exceed 24 hours before being fed into the anaerobic digester: This situation is assured due to the common farms practices where each day all the manure is washed and sent to the digester. The Confined Animal Feed Operation Practices follows recommendations from EMBRAPA (Empresa Brasileira de Agricultura e Agropecuária) to get high standards of sanitary conditions in the confined operations. These recommendations can be found at EMBRAPA web site where all producers use as a guideline.

Also, the project is a small scale project because it comprises methane recovery from agro-industries, and project emissions are less than 60 kt CO₂eq.

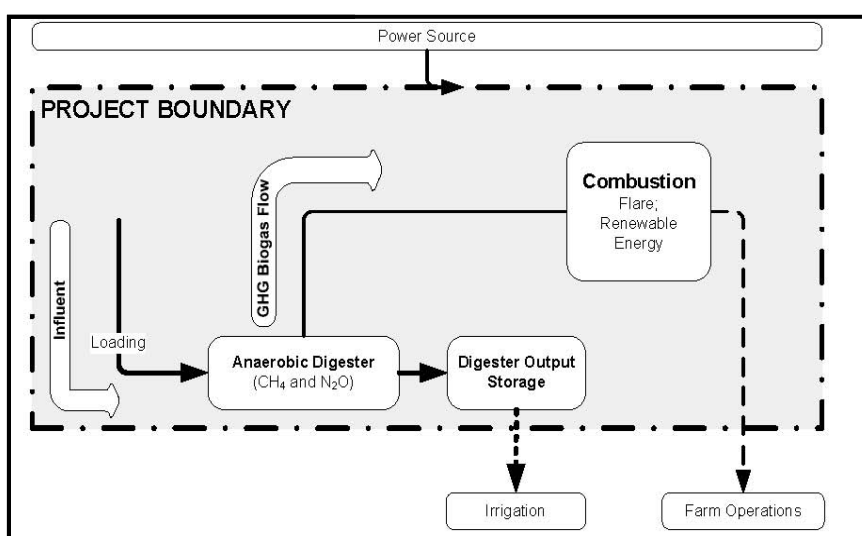
The starting date for this activity is expected on 18/01/2010 where Brascarbon will commit expenditures after signing the first site construction contract which will be available for validation and verification. The project activity schedule was prepared considering all steps of the project development and construction and it's available for review.

B.3. Description of the project boundary:

The project boundary is illustrated in Figure B1. It describes the basic layout of the project farm in a schematic format. The proposed project boundary considers the GHG emissions that come from the animal waste practices, including the GHG resulting from the capture and combustion of biogas. The project activity site uses a system of one or more lagoons.

The proposed animal waste management system practice changes include the construction of a digester comprised of cells that capture the resulting biogas which is then combusted. Based on the methodology, the anaerobic digester is the physical boundary of the methane recovery facility.

Figure B1 - Project Boundary

**B.4. Description of baseline and its development:**

This section is based on the equations used on the approved methodology AMS.III.D version 15 and data from 2006 IPCC, volume 4, chapter 10.

The amount of methane that would be emitted to the atmosphere in the absence of the project activity can be estimated by referring to the equation B1 – Baseline emissions from manure management, according to the methodology AMS.III.D – version 15.

The final draft of this baseline section was completed on 31/03/2009. The name of entity determining the baseline is Brascarbon. Brascarbon is a project participant, as well as the project developer.

The baseline for this project activity is defined as the amount of methane that would be emitted to the atmosphere during the crediting period in the absence of the project activity. In this case an open anaerobic lagoon is considered the baseline and estimated emissions are determined as follows:

Step 1 – Animal Population

Animal populations for the project activity sites are described in this section Table B2.

Step 2 – Baseline Emissions**Equation B1**

$$BE_y = GWP_{CH_4} * D_{CH_4} * UFB * \sum MCF_j * B_{0,LT} * N_{LT,y} * VS_{LT,y} * MS\%_{Bl,j}$$

Where:

| | |
|---------------|---|
| BE_y | Baseline emissions in year “y” (tCO ₂ e) |
| GWP_{CH_4} | Global Warming Potential (GWP) of CH ₄ (21) |
| D_{CH_4} | CH ₄ density (0.00067 t/m ³ at room temperature (20 °C) and 1 atm pressure). |
| LT | Index for all types of livestock |
| j | Index for animal waste management system |
| MCF_j | Annual methane conversion factor (MCF) for the baseline animal waste management system “j” |
| $B_{0,LT}$ | Maximum methane producing potential of the volatile solid generated for animal type “LT” (m ³ CH ₄ /kg dm) |
| $N_{LT,y}$ | Annual average number of animals of type “LT” in year “y” (numbers) |
| $VS_{LT,y}$ | Volatile solids for livestock “LT” entering the animal manure management system in year “y” (on a dry matter weight basis, kg dm/animal/year) |
| $MS\%_{Bl,j}$ | Fraction of manure handled in baseline animal manure management system “j” |
| UF_b | Model correction factor to account for model uncertainties (0.94) ₁ |

Where:

(A) $VS_{LT,y}$ can be determinate by scaling default IPCC values to adjust for a site-specific average animal weight.

Equation B2

$$VS_{LT,y} = \left(\frac{W_{site}}{W_{default}} \right) * VS_{default} * nd_y$$

Where:

| | |
|----------------|---|
| W_{site} | Average animal weight of a defined livestock population at the project site (kg) |
| $W_{default}$ | Default average animal weight of a defined population, this data is sourced from IPCC 2006 (kg) |
| $VS_{default}$ | Default value for the volatile solid excretion rate per day on a dry-matter basis for a defined livestock population (kg dm/animal/day) |
| nd_y | Number of days in year “y” where the treatment plant was operational. |

And,

(B) $N_{LT,y}$, the annual average number of animals can be determinate as follows:

Equation B3

$$N_{LT,y} = N_{da,y} * (N_{p,y}/365)$$

Where:

$N_{da,y}$ Number of days animal is alive in the farm in the year “y” (numbers)

$N_{p,y}$ Number of animals produced annually of type “LT” for the year “y” (numbers)

Table B1 - Parameters and factors for the applying baseline equations.

| Parameter/Factor | Value | Source/Comment |
|-----------------------|----------------------------------|--|
| Baseline | | |
| VS_{default} | Annex 3 | Obtained from IPCC2006, vol 4, chapter 10, Tables 10A-7 and 10A-8. |
| GWP_{CH_4} | 21 | Intergovernmental Panel on Climate Change, <i>Climate Change 1995: The Science of Climate Change</i> (Cambridge, UK: Cambridge University Press, 1996) |
| $B_{0,LT}$ | 0.45 | Obtained from 2006 IPCC, Table 10A-7, p.10.80 and Table 10A-8, p.10.81. |
| D_{CH_4} | 0.00067 | CH ₄ density at room temperature 20°C and 1 atm pressure. |
| MCF_J | 79% | Obtained from 2006 IPCC, Chp.10 vol 4 - Table 10.17, p.10.45 |
| $N_{LT,y}$ | Table B2 | Annual average number of animals of type “LT” in year “y”(numbers) |
| $MS\%_{Bl,i}$ | 100% | Fraction of manure handled in system “j”. |
| W_{default} | 198 kg breeding and 50 kg market | Obtained from IPCC2006, vol 4, chapter 10, Tables 10A-7 and 10A-8. |
| UF_B | 0.94 | Model correction factor to account for model uncertainties. |

Table B2 - Parameters and factors for the specific animal category

| ID | Farm/Site | Annual Average Number of Animals of Type LT in year y - $N_{LT,y}$ | | | | | Total |
|--------------|--|--|---------------|-----------------|-----------|------------|---------------|
| | | Sows | Finishers | Nursery/Weaners | Boars | Gilts | |
| 1 | Fazenda São Marcos | 800 | 5,016 | 3,405 | 8 | 240 | 9,469 |
| 2 | Granja Rancho Fundo | - | 4,438 | - | - | - | 4,438 |
| 3 | Lote 13 | - | 4,755 | - | - | - | 4,755 |
| 4 | Fazenda Cachoeira Parte | - | 4,438 | - | - | - | 4,438 |
| 5 | Fazenda CE Quinhão A | - | 4,755 | - | - | - | 4,755 |
| 6 | Lote 29 Assentamento Campanário | - | 4,358 | - | - | - | 4,358 |
| 7 | Fazenda Nossa Senhora Aparecida | - | 4,358 | - | - | - | 4,358 |
| 8 | Fazenda Cachoeira | - | 4,358 | - | - | - | 4,358 |
| 9 | Fazenda Capim Branco | - | 4,358 | - | - | - | 4,358 |
| 10 | Faz São Sebastião - G 05 | - | 2,034 | - | - | - | 2,034 |
| 11 | Faz. São Sebastião - G 06 | - | 2,219 | - | - | - | 2,219 |
| 12 | Assentamento Campanário - Lote 88 | - | 2,237 | - | - | - | 2,237 |
| 13 | Granja Potreirito | 2,000 | 12,538 | 9,457 | 20 | 600 | 24,616 |
| 14 | Granja Arco -Íris - Faz. Laranja Azeda | - | 7,322 | - | - | - | 7,322 |
| 15 | Fazenda Santa Cecília | 200 | 1,254 | 946 | 6 | 60 | 2,466 |
| TOTAL | | 3,000 | 68,437 | 13,808 | 34 | 900 | 86,179 |

B.5. Description of how the anthropogenic emissions of GHG by sources are reduced below those that would have occurred in the absence of the registered small-scale CDM project activity:

Proof of an early consideration of CDM is available, as the contract between the project developer (Brascarbon) and the carbon credit buyer (Luso Carbon Fund) was signed before than the starting date, on June 2007 (document is also available for review). Furthermore, the contract between the project developer and the owner of the pig farms specifically mentions the project implementation under the context of CDM. After the starting date of the project activity and until the PDD started validation (September 2009), the project developer finalized and signed the contracts with the other owners of pig farms/project sites, elaborated the PDD and contracted the DOE for validation.

In absence of this project activity, the swine producers would not change their animal waste management system practices. They have no motivations or financial resources to implement a different waste treatment as open anaerobic lagoons.

The swine waste storage and treatment systems in Brazil consists in open tanks, open digesting process and ponds (anaerobic, variable and aerobic), due to the most economic and viable system approved to manage the manure in confined animal feed operations. Also, the approved waste treatment used in the farms involves less technology, as open lagoons, and need less employees and technicians for operation and maintenance.

Economic barriers are very common in the confine animals feed operations because producers invest only in the confined feed operations to be more competitive in the market. Financial resources are always used to maintain the confined feed operation working. This is one of the reasons of the additionality of the project activity.

The proposed project activity intends to improve current animal waste management system practices. These changes will result in the mitigation of anthropogenic GHG emissions by controlling the lagoon's decomposition processes and collecting and combusting the biogas. Also the proposed project activity will be sized to accommodate each farm's maximum expected animal capacity.

In accordance with paragraph 28 of the simplified modalities and procedures for small-scale CDM project activities, a simplified baseline and monitoring methodology listed in Appendix B may be used if project participants can demonstrate that the project activity would otherwise not be implemented due to the existence of one or more barrier(s) listed in attachment A of Appendix B. Similarly, for the identified CDM project, following barriers have been overcome during project planning and execution:

Investment Barrier:

In the economic point of view, Brazilian pork producers face the same challenges as farmers in other nations due to the growth worldwide pork production and low operating margins. Farm owners focus on the bottom line, and odour benefits, alleged water quality enhancements, and the potential incremental savings associated with electricity cost avoidance, are rarely enough to compel an upgrade to an (expensive) advanced animal waste management system.

Also, in the producer's point of view the animal waste is outside of the production process and has difficulty financing changes that should be undertaken. Even banks have been unwilling to finance such activities absent government guarantees or other incentives.

The anaerobic digester requires a much higher investment, it can be assumed that the anaerobic lagoon, usually requires less investment, is the most likely alternative and therefore can be considered the baseline scenario.

To demonstrate the existence of an investment barrier, that foresee the implementation of the project without the revenue of the carbon credits, the project proponent has undertaken an economic sensitive analysis of the project activity (without the revenue of the carbon credits), considering three different scenarios: first, only the installation of the anaerobic digester plus flare is being considered; second, the installation of both an anaerobic digester plus flare and a generator are being considered and assuming that all farms will start to produce electricity in 2011 (using a standard generator with installed capacity of 40KW, to produce energy during 12 hours/day, consuming 100% of the biogas produced, only for farm activities proposals, without connection to the grid for further energy commercialization); and third, the installation of the anaerobic lagoon, as usual in the baseline scenario.

In all scenarios the Internal Return Rate (IRR) cannot be calculated hence the analysis is based on the NPV, using the discount rate of 10,77% - Brazilian bonds (taxa SELIC - <http://www.bcb.gov.br/>), in 21 years.

At the first scenario, table B 2.1, there is only negatives cash flows, as no revenue will be expected from the implementation of the project activity.

In the following table illustrates that there is no positive cash flow scenario involved in the project activity therefore there is an investment barrier that prevents the implementation of the project activity.

Considering the analysis undertaken, it is determined that the project is “additional” from an economic perspective, as it is only viable with the revenues of the carbon credits.

Brascarbon decided to make the NPV calculation considering 21 years as the period of the project, that is the maximum period of the Small Scale project life cycle, instead of what is mentioned in the Annex 45 of the EB 41 (max period 20 years).

Table B 2.1 – NPV and IRR calculation (digester + flare, operation lifetime of the project: 21 years)

| ID | FARM/SITE | Equipment costs (digester and flare) | Installation costs | Other costs (operation, consultancy, engineering, etc.) | Maintenance costs | | | Revenues from the sale of electricity or other project related products, when applicable | | | TOTAL | NPV (US\$) (10,77% discount rate) | IRR (%) |
|----|---|---|--------------------|--|-------------------|------------|------------|--|--------|----------|-------------|--------------------------------------|-----------|
| | | | | | 2011 | year n | year n+1 | 2011 | year n | year n+1 | | | |
| 1 | Fazenda São Marcos | -54,900 | -10,980 | 0,00 | -15,600,00 | -15,600,00 | -15,600,00 | 0,00 | 0,00 | 0,00 | -81,480,00 | -171,618 | UNDEFINED |
| 2 | Granja Rancho Fundo | -45,900 | -9,180 | 0,00 | -15,600,00 | -15,600,00 | -15,600,00 | 0,00 | 0,00 | 0,00 | -70,680,12 | -162,032 | UNDEFINED |
| 3 | Lote 13 | -45,900 | -9,180 | 0,00 | -15,600,00 | -15,600,00 | -15,600,00 | 0,00 | 0,00 | 0,00 | -70,680,33 | -162,032 | UNDEFINED |
| 4 | Fazenda Cachoeira Parte | -45,900 | -9,180 | 0,00 | -15,600,00 | -15,600,00 | -15,600,00 | 0,00 | 0,00 | 0,00 | -70,680,12 | -162,032 | UNDEFINED |
| 5 | Fazenda CE Quinhão A | -45,900 | -9,180 | 0,00 | -15,600,00 | -15,600,00 | -15,600,00 | 0,00 | 0,00 | 0,00 | -70,680,12 | -162,032 | UNDEFINED |
| 6 | Lote 29 Assentamento Campanário | -45,900 | -9,180 | 0,00 | -15,600,00 | -15,600,00 | -15,600,00 | 0,00 | 0,00 | 0,00 | -70,680,33 | -162,032 | UNDEFINED |
| 7 | Fazenda Nossa Senhora Aparecida | -38,900 | -7,780 | 0,00 | -15,600,00 | -15,600,00 | -15,600,00 | 0,00 | 0,00 | 0,00 | -62,280,33 | -154,576 | UNDEFINED |
| 8 | Fazenda Cachoeira | -45,900 | -9,180 | 0,00 | -15,600,00 | -15,600,00 | -15,600,00 | 0,00 | 0,00 | 0,00 | -70,680,12 | -162,032 | UNDEFINED |
| 9 | Fazenda Capim Branco | -45,900 | -9,180 | 0,00 | -15,600,00 | -15,600,00 | -15,600,00 | 0,00 | 0,00 | 0,00 | -70,680,33 | -162,032 | UNDEFINED |
| 10 | Faz São Sebastião - G 05 | -39,500 | -7,900 | 0,00 | -15,600,00 | -15,600,00 | -15,600,00 | 0,00 | 0,00 | 0,00 | -63,000,19 | -155,215 | UNDEFINED |
| 11 | Faz. São Sebastião - G 06 | -45,900 | -9,180 | 0,00 | -15,600,00 | -15,600,00 | -15,600,00 | 0,00 | 0,00 | 0,00 | -70,680,49 | -162,032 | UNDEFINED |
| 12 | Assento Campanário - Lote 88 | -45,900 | -9,180 | 0,00 | -15,600,00 | -15,600,00 | -15,600,00 | 0,00 | 0,00 | 0,00 | -70,680,45 | -162,032 | UNDEFINED |
| 13 | Granja Potreirito | -70,530 | -14,106 | 0,00 | -15,600,00 | -15,600,00 | -15,600,00 | 0,00 | 0,00 | 0,00 | -100,236,28 | -188,267 | UNDEFINED |
| 14 | Granja Arco - Íris - Faz. Laranja Azeda | -53,200 | -10,640 | 0,00 | -15,600,00 | -15,600,00 | -15,600,00 | 0,00 | 0,00 | 0,00 | -79,440,37 | -169,808 | UNDEFINED |
| 15 | Fazenda Santa Cecilia | -42,760 | -8,552 | 0,00 | -15,600,00 | -15,600,00 | -15,600,00 | 0,00 | 0,00 | 0,00 | -66,912,18 | -158,687 | UNDEFINED |



In the second scenario, table B 2.2, considered electricity generation and anaerobic digester plus flare installation, although the project activity generates positive returns from the avoided costs of the electricity purchase, the yearly cash-flows are always negative, as the electricity avoided cost is not enough to offset the maintenance costs of the anaerobic digester and the generator.

The NPV of the project activity is negative. It is assumed that the farms would implement a 40KW standard generator, which would produce electricity 12 hours per day (to guarantee farm needs) consuming 100% of the biogas produced during the operation.

The revenue adopted in this model was considered the energy cost savings by the use of the biogas generator. The energy generation is directly to the user. Selling energy was not considered due the internal difficulties for grid connection for such amount of energy produced. Once again, there is an investment barrier that prevents the implementation of the project activity.

Considering the analysis undertaken, it is determined that the project is “additional” from an economic perspective, as it is only viable with the revenues of the carbon credits.

Table B 2.2. NPV and IRR calculation (Digester plus Flare and electricity generator, operation lifetime of the project: 21 years)

| ID | FARM/SITE | Equipment costs (digester, flare, generator) | Installation costs | Other costs (operation, consultancy, engineering, etc.) | Maintenance costs | | | Revenues from electricity savings due the on site energy production (during 12 hours/day in year)(*) | | | TOTAL | NPV (US\$) (10,77% discount rate) | IRR (%) |
|----|---|---|--------------------|--|-------------------|---------|----------|--|--------|----------|----------|--------------------------------------|-----------|
| | | | | | 2011 | year n | year n+1 | 2011 | year n | year n+1 | | | |
| 1 | Fazenda São Marcos | -84,400 | -40,980 | 0 | -23,140 | -23,140 | -23,140 | 14,761 | 14,761 | 14,761 | -133,759 | -172,062 | UNDEFINED |
| 2 | Granja Rancho Fundo | -75,400 | -39,180 | 0 | -23,140 | -23,140 | -23,140 | 14,761 | 14,761 | 14,761 | -122,959 | -162,476 | UNDEFINED |
| 3 | Lote 13 | -75,400 | -39,180 | 0 | -23,140 | -23,140 | -23,140 | 14,761 | 14,761 | 14,761 | -122,960 | -162,476 | UNDEFINED |
| 4 | Fazenda Cachoeira Parte | -75,400 | -39,180 | 0 | -23,140 | -23,140 | -23,140 | 14,761 | 14,761 | 14,761 | -122,959 | -162,476 | UNDEFINED |
| 5 | Fazenda CE Quinhão A | -75,400 | -39,180 | 0 | -23,140 | -23,140 | -23,140 | 14,761 | 14,761 | 14,761 | -122,959 | -162,476 | UNDEFINED |
| 6 | Lote 29 Assentamento Campanário | -75,400 | -39,180 | 0 | -23,140 | -23,140 | -23,140 | 14,761 | 14,761 | 14,761 | -122,960 | -162,476 | UNDEFINED |
| 7 | Fazenda Nossa Senhora Aparecida | -68,400 | -37,780 | 0 | -23,140 | -23,140 | -23,140 | 14,761 | 14,761 | 14,761 | -114,560 | -155,020 | UNDEFINED |
| 8 | Fazenda Cachoeira | -75,400 | -39,180 | 0 | -23,140 | -23,140 | -23,140 | 14,761 | 14,761 | 14,761 | -122,959 | -162,476 | UNDEFINED |
| 9 | Fazenda Capim Branco | -75,400 | -39,180 | 0 | -23,140 | -23,140 | -23,140 | 14,761 | 14,761 | 14,761 | -122,960 | -162,476 | UNDEFINED |
| 10 | Faz São Sebastião - G 05 | -69,000 | -37,900 | 0 | -22,500 | -22,500 | -22,500 | 14,761 | 14,761 | 14,761 | -114,640 | -151,017 | UNDEFINED |
| 11 | Faz. São Sebastião - G 06 | -75,401 | -39,180 | 0 | -23,140 | -23,140 | -23,140 | 14,761 | 14,761 | 14,761 | -122,960 | -162,476 | UNDEFINED |
| 12 | Assentamento Campanário - Lote 88 | -75,401 | -39,180 | 0 | -22,440 | -22,440 | -22,440 | 14,761 | 14,761 | 14,761 | -122,260 | -157,399 | UNDEFINED |
| 13 | Granja Potreirito | -100,030 | -44,106 | 0 | -33,170 | -33,170 | -33,170 | 14,761 | 14,761 | 14,761 | -162,546 | -261,454 | UNDEFINED |
| 14 | Granja Arco - Íris - Faz. Laranja Azeda | -82,701 | -40,640 | 0 | -22,440 | -22,440 | -22,440 | 14,761 | 14,761 | 14,761 | -131,020 | -165,175 | UNDEFINED |
| 15 | Fazenda Santa Cecilia | -72,260 | -38,552 | 0 | -23,140 | -23,140 | -23,140 | 14,761 | 14,761 | 14,761 | -119,192 | -159,131 | UNDEFINED |

(*) consumed 100 % of the biogas produced during the operation

The third scenario, which considers the installation of the open anaerobic lagoons (baseline scenario), is usually installed due the most economic option to the swine producers. The table B 2.3, considered the installation of the open anaerobic lagoon and a less cost for maintenance, comparing with the 1st and 2nd options, because there is less technology involved.

Although the third option is the favorable economic option, the yearly cash-flows are always negative. The NPV of this scenario is also negative.

Table B 2.3. NPV and IRR calculation (Open Lagoon, operation lifetime of the project: 21 years)

| ID | FARM/SITE | Equipment costs (anaerobic open lagoon) | Installation costs | Other costs (operation, consultancy, engineering, etc.) | Maintenance costs | | | Revenues from the sale of electricity or other project related products, when applicable | | | TOTAL | NPV (US\$) (10,77% discount rate) | IRR (%) |
|----|---|--|--------------------|--|-------------------|--------|----------|--|--------|----------|---------|--------------------------------------|-----------|
| | | | | | 2011 | year n | year n+1 | 2011 | year n | year n+1 | | | |
| 1 | Fazenda São Marcos | -41,043 | -3,803 | 0 | -1,000 | -1,000 | -1,000 | 0 | 0 | 0 | -45,846 | -47,059 | UNDEFINED |
| 2 | Granja Rancho Fundo | -17,847 | -1,635 | 0 | -1,000 | -1,000 | -1,000 | 0 | 0 | 0 | -20,482 | -24,545 | UNDEFINED |
| 3 | Lote 13 | -23,403 | -2,391 | 0 | -1,000 | -1,000 | -1,000 | 0 | 0 | 0 | -26,793 | -30,148 | UNDEFINED |
| 4 | Fazenda Cachoeira Parte | -17,847 | -1,635 | 0 | -1,000 | -1,000 | -1,000 | 0 | 0 | 0 | -20,482 | -24,545 | UNDEFINED |
| 5 | Fazenda CE Quinhão A | -17,847 | -1,635 | 0 | -1,000 | -1,000 | -1,000 | 0 | 0 | 0 | -20,482 | -24,545 | UNDEFINED |
| 6 | Lote 29 Assentamento Campanário | -23,403 | -2,391 | 0 | -1,000 | -1,000 | -1,000 | 0 | 0 | 0 | -26,793 | -30,148 | UNDEFINED |
| 7 | Fazenda Nossa Senhora Aparecida | -23,403 | -2,391 | 0 | -1,000 | -1,000 | -1,000 | 0 | 0 | 0 | -26,793 | -30,148 | UNDEFINED |
| 8 | Fazenda Cachoeira | -17,847 | -1,635 | 0 | -1,000 | -1,000 | -1,000 | 0 | 0 | 0 | -20,482 | -24,545 | UNDEFINED |
| 9 | Fazenda Capim Branco | -23,403 | -2,391 | 0 | -1,000 | -1,000 | -1,000 | 0 | 0 | 0 | -26,793 | -30,148 | UNDEFINED |
| 10 | Faz São Sebastião - G 05 | -11,048 | -1,166 | 0 | -1,000 | -1,000 | -1,000 | 0 | 0 | 0 | -13,214 | -18,094 | UNDEFINED |
| 11 | Faz. São Sebastião - G 06 | -11,048 | -1,166 | 0 | -1,000 | -1,000 | -1,000 | 0 | 0 | 0 | -13,214 | -18,094 | UNDEFINED |
| 12 | Assentamento Campanário - Lote 88 | -13,427 | -1,451 | 0 | -1,000 | -1,000 | -1,000 | 0 | 0 | 0 | -15,877 | -20,458 | UNDEFINED |
| 13 | Granja Potreirito | -69,117 | -4,960 | 0 | -1,000 | -1,000 | -1,000 | 0 | 0 | 0 | -75,076 | -73,005 | UNDEFINED |
| 14 | Granja Arco - Íris - Faz. Laranja Azeda | -27,795 | -2,423 | 0 | -1,000 | -1,000 | -1,000 | 0 | 0 | 0 | -31,217 | -34,074 | UNDEFINED |
| 15 | Fazenda Santa Cecília | -13,368 | -1,451 | 0 | -1,000 | -1,000 | -1,000 | 0 | 0 | 0 | -15,819 | -20,406 | UNDEFINED |

Once again, there is also an investment barrier that prevents the implementation of the installation of the anaerobic open lagoon, but it is the option approved by the environment department to the waste management system to the confined feed animal operation.

The negative cash flow and the present value demonstrate in the 3 scenarios indicates that the farm producers would not engage in any implementation due the negative cash-flow and no investment returns.

Continuation of current practices, as the anaerobic lagoon, would be the most attractive course of action because requires fewer investment (since all the producers already have an anaerobic lagoon under place) and this practice is approved by the environmental department to the confined feed animals operation, but with high emissions.

The table B2.4 shows the summary of the sensitive investment analysis for each farm, in which the 3rd scenario (continuation with the baseline scenario) is the most attractive option due the less investment involved comparing with the 1st and 2nd scenarios but with high emissions practice.

The 1st and end 2nd scenarios without emissions and considering the analysis undertaken, it is determined that the project is “additional” from an economic perspective, as it is only viable with the revenues of the carbon credits.

Table B 2.4. NPV and IRR results (in US\$) for the lifetime of the project: 21 years

| ID | FARM/SITE | NPV (1st SCENARIO) DIGESTER + FLARE | NPV (2nd SCENARIO) DIGESTER + FLARE + GENERATOR | NPV (3rd SCENARIO) ANAEROBIC OPEN LAGOON | IRR(%) |
|----|--|--|---|--|-----------|
| 1 | Fazenda São Marcos | -171,618 | -172,062 | -47,059 | UNDEFINED |
| 2 | Granja Rancho Fundo | -162,032 | -162,476 | -24,545 | UNDEFINED |
| 3 | Lote 13 | -162,032 | -162,476 | -30,148 | UNDEFINED |
| 4 | Fazenda Cachoeira Parte | -162,032 | -162,476 | -24,545 | UNDEFINED |
| 5 | Fazenda CE Quinhão A | -162,032 | -162,476 | -24,545 | UNDEFINED |
| 6 | Lote 29 Assentamento Campanário | -162,032 | -162,476 | -30,148 | UNDEFINED |
| 7 | Fazenda Nossa Senhora Aparecida | -154,576 | -155,020 | -30,148 | UNDEFINED |
| 8 | Fazenda Cachoeira | -162,032 | -162,476 | -24,545 | UNDEFINED |
| 9 | Fazenda Capim Branco | -162,032 | -162,476 | -30,148 | UNDEFINED |
| 10 | Faz São Sebastião - G 05 | -155,215 | -151,017 | -18,094 | UNDEFINED |
| 11 | Faz. São Sebastião - G 06 | -162,032 | -162,476 | -18,094 | UNDEFINED |
| 12 | Assentamento Campanário - Lote 88 | -162,032 | -157,399 | -20,458 | UNDEFINED |
| 13 | Granja Potreirito | -188,267 | -261,454 | -73,005 | UNDEFINED |
| 14 | Granja Arco -Íris - Faz. Laranja Azeda | -169,808 | -165,175 | -34,074 | UNDEFINED |
| 15 | Fazenda Santa Cecília | -158,687 | -159,131 | -20,406 | UNDEFINED |

Taking into account the investment sensitive analysis, the project activity still presents negatives NPV where the IRR can't be calculated. The table B2.5 indicates the sensitive analysis for the option where it is considered the installation of the digester, flare and electricity generation system, since this option is the unique alternative where revenues can be obtained in the project activity by the avoiding costs from the electricity purchase from the grid. The table shows 2 alternatives, A and B, where the alternative A considers the equipment cost reduction and the alternative B considers the increase of the energy price.

The column A considers the equipment cost reduction of 10 % since the costs of this project activity was estimated based in the registered project design document in 16

March 2009 – BRASCARBON Methane Recovery Project BCA-BRA-01, ref number 2318.

The column B considers the increase of the energy price in 10% since Brazilians electricity price is adjusted according to the IGPM – Índice Geral de Preços do Mercado (Brazil's Market Price Index). It was around 5,38% in the last 12 months (from April 2008 to April 2009)(<http://www.portalbrasil.net/igpm.htm>) but Brascarbon considered 10% as a sever tariff adjustment simulation. The energy tariffs can be obtained by the following web site: <http://www.aneel.gov.br/area.cfm?idArea=550>; Rural consumption class (where the project activity is installed), southwest region.

Conclusion: the project activity is “additional” from an economic perspective, as it is only viable with the revenues of the carbon credits.

Table B 2.5. Sensitive analysis calculation summary, operation lifetime of the project: 21 years

| ID | FARM/SITE | A - CONSIDERING 10% EQUIPMENT COST REDUCTION | B - CONSIDERING 10% INCREASE OF THE ENERGY PRICE | IRR(%) |
|----|--|---|--|-----------|
| | | NPV (2nd SCENARIO) DIGESTER + FLARE + GENERATOR | NPV (2nd SCENARIO) DIGESTER + FLARE + GENERATOR | |
| 1 | Fazenda São Marcos | -160,933 | -161,356 | UNDEFINED |
| 2 | Granja Rancho Fundo | -152,305 | -151,770 | UNDEFINED |
| 3 | Lote 13 | -152,305 | -151,770 | UNDEFINED |
| 4 | Fazenda Cachoeira Parte | -152,305 | -151,770 | UNDEFINED |
| 5 | Fazenda CE Quinhão A | -152,305 | -151,770 | UNDEFINED |
| 6 | Lote 29 Assentamento Campanário | -152,305 | -151,770 | UNDEFINED |
| 7 | Fazenda Nossa Senhora Aparecida | -145,595 | -144,314 | UNDEFINED |
| 8 | Fazenda Cachoeira | -152,305 | -151,770 | UNDEFINED |
| 9 | Fazenda Capim Branco | -152,305 | -151,770 | UNDEFINED |
| 10 | Faz São Sebastião - G 05 | -141,528 | -140,311 | UNDEFINED |
| 11 | Faz. São Sebastião - G 06 | -152,305 | -151,770 | UNDEFINED |
| 12 | Assentamento Campanário - Lote 88 | -147,229 | -146,694 | UNDEFINED |
| 13 | Granja Potreiroito | -248,660 | -250,749 | UNDEFINED |
| 14 | Granja Arco -Íris - Faz. Laranja Azeda | -154,227 | -154,469 | UNDEFINED |
| 15 | Fazenda Santa Cecília | -149,295 | -148,426 | UNDEFINED |

Premises adopted for the investment analysis calculation

| | | | |
|--|-----------------|--------|---------|
| UNIT PRICE OF ELECTRICITY [*] | [in USD / MWh] | 84.25 | USD/MWh |
| | [in BR / MWh] | 199.76 | BR/MWh |
| EXCHANGE RATE [* *] | BR/USD | 2.371 | BR/USD |
| Total energy produced / farm/year | [in MWh / year] | 175.20 | MWh/y |
| Brazilian bonds [taxa SELIC] [* * *] | | 10.77 | % |

(*)http://rad.aneel.gov.br/reportserverSAD?%2fSAD_REPORTS%2fSAMP_TarifaMedCCConsumoRegiao&rs:Command=Render

[*]<http://aneel.gov.br/area.cfm?isArea=550> (Rural class; feb/2009 - Central West region)

(**)[2.371 in 04/march/2009](http://www.bcb.gov.br/)

(***)<http://www.bcb.gov.br/>

(***) <http://www.bcb.gov.br/> (Brascarbon cosidered average selic tax from Jan/09 to Aug/09)

Technological Barrier:

There is no technology requested for the waste management system, by the environment department, to be implemented in the confined animals feed operations. The actual and approved waste treatment system is open anaerobic lagoons considered also the most economic system to be installed.

The Brascarbon proposal is the installation of the anaerobic digester technology with biogas recovery and destroys.

Anaerobic digester systems must have sized properly to handle the projected animal/effluent volumes with a Hydraulic Retention Time (HRT) consistent with extracting most/all CH₄ from the manure. Variables such as temperature, pressure, methane concentration and density of the biogas have to be determinate or calculated to maintain the lifecycle of the project.

Special equipment such a biogas analyzer, to determine the concentration of the methane in the biogas, has to be acquired to verify the performance of the digester. An enclosed flare has also to be installed to capture and destroy the biogas produced in the digester. Many other instruments such thermo coupling, solar cells, batteries, flow meters, programmable logic controller (to save de temperature information) has also to be installed to perform and control the biogas production.

Also to the adequate operation of the digesters operational procedures have to be followed and managed by an expertise technician. Brascarbon will be responsible for implementing an external support without interfering in the confined animal feed operation because the local animal producers does not have staff available to perform these tasks.

Moreover, operations and maintenance requirements involved with this technology, including a detailed monitoring program to maintain system performance levels, must also be considered.

Worldwide, few anaerobic digesters have achieved long-term operations, due primarily to inappropriate operations and maintenance.

The proposed animal waste management system represents the most advanced technology in the farm. The proposed project activity mitigates GHG emissions with associated environmental co-benefits.

Barrier Due to Prevailing Practice (National Policies and Circumstances)

In order to clarify the current circumstances regarding to confined animal operations in Brazil and the serious environmental problems can be occurred due the bad animal waste management system, the state of Santa Catarina, together with EMBRAPA (Brazilian Agricultural Research Corporation), developed a official term⁹ dedicated to the producers and agro-industries willing to reduce the environmental impact, adopting safety measures to control the waste where the major concentration of it is drained directly into the soil, rivers etc...

According to Mr. Everton Vargas, General Subsecretary of the Ministério das Relações Exteriores do Brasil, during the Major Economies Meeting on Energy Security and Climate Change, in Washington September 27th of 2007, “...*Brasil is ready to contribute and make global efforts to reduce the emissions, under the Kyotho Protocol,*”¹⁰

According to researchers of Embrapa Swine and Poultry (CNPISA), swine waste storage and treatment systems in the South of Brazil consist of open tanks (esterqueiras), open digesting (bioesterqueiras), ponds (anaerobic), treatment of compost (in solid form). Just a few bio-digesters exist. The material is normally distributed by pumps or gravity and applied to crops and pastures.

⁹ http://www.cnpisa.embrapa.br/pnma/pdf_doc/tac.pdf

¹⁰ <http://www.mct.gov.br/index.php/content/view/62460.html>

EMBRAPA stimulated by the Expansion and Waste Treatment Program of the State of Santa Catarina with instructions and publications¹¹ to help the producers and agro-industries to implement projects or systems to control the animal waste management protecting the eco-system. This sentiment was shared by representatives of EMBRAPA as well as officers of national swine producers association (ABCS) and Santa Catarina swine producer association (ACCS). The proposed practice change will afford these farms the financial means (via CER revenues) to adopt and maintain an advanced animal waste management system with reductions in GHG emissions and associated environmental co-benefits (including reduced water contamination).

B.6. Emission reductions:

B.6.1. Explanation of methodological choices:

This section is based on the equations used on the approved methodology AMS.III.D – Version 15 – “*Methane recovery in animal manure management systems*” and IPCC 2006.

This baseline methodology was chosen because:

1. This project category comprises methane recovery and destruction from manure and wastes from agricultural or agro-industrial activities that would be decaying anaerobically in the absence of the project activity by:
 - (a) Installing methane recovery and combustion system to an existing source of methane emissions, or;
 - (b) Changing the management practice of a biogenic waste or raw material in order to achieve the controlled anaerobic digestion equipped with methane recovery and combustion system.
2. The project activity satisfies the following conditions:
 - (a) The sludge will be handled aerobically.
 - (b) Technical measures will be used (e.g. flared, combusted) to ensure that all biogas produced by the digester is used or flared.
3. The annual average temperature of baseline site is higher than 5°C.
4. The depth of the baseline anaerobic lagoon is at least 1 meter.
5. Measures are limited to those that result in emission reductions of less than or equal to 60 kt CO₂ equivalent annually.
6. The storage time of the manure after removal from the animal barns, including transportation, should not exceed 24 hours before being fed into the anaerobic digester.

For baseline emissions calculation see section B.4 and all data is summarised in the section B.6.3, Table B.3 and Table B.4.

¹¹ <http://www.cnpsa.embrapa.br/index.php?ids=Sn6l70p1l&idl=&pg=1&area=21>

The project activity emissions are defined as the amount of methane that would be emitted to the atmosphere during the crediting period due to the project activity. In this case an anaerobic digester is considered the project activity and estimated emissions are determined as follows:

Step 1: Emission Reductions

Equation B4

$$ER_{y,estimated} = BE_y - PE_y$$

Where:

- ER_y = emission reductions in t CO₂e/year
 BE_y = the annual baseline methane emissions in t CO₂e/year
 PE_y = project emissions in t CO₂e/year

Step 2: Baseline Emissions

According to the Equation B1 section B.4

$$BE_y = GWP_{CH_4} * D_{CH_4} * UFB * \sum MCF_j * B_{0,LT} * N_{LT,y} * VS_{LT,y} * MS\%_{BL,j}$$

Where:

- BE_y Baseline emissions in year “y” (tCO₂e)
 GWP_{CH_4} Global Warming Potential (GWP) of CH₄ (21)
 D_{CH_4} CH₄ density (0.00067 t/m³ at room temperature (20 °C) and 1 atm pressure).
 LT Index for all types of livestock
 J Index for animal waste management system
 MCF_j Annual methane conversion factor (MCF) for the baseline animal waste management system “j”
 $B_{0,LT}$ Maximum methane producing potential of the volatile solid generated for animal type “LT” (m³ CH₄/kg dm)
 $N_{LT,y}$ Annual average number of animals of type “LT” in year “y” (numbers)
 $VS_{LT,y}$ Volatile solids for livestock “LT” entering the animal manure management system in year “y” (on a dry matter weight basis, kg dm/animal/year)
 $MS\%_{BL,j}$ Fraction of manure handled in baseline animal manure management system “j”
 UFB Model correction factor to account for model uncertainties (0.94)₁

Step 3: Project Emissions

According to the simplified baseline and monitoring methodology for a small-scale CDM project Type-III (AMS.III.D – version 15), project emissions consist of:

- (a) Physical leakage of biogas in the manure management systems which includes production, collection and transport of biogas to the point of flaring/combustion or gainful use ($PE_{PL,y}$);
- (b) Emissions from flaring or combustion of the gas stream ($PE_{flare,y}$);
- (c) CO₂ emissions using fossil fuels or electricity for the operation of all the installed facilities ($PE_{power,y}$).

Equation B5

$$PE_y = PE_{PL,y} + PE_{flare,y} + PE_{power,y}$$

Where:

- PE_y Project emissions in year “y” (tCO₂e)
- $PE_{PL,y}$ Emissions due to physical leakage of biogas in year “y” (tCO₂e)
- $PE_{flare,y}$ Emissions from flaring or combustion of the biogas stream in the year “y” (tCO₂e)
- $PE_{power,y}$ Emissions from the use of fossil fuel or electricity for the operation of the installed facilities in the year “y” (tCO₂e)

Where:

(A) Emissions due to physical leakage of biogas can be determinate as follows:**Equation B6**

$$PE_{PL,y} = 0,10 * GWP_{CH_4} * D_{CH_4} * \sum B_{0,LT} * N_{LT,y} * VS_{LT,y} * MS\%_{i,y}$$

Where:

- $PE_{PL,y}$ Emissions due to physical leakage of biogas in year “y” (tCO₂e)
- GWP_{CH_4} Global Warming Potential (GWP) of CH₄ (21)
- D_{CH_4} CH₄ density (0.00067 t/m³ at room temperature (20 °C) and 1 atm pressure).
- LT Index for all types of livestock
- J Index for animal waste management system
- $B_{0,LT}$ Maximum methane producing potential of the volatile solid generated for animal type “LT” (m³ CH₄/kg dm)
- $N_{LT,y}$ Annual average number of animals of type “LT” in year “y” (numbers)
- $VS_{LT,y}$ Volatile solids for livestock “LT” entering the animal manure management system in year “y” (on a dry matter weight basis, kg dm/animal/year)
- $MS\%_{i,y}$ Fraction of manure handled in system “i” in year “y”

(B) Emissions from flaring determinate as follows:**Equation B7**

$$(1 - \eta_{flare, h}) * GWP_{CH_4} / 1000$$

Where:

$PE_{flare,y}$ Project emissions from flaring of the residual gas stream in year y , tCO₂e

$TM_{RG,h}$ Mass flow rate of methane in the residual gas in the hour h , kg/h

$\eta_{flare,h}$ Flare efficiency in an hour h

GWP_{CH_4} Global Warming Potential of methane valid for the commitment period,
tCO₂e/tCH₄

$\eta_{flare,h}$ Flare efficiency in the hour h

(C) Emissions from use of fossil fuels or electricity for the operation:

No fossil fuel or electricity will be used in the project, therefore, $PE_{power,y}$ = zero.

Step 4: Leakage

According to the simplified baseline and monitoring methodology AMS.III.D / version 15, no leakage calculation is required.

B.6.2. Data and parameters that are available at validation:

| | |
|--|---|
| Data / Parameter: | $VS_{default}$ |
| Data unit: | kg dry matter/animal/day |
| Description: | Default value for the volatile solid excretion rate per day on a dry-matter basis for a defined livestock population |
| Source of data used: | Obtained from IPCC2006, vol 4, chapter 10, Tables 10A-7 and 10A-8. |
| Value applied: | 0.3 for Market Swine 0,46 for Breeding Swine 0,46 for Guilts |
| Justification of the choice of data or description of measurement methods and procedures actually applied : | Genetics and nutrition adopted for these farms as so as in Western Europe. More details or information of the genetics can be obtained at the producers or at the Associação Brasileira dos Criadores de Suínos (Brazilian Swine Association). http://www.abcs.org.br/portal/index2.jsp The genetic source of production operation is originated from Annex I party; The farm uses formulated feed rations optimized for the various stage of growth and animals category; The formulated feed ratins can be validated through on farm record keeping. Used of factors as defined in IPCC2006, chapter 10, volume 4, since that there is no national data for gross energy calculation. |
| Any comment: | |

| | |
|---|--|
| Data / Parameter: | MCF _j |
| Data unit: | % |
| Description: | Annual methane conversion factor for the baseline animal waste management system “j”. |
| Source of data used: | Obtained from IPCC2006, vol 4, chapter 10, Tables 10.17. |
| Value applied: | 79% |
| Justification of the choice of data or description of measurement methods and procedures actually applied : | Average temperature of central region, mainly where the project sites are located is 23 to 25 Celsius during the year, according to CPTEC/INPE/EMBRAPA and INMET http://bancodedados.cptec.inpe.br http://www.inmet.gov.br/html/clima.php |
| Any comment: | |

| | |
|---|---|
| Data / Parameter: | MS% _{BI,j} |
| Data unit: | Fraction |
| Description: | Fraction of manure handled in baseline animal manure management system “j”. |
| Source of data used: | Project proponents |
| Value applied: | 1 |
| Justification of the choice of data or description of measurement methods and procedures actually applied : | 100% of the manure will be handled per system j. |
| Any comment: | |

| | |
|---|--|
| Data / Parameter: | GWP _{CH4} |
| Data unit: | tCO _{2e} /tCH ₄ |
| Description: | Global warming potential of CH ₄ |
| Source of data used: | IPCC 2006 |
| Value applied: | 21 |
| Justification of the choice of data or description of measurement methods and procedures actually applied : | Conversion factor for metric tones of CH ₄ to metric tones of CO ₂ equivalent. |
| Any comment: | |

| | |
|---|--|
| Data / Parameter: | W _{default} |
| Data unit: | Kg |
| Description: | Default average animal weight of a defined population at the project site. |
| Source of data: | IPCC 2006, Tables 10-A7 and 10-A8. |
| Value applied: | Sows(breeding swine): 198 kg Finishers(market swine): 50 kg Nursery (market swine): 50 kg Boars (market swine): 50 kg Gilts (breeding swine): 198 kg |
| Justification of the choice of data or description of measurement methods and procedures actually applied : | Default value according to IPCC 2006 in western Europe region. Genetics and nutrition adopted for these farms as so as in Western Europe. More details or information on genetics can be obtained at the producers or at the Associação Brasileira dos Criadores de Suínos (Brazilian Swine Association). http://www.abcs.org.br/portal/index2.jsp |
| Any comment: | |

| | |
|---|---|
| Data / Parameter: | B_{0,LT} |
| Data unit: | m ³ CH ₄ /kg dm |
| Description: | Maximum methane producing potential of the volatile solid generated for animal type "LT". |
| Source of data used: | IPCC 2006, Tables 10-A7 and 10-A8. |
| Value applied: | Sows(breeding swine more than 200 kg mass): 0.45 Finishers(market swine more than 50 Kg mass): 0.45 Nursery: 0.45 Boars and Gilts (market swine more than 100 Kg mass): 0.45 |
| Justification of the choice of data or description of measurement methods and procedures actually applied : | Default value according to IPCC 2006 in western Europe region. Genetics and nutrition adopted for these farms are the same as in western Europe. More details or information of the genetics can be obtained at the producers or at the Associação Brasileira dos Criadores de Suínos (Brazilian Swine Association). http://www.abcs.org.br/portal/index2.jsp The genetic source of production operation is originated from Annex I party; The farm uses formulated feed rations optimized for the various stage of growth and animals category; The formulated feed ratios can be validated through on farm record keeping. |
| Any comment: | |

B.6.3. Ex-ante calculation of emission reductions:

(i) According to the baseline description in the section B.4, the results from the equations are summarized in the following table B3 and B4:

Table B3 – Baseline emissions in the first year (2011) in ton CO₂e/year

| ID | Farm/Site | Baseline Emissions per Annual Average Number of Animals Type "LT" in ton CO ₂ e/year | | | | | Total |
|--------------|--|---|---------------|-----------------|-----------|------------|---------------|
| | | Sows | Finishers | Nursery/Weaners | Boars | Gilts | |
| 1 | Fazenda São Marcos | 734 | 4,648 | 701 | 20 | 201 | 6,304 |
| 2 | Granja Rancho Fundo | - | 4,112 | - | - | - | 4,112 |
| 3 | Lote 13 | - | 4,406 | - | - | - | 4,406 |
| 4 | Fazenda Cachoeira Parte | - | 4,112 | - | - | - | 4,112 |
| 5 | Fazenda CE Quinhão A | - | 4,406 | - | - | - | 4,406 |
| 6 | Lote 29 Assentamento Campanário | - | 4,038 | - | - | - | 4,038 |
| 7 | Fazenda Nossa Senhora Aparecida | - | 4,038 | - | - | - | 4,038 |
| 8 | Fazenda Cachoeira | - | 4,038 | - | - | - | 4,038 |
| 9 | Fazenda Capim Branco | - | 4,038 | - | - | - | 4,038 |
| 10 | Faz São Sebastião - G 05 | - | 1,885 | - | - | - | 1,885 |
| 11 | Faz. São Sebastião - G 06 | - | 2,057 | - | - | - | 2,057 |
| 12 | Assentamento Campanário - Lote 88 | - | 2,073 | - | - | - | 2,073 |
| 13 | Granja Potreiroito | 1,834 | 11,620 | 1,948 | 49 | 502 | 15,953 |
| 14 | Granja Arco -Íris - Faz. Laranja Azeda | - | 6,786 | - | - | - | 6,786 |
| 15 | Fazenda Santa Cecília | 183 | 1,162 | 195 | 15 | 50 | 1,605 |
| TOTAL | | 2,751 | 63,421 | 2,844 | 84 | 754 | 69,854 |

Table B4 – Total baseline emissions per year.

| ID | Farm/Site | Baseline Emissions per Annual Average Number of Animals Type "LT", in t CO2e / year | | | | | | | Total |
|---|--|--|--------|--------|--------|--------|--------|--------|---------|
| | | 2011 | 2012 | 2013 | 2014 | 2015 | 2016 | 2017 | |
| 1 | Fazenda São Marcos | 6,304 | 6,304 | 6,304 | 6,304 | 6,304 | 6,304 | 6,304 | 44,126 |
| 2 | Granja Rancho Fundo | 4,112 | 4,112 | 4,112 | 4,112 | 4,112 | 4,112 | 4,112 | 28,787 |
| 3 | Lote 13 | 4,406 | 4,406 | 4,406 | 4,406 | 4,406 | 4,406 | 4,406 | 30,843 |
| 4 | Fazenda Cachoeira Parte | 4,112 | 4,112 | 4,112 | 4,112 | 4,112 | 4,112 | 4,112 | 28,787 |
| 5 | Fazenda CE Quinhão A | 4,406 | 4,406 | 4,406 | 4,406 | 4,406 | 4,406 | 4,406 | 30,843 |
| 6 | Lote 29 Assentamento Campanário | 4,038 | 4,038 | 4,038 | 4,038 | 4,038 | 4,038 | 4,038 | 28,269 |
| 7 | Fazenda Nossa Senhora Aparecida | 4,038 | 4,038 | 4,038 | 4,038 | 4,038 | 4,038 | 4,038 | 28,269 |
| 8 | Fazenda Cachoeira | 4,038 | 4,038 | 4,038 | 4,038 | 4,038 | 4,038 | 4,038 | 28,269 |
| 9 | Fazenda Capim Branco | 4,038 | 4,038 | 4,038 | 4,038 | 4,038 | 4,038 | 4,038 | 28,269 |
| 10 | Faz São Sebastião - G 05 | 1,885 | 1,885 | 1,885 | 1,885 | 1,885 | 1,885 | 1,885 | 13,194 |
| 11 | Faz. São Sebastião - G 06 | 2,057 | 2,057 | 2,057 | 2,057 | 2,057 | 2,057 | 2,057 | 14,396 |
| 12 | Assentamento Campanário - Lote 88 | 2,073 | 2,073 | 2,073 | 2,073 | 2,073 | 2,073 | 2,073 | 14,514 |
| 13 | Granja Potreirito | 15,953 | 15,953 | 15,953 | 15,953 | 15,953 | 15,953 | 15,953 | 111,671 |
| 14 | Granja Arco -Íris - Faz. Laranja Azeda | 6,786 | 6,786 | 6,786 | 6,786 | 6,786 | 6,786 | 6,786 | 47,500 |
| 15 | Fazenda Santa Cecília | 1,605 | 1,605 | 1,605 | 1,605 | 1,605 | 1,605 | 1,605 | 11,237 |
| Total Baseline per year | | 69.854 | 69,854 | 69,854 | 69,854 | 69,854 | 69,854 | 69,854 | 488,976 |
| Total baseline emissions in 7 years, in t CO2e/year | | | | | | | | | |

(ii) According to the project emissions description in the section B.6 and equation B5:

Table B5 – Total project activity emissions in the first year (2011)

| ID | Farm/Site | Project Emissions per Annual Average Number of Animals Type "LT" in ton CO ₂ e /year | | | | | Total |
|--|--|--|---------------|-----------------|-----------|------------|---------------|
| | | Sows | Finishers | Nursery/Weaners | Boars | Gilts | |
| 1 | Fazenda São Marcos | 172 | 1,091 | 165 | 5 | 47 | 1,479 |
| 2 | Granja Rancho Fundo | - | 965 | - | - | - | 965 |
| 3 | Lote 13 | - | 1,034 | - | - | - | 1,034 |
| 4 | Fazenda Cachoeira Parte | - | 965 | - | - | - | 965 |
| 5 | Fazenda CE Quinhão A | - | 1,034 | - | - | - | 1,034 |
| 6 | Lote 29 Assentamento Campanário | - | 948 | - | - | - | 948 |
| 7 | Fazenda Nossa Senhora Aparecida | - | 948 | - | - | - | 948 |
| 8 | Fazenda Cachoeira | - | 948 | - | - | - | 948 |
| 9 | Fazenda Capim Branco | - | 948 | - | - | - | 948 |
| 10 | Faz São Sebastião - G 05 | - | 442 | - | - | - | 442 |
| 11 | Faz. São Sebastião - G 06 | - | 483 | - | - | - | 483 |
| 12 | Assentamento Campanário - Lote 88 | - | 487 | - | - | - | 487 |
| 13 | Granja Potreirito | 430 | 2,727 | 457 | 12 | 118 | 3,744 |
| 14 | Granja Arco -Íris - Faz. Laranja Azeda | - | 1,592 | - | - | - | 1,592 |
| 15 | Fazenda Santa Cecília | 43 | 273 | 46 | 3 | 12 | 377 |
| TOTAL in ton CO₂e/year | | 646 | 14,883 | 667 | 20 | 177 | 16,392 |

Table B6 – Total project activity emissions per year.

| Table D0 – Total Project Activity Emissions per year: | | | | | | | | | |
|--|--|---|--------|--------|--------|--------|--------|--------|---------|
| ID | Farm Name/Site | Project Activity Emissions in t CO2e / year | | | | | | | |
| | | 2011 | 2012 | 2013 | 2014 | 2015 | 2016 | 2017 | Total |
| 1 | Fazenda São Marcos | 1,479 | 1,479 | 1,479 | 1,479 | 1,479 | 1,479 | 1,479 | 10,355 |
| 2 | Granja Rancho Fundo | 965 | 965 | 965 | 965 | 965 | 965 | 965 | 6,755 |
| 3 | Lote 13 | 1,034 | 1,034 | 1,034 | 1,034 | 1,034 | 1,034 | 1,034 | 7,238 |
| 4 | Fazenda Cachoeira Parte | 965 | 965 | 965 | 965 | 965 | 965 | 965 | 6,755 |
| 5 | Fazenda CE Quinhão A | 1,034 | 1,034 | 1,034 | 1,034 | 1,034 | 1,034 | 1,034 | 7,238 |
| 6 | Lote 29 Assentamento Campanário | 948 | 948 | 948 | 948 | 948 | 948 | 948 | 6,634 |
| 7 | Fazenda Nossa Senhora Aparecida | 948 | 948 | 948 | 948 | 948 | 948 | 948 | 6,634 |
| 8 | Fazenda Cachoeira | 948 | 948 | 948 | 948 | 948 | 948 | 948 | 6,634 |
| 9 | Fazenda Capim Branco | 948 | 948 | 948 | 948 | 948 | 948 | 948 | 6,634 |
| 10 | Faz São Sebastião - G 05 | 442 | 442 | 442 | 442 | 442 | 442 | 442 | 3,096 |
| 11 | Faz. São Sebastião - G 06 | 483 | 483 | 483 | 483 | 483 | 483 | 483 | 3,378 |
| 12 | Assentamento Campanário - Lote 88 | 487 | 487 | 487 | 487 | 487 | 487 | 487 | 3,406 |
| 13 | Granja Potreirito | 3,744 | 3,744 | 3,744 | 3,744 | 3,744 | 3,744 | 3,744 | 26,205 |
| 14 | Granja Arco -Íris - Faz. Laranja Azeda | 1,592 | 1,592 | 1,592 | 1,592 | 1,592 | 1,592 | 1,592 | 11,146 |
| 15 | Fazenda Santa Cecilia | 377 | 377 | 377 | 377 | 377 | 377 | 377 | 2,637 |
| Total Project Activity per year | | 16.392 | 16,392 | 16,392 | 16,392 | 16,392 | 16,392 | 16,392 | 114,744 |
| Total project activity emissions in 7 years, in t CO2e = | | | | | | | | | |

(iii) According to the project emissions reduction in the section B.6, the results of the estimation of the emissions reduction, equation B4 are summarized in the following table B7:

Table B7 – Total Emission Reductions

| Description | Year | | | | | | |
|---|--------|--------|--------|--------|--------|--------|--------|
| | 2011 | 2012 | 2013 | 2014 | 2015 | 2016 | 2017 |
| Total Baseline Emissions – BE _y , in ton CO ₂ e/year | 69,854 | 69,854 | 69,854 | 69,854 | 69,854 | 69,854 | 69,854 |
| Total Project Emissions – PE _y , in ton CO ₂ e/year | 16,392 | 16,392 | 16,392 | 16,392 | 16,392 | 16,392 | 16,392 |
| Total Emission Reductions ER _y = BE _y – PE _y (tCO ₂ e/year) | 53,462 | 53,462 | 53,462 | 53,462 | 53,462 | 53,462 | 53,462 |

B.6.4 Summary of the ex-ante estimation of emission reductions:

Table B8 – Summary of the Total Ex-ante Emissions Reductions

| Year | Estimation of project activity emissions (ton CO ₂ e) | Estimation of baseline emissions (ton CO ₂ e) | Estimation of leakage (ton CO ₂ e) | Estimation of overall emission reductions (ton CO ₂ e) |
|---|--|--|---|---|
| 2011 | 16,392 | 69,854 | 0 | 53,462 |
| 2012 | 16,392 | 69,854 | 0 | 53,462 |
| 2013 | 16,392 | 69,854 | 0 | 53,462 |
| 2014 | 16,392 | 69,854 | 0 | 53,462 |
| 2015 | 16,392 | 69,854 | 0 | 53,462 |
| 2016 | 16,392 | 69,854 | 0 | 53,462 |
| 2017 | 16,392 | 69,854 | 0 | 53,462 |
| Total (tonnes of CO ₂ e) | 114,744 | 488,978 | 0 | 374,234 |

B.7 Application of a monitoring methodology and description of the monitoring plan:

The methodology applied to this project activity is AMS-III.D./version 15, *Methane recovery in animal manure management systems*. The simplified monitoring methodology is applicable to this project activity because they provide a method to accurately measure and record the GHG emissions that will be captured and combusted by the project activity.

Each individual farm will be monitored independently according with the parameters described in the following section B.7.1 and monitored according with the monitoring plan described in the section B.7.2.

All parameters are deeply controlled by operational procedures developed by Brascarbon. A list and the procedures contained in the Brascarbon Operational Procedures Manual are mentioned in the PDD in the Annex 4.

Brascarbon trained several regional technicians who will be responsible to the maintenance and the monitoring system based in ISO 9000 (Brascarbon Operational Procedure Manual).

Details of the monitoring system can be found in the section B.7.2.

B.7.1 Data and parameters monitored:

| | |
|----------------------------------|---|
| Data / Parameter: | T f |
| Data unit: | °C |
| Description: | Combustion temperature of the flare |
| Source of data: | Brascarbon Monitoring Report System |
| Value of data: | Above 500°C |
| Measurement procedures (if any): | According to the Monitoring Operational Procedure POP-01 |
| Monitoring frequency | Every one minute measurement and registration by a Control Logic Program (CLP) |
| QA/QC procedures | Check the data for more accurate information. |
| Any comment: | Monitoring operational procedure POP-01 can be found at the Brascarbon Operational Procedure Manual |

| | |
|----------------------------------|---|
| Data / Parameter: | SITE INSPECTION |
| Data unit: | ----- |
| Description: | Inspection on the site considering relevant regulation and the infrastructure of the site |
| Source of data: | Brascarbon Monitoring Report System |
| Value of data: | Documents |
| Measurement procedures (if any): | Annual follow-up of the documentation to check the expiration date, changes in the production lay-out and surroundings of the digester. Use of the annex attached at the operational procedure POP-02 |
| Monitoring frequency | Annually |
| QA/QC procedures | Check of the confined animal production official documents |
| Any comment: | Monitoring operational procedure POP-02 can be found at the Brascarbon Operational Procedure Manual |

| | |
|----------------------------------|--|
| Data / Parameter: | $N_{LT,y}$ |
| Data unit: | Number |
| Description: | Annual average number of animals of type “LT” in year “y” |
| Source of data: | Brascarbon Monitoring Report System |
| Value of data: | Number of heads |
| Measurement procedures (if any): | Checking of the documentation located at the confined animal production and use of the table annexed at the operational procedure POP-03. Use of the Equation B3 established in the section B4 step 2 item B – determination of the annual average number of animals. |
| Monitoring frequency | Monthly |
| QA/QC procedures | Check of the site records and documents. |
| Any comment: | Monitoring operational procedure POP-03 can be found at the Brascarbon Operational Procedure Manual |

| | |
|----------------------------------|---|
| Data / Parameter: | W_{site} |
| Data unit: | Kg |
| Description: | Average animal weight of a defined livestock population at the project site in year |
| Source of data: | Brascarbon Monitoring Report System |
| Value of data: | |
| Measurement procedures (if any): | Checking data and records in the confined feed animal operation |
| Monitoring frequency | Quarterly |
| QA/QC procedures | Check of the site records and documents, |
| Any comment: | Monitoring operational procedure POP-016 |

| | |
|----------------------------------|--|
| Data / Parameter: | BG burnt,y |
| Data unit: | m^3 |
| Description: | Biogas flared or used as a fuel in the year y. |
| Source of data: | Brascarbon Monitoring Report System |
| Value of data: | to be measured during the monitoring period |
| Measurement procedures (if any): | Read the volume in the local flow gear and register in the table annexed in the operational procedure POP-04 |
| Monitoring frequency | Monthly |
| QA/QC procedures | Check the registers sent from the field. Control and assure the calibration program of the flow meter. |
| Any comment: | Monitoring operational procedure POP-04 can be found at the Brascarbon Operational Procedure Manual |

| | |
|----------------------------------|---|
| Data / Parameter: | $W_{CH_4,y}$ |
| Data unit: | Fraction |
| Description: | Methane content in biogas in the year “y” |
| Source of data: | Brascarbon Monitoring Report System |
| Value of data: | --- |
| Measurement procedures (if any): | Use of methane concentration analysis instrument |
| Monitoring frequency | Periodical. To assure that the monitoring frequency provides a 95% confidence level, the adequate frequency will be determined through a statistical analysis of the methane fraction variation, based on methane fraction data gathered on a group of farms per region during a certain period time. |
| QA/QC procedures | Check the registers in the generated documents. Control and assure the calibration program of the instrument. |
| Any comment: | Monitoring operational procedure POP-05 can be found at the Brascarbon Operational Procedure Manual |

| | |
|----------------------------------|---|
| Data / Parameter: | T_{biogas} |
| Data unit: | °C |
| Description: | Temperature of the biogas at operation conditions |
| Source of data: | Brascarbon Monitoring Report System |
| Value of data: | According to the ambient conditions |
| Measurement procedures (if any): | Measurement according Operational Procedure POP-06 |
| Monitoring frequency | Monthly |
| QA/QC procedures | Check the registers in the generated documents. |
| Any comment: | Monitoring operational procedure POP-06 can be found at the Brascarbon Operational Procedure Manual |

| | |
|----------------------------------|---|
| Data / Parameter: | $D_{CH_4,y}$ |
| Data unit: | tones / m ³ |
| Description: | Density of the methane combusted at operation conditions |
| Source of data: | Brascarbon Monitoring Report System |
| Value of data: | Determined according the biogas operation conditions (temperature and pressure) |
| Measurement procedures (if any): | Calculation According to the Operational Procedure POP-07. Use of the formula considering pressure, temperature and molecular mass of methane |
| Monitoring frequency | Monthly |
| QA/QC procedures | Check and approve the density value calculation. |
| Any comment: | Monitoring operational procedure POP-07 can be found at the Brascarbon Operational Procedure Manual. Reference: Annex 13-Tool to determine project emissions from flaring gases containing methane. |

| | |
|----------------------------------|---|
| Data / Parameter: | Q_{DM} |
| Data unit: | ----- |
| Description: | Sludge soil application |
| Source of data: | Brascarbon Monitoring Report System |
| Value of data: | ----- |
| Measurement procedures (if any): | Supervision in the field |
| Monitoring frequency | Defined according to the digester performance |
| QA/QC procedures | Check the registers in the generated documents. |
| Any comment: | Monitoring operational procedure POP-09 can be found at the Brascarbon Operational Procedure Manual |

| | |
|----------------------------------|---|
| Data / Parameter: | FE or $\eta_{flare, h}$ |
| Data unit: | % |
| Description: | Flare Efficiency |
| Source of data: | Brascarbon Monitoring Report System |
| Value of data: | If exhaust gas hourly temperature $\geq 500^{\circ}\text{C}$ than 90% efficiency If exhaust gas hourly temperature $< 500^{\circ}\text{C}$ than 50% efficiency |
| Measurement procedures (if any): | Enclosed flare. Continuously temperature measurement and registration in the programmable logic controller (PLC). |
| Monitoring frequency | Continuously |
| QA/QC procedures | Check the registers in the generated documents. |
| Any comment: | Continuous monitoring of the flare efficiency according to Monitoring Operational Procedure POP-08 can be found at the Brascarbon. |

| | |
|----------------------------------|---|
| Data / Parameter: | $ER_{y,ex-post}$ |
| Data unit: | Ton CO ₂ e |
| Description: | Ex-post emission reductions achieved by the project activity based on monitored values for the year “y”. |
| Source of data: | Brascarbon Monitoring Report System |
| Value of data: | to be determinate according to the measured data |
| Measurement procedures (if any): | Comparison of the baseline with the actual measured data according to the operational procedure POP-17 |
| Monitoring frequency | Yearly |
| QA/QC procedures | Check the registers in the generated documents. |
| Any comment: | Used to cap the maximal emission reduction in any year. Monitoring operational procedure POP-17 can be found at the Brascarbon Operational Procedure Manual |

| | |
|----------------------------------|---|
| Data / Parameter: | FFR |
| Data unit: | ----- |
| Description: | Formulated Feed Rations |
| Source of data: | Brascarbon Monitoring Report System |
| Value of data: | ----- |
| Measurement procedures (if any): | According to the Operational Procedure POP-14 |
| Monitoring frequency | Monthly |
| QA/QC procedures | Check the registers and/or food purchases records on the farm. |
| Any comment: | Monitoring operational procedure POP-14 can be found at the Brascarbon Operational Procedure Manual |

| | |
|----------------------------------|---|
| Data / Parameter: | P biogas |
| Data unit: | mbar |
| Description: | Pressure of the biogas at operation conditions |
| Source of data: | Brascarbon Monitoring Report System |
| Value of data: | to be determinate according to the measured data |
| Measurement procedures (if any): | Measurement with portable local pressure gauge. Measurement according Operational Procedure POP-13 |
| Monitoring frequency | Monthly |
| QA/QC procedures | Check the registers in the generated documents and equipment calibration |
| Any comment: | Monitoring operational procedure POP-13 can be found at the Brascarbon Operational Procedure Manual |

| | |
|----------------------------------|---|
| Data / Parameter: | GENETIC SOURCE |
| Data unit: | ----- |
| Description: | Genetic source from annex I party |
| Source of data: | Brascarbon Monitoring Report System |
| Value of data: | Western Europe |
| Measurement procedures (if any): | Data and records from the confined feed animal operation. According Operational Procedure POP-15 |
| Monitoring frequency | Annually |
| QA/QC procedures | Check data and records from the farm operation |
| Any comment: | Monitoring operational procedure POP-15 can be found at the Brascarbon Operational Procedure Manual |

| | |
|----------------------------------|---|
| Data / Parameter: | MS% i,y |
| Data unit: | Fraction |
| Description: | Fraction of manure handled in project emissions in system “i”, year “y”. |
| Source of data: | Brascarbon Monitoring Report System |
| Value of data: | |
| Measurement procedures (if any): | During the site inspection, checking if changes in the adopted waste management system and surroundings of the digester was modified from the original proposal project activity. Use of the annex attached at the operational procedure POP-02 |
| Monitoring frequency | Annually |
| QA/QC procedures | Check of the confined animal production official documents |
| Any comment: | Monitoring operational procedure POP-02 can be found at the Brascarbon Operational Procedure Manual |

| | |
|----------------------------------|---|
| Data / Parameter: | N _{day,y} |
| Data unit: | Number |
| Description: | Number of days animal is alive in the farm, in year “y” |
| Source of data: | Brascarbon Monitoring Report System |
| Value of data: | Number of days |
| Measurement procedures (if any): | Checking of the documentation located at the confined animal production and use of the operational procedure POP-03 |
| Monitoring frequency | Monthly |
| QA/QC procedures | Check of the site records and documents. |
| Any comment: | Monitoring operational procedure POP-03 can be found at the Brascarbon Operational Procedure Manual |

| | |
|----------------------------------|--|
| Data / Parameter: | N _{p,y} |
| Data unit: | Number |
| Description: | Number of animals produced annually of type “LT” in year “y” |
| Source of data: | Brascarbon Monitoring Report System |
| Value of data: | Number of heads |
| Measurement procedures (if any): | Checking of the documentation located at the confined animal production and use of the table annexed at the operational procedure POP-03 |
| Monitoring frequency | Annually |
| QA/QC procedures | Check of the site records and documents. |
| Any comment: | Monitoring operational procedure POP-03 can be found at the Brascarbon Operational Procedure Manual |

B.7.2 Description of the monitoring plan:

The following table, Table B9, presents the monitoring plan to be applicable for each farm described in the PDD and followed by Brascarbon in order to achieve certified emissions reductions, after each validation and verification process. Other information of monitoring plan and system can be found in the Annex 4.

Table B9 – Monitoring Plan

| ID | DATA | Data Type | Data Unit | Data Variable | Frequency | Measured(m) Calculated(c) Estimated(e) Documented(d) | Proportion of the data to be monitored | How will the data be archived? | For how long is archived data to be kept? | Comment |
|----|-------------------------------|-------------|--------------------|-----------------------|----------------------|---|---|--------------------------------------|---|---|
| 1 | T f | Temp | °C | Flare Temp. | Every 1 minute | M | 100% | electronic | Duration of the project +5years | Use for flare efficiency |
| 2 | Site Inspection | Document | ---- | ---- | Annually | D | 100% | electronic | Duration of the project +5years | General Site Inspection |
| 3 | N _{LT,y} | Number | - | Nr, Of heads | Monthly | M | 100% | electronic | Duration of the project +5years | Used to quantify the methane generation potential |
| 4 | BG _{burnt,y} | Volume | m ³ | Biogas produced | Monthly | M | 100% | electronic | Duration of the project +5years | Cumulative biogas production |
| 5 | W _{CH₄,y} | Fraction | % | Methane content | TBD(*) | M | 100% | electronic | Duration of the project +5years | Concentration in wet basis |
| 6 | T _{biogas} | Temp | °C | Biogas Temperature | Monthly | M | 100% | electronic | Duration of the project +5years | Use to biogas density calculation |
| 7 | D _{CH₄} | Mass | Ton/m ³ | Density | Monthly | C | 100% | electronic | Duration of the project +5years | Density |
| 8 | FE | Efficiency | % | Temperature | Monthly | C | 100% | electronic | Duration of the project +5years | Efficiency determinate by the burning temp. |
| 9 | QDM | Supervision | -- | --- | Every Batch Disposed | E | 100% | electronic | Duration of the project +5years | Sludge disposed outside project boundary |
| 10 | W site | Mass | kg | Average Animal weight | Quarterly | D | 100% | electronic | Duration of the project +5years | Yearly methane potential generation |
| 11 | ER _{y,estimated} | Mass | Ton | CO ₂ e | Annually | C | 100% | electronic | Duration of the project +5years | Yearly methane potential generation |
| 12 | FFR | ----- | --- | Feed Formulation | Monthly | D | 100% | electronic | Duration of the project +5years | Feed Formulation Rations |
| 13 | P biogas | Pressure | mbar | Biogas Pressure | Monthly | M | 100% | electronic | Duration of the project +5years | Feed Formulation Rations |
| 14 | Genetic Source | Document | ----- | genetic | Annually | D | 100% | electronic | Duration of the project +5years | Genetic Source |
| 15 | MS% i,y | fraction | % | Manure handled | Annually | E | 100% | electronic | Duration of the project +5years | General Site Inspection |
| 16 | N day,y | number | days | days | Monthly | M | 100% | electronic | Duration of the project +5years | Nr. Of days animal is alive |
| 17 | N p,y | number | heads | Nr of heads | Monthly | M | 100% | electronic | Duration of the project +5years | Nr. Of heads per category annually |

(*) TBD: to be determinate to attend 95% confidence level

The monitoring plan will concentrate on ensuring the emission reductions are accurately accounted within the project boundary.

Brascarbon introduce de operational procedures, from the Brascarbon Operational Procedures Manual, to facilitate the monitoring system of the parameters described in the Table B9 – Monitoring Plan.

A list of the operational procedures can be found in the annex 4, at the end of this project document design.

The summary of the operational procedures with the main activities is described below:

Monitoring of the Flare Temperature

Temperature of the flare will be controlled by a logic system which will be able to store the flare temperature continuously. The sensor - thermo coupling - is installed in the flare body.

The signal from the thermocouple is sent to the CLP where the information of the temperature is recorded every each minute.

The file information from the logic system will be recovered monthly using a pen drive and the file will be sent to the QA/QC officer to manage the information for further verification. A spreadsheet in excel is available from the system to show the temperature per minute per day.

The system CLP and the thermocouple will be powered by solar cell – no use of energy from the grid. A 12 volts battery is also included in the system to save energy to be used during the night or days lack of sun. The battery capacity is for 240 hours.

The flare system will operate according to the flare manufacturer's specification where the flare is operational from temperatures above 100 °C.

According to the Tool to determine project emissions from flaring gases containing methane and the specification of the flare, the temperature of the flare will be separated in 3 groups, to determine the flare efficiency, as follows:

- Total hours when the exhaust gas temperature is ≥ 500 °C for more than 40 minutes.
- Total hours when the exhaust gas temperature is ≤ 500 °C and ≥ 100 °C for more than 40 minutes.
- Total hours when the exhaust gas temperature is < 100 °C or without registers in any hour.

In the operational procedure POP 1 can be found the formulary 01.001 where the temperature information is managed according to the specification above mentioned.

All QA/QC procedures are described in the operational procedure related to the maintenance and/or calibration of the equipment.



PEN DRIVE



CLP

Site Inspection.

A check list included in the procedure POP 2 – Site Inspection - number 02.001 is the basic orientation to guide the technicians during inspection in the field to follow all items related to the project activity installation.

Attached on it, the MS% i,y - Fraction of manure handled in the system during the year, is included to be inspected during the each farm visit.

No changes in the manure managing system will be permitted during the project activity.

Variable to be monitored: SITE INSPECTION and MS% i,y .

Average number of animals.

To calculate the average number of animals per category LT in the year y ($N_{LT,y}$) the operational procedure has the formulary 03.002 from the operational procedure POP 3 (average number of animals) where it takes into account of the number of days the animal is alive in the year y ($N_{day,y}$) and the number of animals produced per category LT in the year y ($N_{p,y}$).

The days of animals alive and the total animal produced is also monitored with the same procedure and the formulary 03.002.

The formula used to the calculation is indicated in the PDD section B.4, step 2 item B, equation B3.

Variables to be monitored: $N_{LT,y}$, $N_{day,y}$ and $N_{p,y}$.

Measurement of the volumetric flow rate of the biogas.

The operational procedure POP 4- Measurement of the biogas flow rate, is a guide to explain to the technicians how to obtain the biogas flow rate.

The control of the flow rate is by a CLP (see picture in the POP 1 description above) installed in the control panel in the project activity site.

The panel is equipped with solar cells to supply energy to the system, a battery (capacity for 10 days lack of sun) and the flow rate transmitter device to receive information from the thermal mass meter. The flow meter used in the project activity is a thermal mass flow meter.

The system is very confident and supplied by Endress+hauser, leader of measurement system of liquids and gases. Example of the meter used in the project activity:



The information recorded in the CLP is recovered by the use of a pendrive and the file containing the information will be sent to the QA/QC officer to manage the information for further verification. A spreadsheet in excel is available from the system to show the flow rate per minute per day.

The variable measured with this procedure are: $BG_{burnt,y}$.

The data monitored is controlled in the formulary 04.001 attached in the operational procedure POP 4.

Methane content determination.

The POP 5- Methane content was prepared to guide the technicians how to obtain the methane content using electronic equipment.

The methane content is obtained by a electronic equipment BIOGAS or TESTO.

The concentration of methane is measured in a few seconds before starting the measurement button.

The operation of the equipment and the devices to be used is clearly described in the operational procedure as so as in the equipment manual.

Both equipment is able to measure the methane concentration in the biogas.

The variables measured with this equipment are: $W_{CH_4,y}$.

All QA/QC procedures are described in the operational procedure related to the maintenance and/or calibration of the equipment.

The data monitored is controlled in the formulary 04.001.

Biogas temperature measurement.

The biogas temperature is obtained by an electronic equipment BIOGAS.

The methane temperature is measured in a few seconds after inserting the thermocouple in the biogas line connector device.

The operation of the equipment and the devices to be used is clearly described in the operational procedure as so as in the equipment manual.

All QA/QC procedures are described in the operational procedure related to the maintenance and/or calibration of the equipment.

The variable measured with this equipment is: T biogas.

The data monitored is controlled in the formulary 04.001 described in the operational procedure POP 4 – Biogas temperature measurement.

Density of the methane determination.

The POP 7- Density of the Methane - is a guide to calculate the methane density. The formulary 07.001 attached in the operational procedure shows the data to be filled to make the calculation.

The methane density calculation is according to the Tool to determine project emissions from flaring gases containing methane.

The variable monitored with this procedure: D_{CH_4} .

Flare efficiency.

The operational procedure POP 8 – Flare efficiency was developed to monitoring and calculation of the flare efficiency.

The flare efficiency is monitored in compliance with manufactures specification.

According to the Tool to determine project emissions from flaring gases containing methane and the specification of the flare, the flare efficiency is calculated according to the following criteria:

- a) If the exhaust gas temperature is ≥ 500 °C for more than 40 minutes, the flare efficiency is 90% in the respective hour.
- b) If the exhaust gas temperature is ≤ 500 °C and ≥ 100 °C, the flare efficiency is 50% in the respective hour (*).

- c) If the exhaust gas temperature is $< 100\text{ }^{\circ}\text{C}$, or in absence of temperature, the flare efficiency is 0% (zero) in any respective hour (*).

Brascarbon developed the formulary 08.001 in the operational procedure to monitor the hourly flare efficiency according to the criteria above mentioned.

The variable monitored with this procedure: FE.

(*) according to the manufacturers specification

Biogas pressure.

The biogas pressure is obtained by a electronic equipment BIOGAS and procedures described in the operational procedure POP 13- Biogas pressure.

The operating pressure of the digester is atmospherically.

The operation of the equipment and the devices to be used is clearly described in the operational procedure as so as in the equipment manual.

All QA/QC procedures are described in the operational procedure related to the maintenance and/or calibration of the equipment.

The variable measured with this equipment is: P biogas.

The data monitored is controlled in the formulary 04.001.

Formulated feed rations.

Monitoring and controlling of the formulated feed rations used per animal category per confined feed animal operation.

The variable monitored: FFR.

Reference of the operational procedure: POP 14 – formulated feed rations monitoring.

Genetic Source.

Monitoring and controlling of the genetic source in the project activity per farm.

The variable monitored: GENETIC SOURCE.

Reference of the operational procedure: POP 15 – Genetic Source Monitoring.

Animal weight.

The animal weight is monitored and controlled by a formulary 16.001 where each animal category is monitored during the year, according to the operational procedure POP 16 – Animal Weight Monitoring.

Quarterly the data from the feed operations are checked and transferred to the formulary.

Records available in the feed operations will be copied and filed at Brascarbon office and attached with the formulary 16.001.

The variable monitored: W site.

Monitoring System

The monitoring system will be followed according to the Brascarbon Operations Procedures Manual, detailed to attend all necessary controls in the site to attend all monitoring parameters in the the approved methodology AMS.III.D – Version 15 – “*Methane recovery in animal manure management systems*” and IPCC 2006.

Operational / Monitoring Procedures

Operational / Monitoring procedures listed in the Annex 4.

Quality Assurance/Control: QA/QC

The measuring instruments will be calibrated by the manufacturers’ representatives on a manufacturer’s recommendation basis. The certification of calibration will be controlled by QA/QC officer. The QA/QC officer will be also responsible to assure that all Brascarbon Operations Procedures will be executed based in the Iso9000.

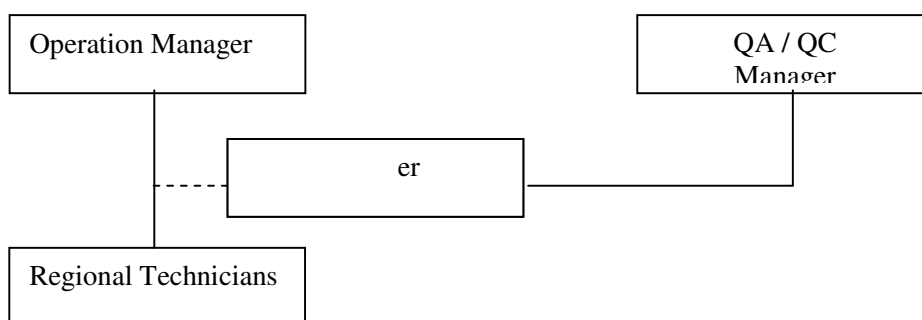
Training

The training of the technicians and all employees is provided by the Operations Manager. The topics of the training are as below:

1. General explanation of the project.
2. Explanation of the procedures of the Operations Procedure Manual.
3. Procedures and preparations for the star-up.
4. Maintenance procedures.
5. Biogas safety instructions.
6. Biogas measurement.
7. Safety Issues.

The training document and the equipment manuals are stored for easy reference in the Brascarbon office.

Organization



Operation Manager

Engineer, responsible for the project maintenance and monitoring data collection.

QA/QC Manager

Engineer, responsible for the monitoring operation and emissions reductions management for the project activity.

Regional Technicians

Technician, responsible for the monitoring and maintenance of the site projects according to the procedures in the Brascarbon Operations Procedure Manual.

QA/QC officer

Responsible to assure the quality control of the information and the CDM project documents.

Maintenance

For maintenance of the equipment and to attend the monitoring system, BRASCARBON will use the practices recommended by the equipment supplier for repairs, calibration, etc...

The regular maintenance in the site project boundary will be according to the Brascarbon Operation Procedures Manual for all items considered in the project such as the digester, flare, measuring systems, pipings, electrical parts and others.

B.8 Date of completion of the application of the baseline and monitoring methodology and the name of the responsible person(s)/entity(ies)

The methodology applied to this project activity is AMS-III,D,/Version 15, *Methane recovery in animal manure management systems*.

The simplified monitoring methodologies are applicable to this project activity because they provide a method to accurately measure and record the GHG emissions that will be captured and combusted by the project activity.

The completion date of the application of the baseline is 31/03/2009.

The entity determining this monitoring methodology is Brascarbon Consultoria, Projetos e Representação S/A, who is the project developer listed in Annex 1 of this document.

SECTION C. Duration of the project activity / crediting period
C.1 Duration of the project activity:
C.1.1. Starting date of the project activity:

The starting date for this activity is **18/01/2010**.

This date represents the prevision of the first contracted company to develop the first site construction.

**C.1.2. Expected operational lifetime of the project activity:**

The expected life for this project is **21 years and 0 months**.

C.2 Choice of the crediting period and related information:**C.2.1. Renewable crediting period****C.2.1.1. Starting date of the first crediting period:**

The starting date of the crediting period is: **01/01/2011 or the registration date of the project activity.**

C.2.1.2. Length of the first crediting period:

The length of the crediting period is **7 years and 0 months**,

C.2.2. Fixed crediting period:**C.2.2.1. Starting date:**

The project activity will not use a fixed period.

C.2.2.2. Length:

The project activity will not use a fixed period.

**SECTION D. Environmental impacts****D.1. If required by the host Party, documentation on the analysis of the environmental impacts of the project activity:**

An environmental impact analysis is not required for this type of GHG project activity. Beyond the principal environmental benefits of the project includes:

- reducing atmospheric emissions of volatile solids causing odour
- reducing the population of flies
- best control on the bio-security system
- reducing the possible spread of disease

D.2. If environmental impacts are considered significant by the project participants or the host Party, please provide conclusions and all references to support documentation of an environmental impact assessment undertaken in accordance with the procedures as required by the host Party:

Digesters, to reduce GHG emissions in the confined animals operations, are not pre-requisite to get the environmental licenses. The environmental impacts concerning the project activity is very significant because this project activity can contribute for the local and global sustainable development.

www.cnpsa.embrapa.br/sgc/sgc_publicacoes/publicacao_l4l77t4r.PDF
www.cnpsa.embrapa.br/sgc/sgc_publicacoes/publicacao_q9m29k2j.pdf
www.cnpsa.embrapa.br/sgc/sgc_publicacoes/publicacao_b889i6r.pdf
www.cnpsa.embrapa.br/sgc/sgc_publicacoes/publicacao_f6c34f6j.pdf

**SECTION E. Stakeholders' comments**

Brascarbon made a presentation of the CDM project activity at the city of São Gabriel do Oeste, Mato Grosso do Sul on January 17th, 2008. The presentation was held for the community involved in the project as so as swine producers, unions, cooperatives etc.

Brascarbon invited stakeholders to the meetings to explain the UNFCCC CDM process and proposed project activity. At the end of the presentation Brascarbon introduced a section of questions and answers for clarifications.

E.1. Brief description how comments by local stakeholders have been invited and compiled:

The invitation for the stakeholders' consultation for the project activity was done by personal mail asking for comments of the PDD attached to the Brascarbon site and also in the UNFCCC site, according to the Resolution 7 of the Brazilian DNA.

The following list of the stakeholders was invited to comment on the project activity according to the Resolution 7 of the Brazilian DNA:

- City Hall and Chamber of Councilors.
- Departments and Secretaries: municipal, state and federal.
- ONG's
- Unions.
- Ministry Public – State
- Ministry Public – Federal
- State
- Legislative Assembly

E.2. Summary of the comments received:

No comments and negative issues were raised by local stakeholders.

E.3. Report on how due account was taken of any comments received:

No comments were received from stakeholders.

**Annex 1****CONTACT INFORMATION ON PARTICIPANTS IN THE PROJECT ACTIVITY**

| | |
|------------------|--|
| Organization: | Brascarbon Consultoria, Projetos e Representação S/A. |
| Street/P,O,Box: | Rua Doutor Gentil Leite Martins |
| Building: | |
| City: | São Paulo |
| State/Region: | SP |
| Postfix/ZIP: | 04648-001 |
| Country: | Brazil |
| Telephone: | +55 11 5523 7059 |
| FAX: | +55 11 5523 7059 |
| E-Mail: | info@Brascarbon.com.br |
| URL: | www.Brascarbon.com.br |
| Represented by: | |
| Title: | Project Coordinator |
| Salutation: | Mr, |
| Last Name: | Lasas |
| Middle Name: | |
| First Name: | Luiz |
| Department: | Business Development |
| Mobile: | +55 11 9166 0256 |
| Direct FAX: | |
| Direct tel: | |
| Personal E-Mail: | luiz.lasas@Brascarbon.com.br |



Annex 2

INFORMATION REGARDING PUBLIC FUNDING

There is no official development assistance being provided for this project.

ANNEX 3 - BASELINE INFORMATION

| ID | Farm/Site | Animal Category | N _{LT,y} | W _{default} | W _{site} | VS _{default} | VS _{LT} | nd _y | VS _(LT,y) | UF _b | B _{0(T)} | GWP _{CH} | D _{CH} | MCF | MS _(T,S) | MS% _{i,y} | BE _y | PE _{PL,y} | PE _{flare,y} | PE _y | ER _y | ER 7 years | BE _y | BE _{7years} |
|----|-------------------------|-----------------|-------------------|----------------------|-------------------|-----------------------|------------------|-----------------|----------------------|-----------------|-------------------|-------------------|-----------------|-----|---------------------|--------------------|-----------------|--------------------|-----------------------|-----------------|-----------------|------------|-----------------|----------------------|
| 1 | Fazenda São Marcos | Sows | 800 | 198 | 230 | 0,46 | 0,53 | 365 | 195 | 0,94 | 0,45 | 21 | 0,00067 | 79 | 1 | 1 | 734 | 98,79 | 73,36 | 172 | 561 | 3.930,21 | 201 | 1407 |
| | | Finishers | 5.016 | 50 | 90 | 0,3 | 0,54 | 365 | 197 | 0,94 | 0,45 | 21 | 0,00067 | 79 | 1 | 1 | 4.648 | 625,94 | 464,82 | 1.091 | 3.557 | 24.902,20 | 1273 | 8914 |
| | | Nursery/Weaners | 3.405 | 50 | 20 | 0,3 | 0,12 | 365 | 44 | 0,94 | 0,45 | 21 | 0,00067 | 79 | 1 | 1 | 701 | 94,43 | 70,12 | 165 | 537 | 3.756,80 | 192 | 1345 |
| | | Boars | 8 | 50 | 240 | 0,3 | 1,44 | 365 | 526 | 0,94 | 0,45 | 21 | 0,00067 | 79 | 1 | 1 | 20 | 2,66 | 1,98 | 5 | 15 | 105,92 | 5 | 38 |
| | | Gilts | 240 | 198 | 210 | 0,46 | 0,49 | 365 | 178 | 0,94 | 0,45 | 21 | 0,00067 | 79 | 1 | 1 | 201 | 27,06 | 20,09 | 47 | 154 | 1.076,54 | 55 | 385 |
| | | total | 9.469 | | | | | | | | | | | | | | 6.304 | 849 | 630 | 1.479 | 4.825 | 33.771,66 | 1727 | 12.089 |
| 2 | Granja Rancho Fundo | Sows | - | 198 | 230 | 0,46 | 0,53 | 365 | 195 | 0,94 | 0,45 | 21 | 0,00067 | 79 | 1 | 1 | - | - | - | - | - | - | 0 | 0 |
| | | Finishers | 4.438 | 50 | 90 | 0,3 | 0,54 | 365 | 197 | 0,94 | 0,45 | 21 | 0,00067 | 79 | 1 | 1 | 4.112 | 553,79 | 411,24 | 965 | 3.147 | 22.031,76 | 1127 | 7887 |
| | | Nursery/Weaners | - | 50 | 20 | 0,3 | 0,12 | 365 | 44 | 0,94 | 0,45 | 21 | 0,00067 | 79 | 1 | 1 | - | - | - | - | - | - | 0 | 0 |
| | | Boars | - | 50 | 240 | 0,3 | 1,44 | 365 | 526 | 0,94 | 0,45 | 21 | 0,00067 | 79 | 1 | 1 | - | - | - | - | - | - | 0 | 0 |
| | | Gilts | - | 198 | 210 | 0,46 | 0,49 | 365 | 178 | 0,94 | 0,45 | 21 | 0,00067 | 79 | 1 | 1 | - | - | - | - | - | - | 0 | 0 |
| | | total | 4.438 | | | | | | | | | | | | | | 4.112 | 554 | 411 | 965 | 3.147 | 22.031,76 | 1127 | 7.887 |
| 3 | Lote 13 | Sows | - | 198 | 230 | 0,46 | 0,53 | 365 | 195 | 0,94 | 0,45 | 21 | 0,00067 | 79 | 1 | 1 | - | - | - | - | - | - | 0 | 0 |
| | | Finishers | 4.755 | 50 | 90 | 0,3 | 0,54 | 365 | 197 | 0,94 | 0,45 | 21 | 0,00067 | 79 | 1 | 1 | 4.406 | 593,34 | 440,62 | 1.034 | 3.372 | 23.605,46 | 1207 | 8450 |
| | | Nursery/Weaners | - | 50 | 20 | 0,3 | 0,12 | 365 | 44 | 0,94 | 0,45 | 21 | 0,00067 | 79 | 1 | 1 | - | - | - | - | - | - | 0 | 0 |
| | | Boars | - | 50 | 240 | 0,3 | 1,44 | 365 | 526 | 0,94 | 0,45 | 21 | 0,00067 | 79 | 1 | 1 | - | - | - | - | - | - | 0 | 0 |
| | | Gilts | - | 198 | 210 | 0,46 | 0,49 | 365 | 178 | 0,94 | 0,45 | 21 | 0,00067 | 79 | 1 | 1 | - | - | - | - | - | - | 0 | 0 |
| | | total | 4.755 | | | | | | | | | | | | | | 4.406 | 593 | 441 | 1.034 | 3.372 | 23.605,46 | 1207 | 8.450 |
| 4 | Fazenda Cachoeira Parte | Sows | - | 198 | 230 | 0,46 | 0,53 | 365 | 195 | 0,94 | 0,45 | 21 | 0,00067 | 79 | 1 | 1 | - | - | - | - | - | - | 0 | 0 |
| | | Finishers | 4.438 | 50 | 90 | 0,3 | 0,54 | 365 | 197 | 0,94 | 0,45 | 21 | 0,00067 | 79 | 1 | 1 | 4.112 | 553,79 | 411,24 | 965 | 3.147 | 22.031,76 | 1127 | 7887 |
| | | Nursery/Weaners | - | 50 | 20 | 0,3 | 0,12 | 365 | 44 | 0,94 | 0,45 | 21 | 0,00067 | 79 | 1 | 1 | - | - | - | - | - | - | 0 | 0 |
| | | Boars | - | 50 | 240 | 0,3 | 1,44 | 365 | 526 | 0,94 | 0,45 | 21 | 0,00067 | 79 | 1 | 1 | - | - | - | - | - | - | 0 | 0 |
| | | Gilts | - | 198 | 210 | 0,46 | 0,49 | 365 | 178 | 0,94 | 0,45 | 21 | 0,00067 | 79 | 1 | 1 | - | - | - | - | - | - | 0 | 0 |
| | | total | 4.438 | | | | | | | | | | | | | | 4.112 | 554 | 411 | 965 | 3.147 | 22.031,76 | 1127 | 7.887 |
| 5 | Fazenda CE Quinhão A | Sows | - | 198 | 230 | 0,46 | 0,53 | 365 | 195 | 0,94 | 0,45 | 21 | 0,00067 | 79 | 1 | 1 | - | - | - | - | - | - | 0 | 0 |
| | | Finishers | 4.755 | 50 | 90 | 0,3 | 0,54 | 365 | 197 | 0,94 | 0,45 | 21 | 0,00067 | 79 | 1 | 1 | 4.406 | 593,34 | 440,62 | 1.034 | 3.372 | 23.605,46 | 1207 | 8450 |
| | | Nursery/Weaners | - | 50 | 20 | 0,3 | 0,12 | 365 | 44 | 0,94 | 0,45 | 21 | 0,00067 | 79 | 1 | 1 | - | - | - | - | - | - | 0 | 0 |
| | | Boars | - | 50 | 240 | 0,3 | 1,44 | 365 | 526 | 0,94 | 0,45 | 21 | 0,00067 | 79 | 1 | 1 | - | - | - | - | - | - | 0 | 0 |
| | | Gilts | - | 198 | 210 | 0,46 | 0,49 | 365 | 178 | 0,94 | 0,45 | 21 | 0,00067 | 79 | 1 | 1 | - | - | - | - | - | - | 0 | 0 |
| | | total | 4.755 | | | | | | | | | | | | | | 4.406 | 593 | 441 | 1.034 | 3.372 | 23.605,46 | 1207 | 8.450 |

ANNEX 3 - BASELINE INFORMATION (CONTINUATION)

| ID | Farm/Site | Animal Category | N _{L,T,y} | W _{default} | W _{site} | VS _{default} | VS _{LT} | nd _y | VS _{L,T,y} | UF _b | B _{0(T)} | GWP _{CH} | D _{CH} | MCF | MS _{T,S,N} | MS% _{i,y} | BE _y | PE _{PL,y} | PE _{flare,y} | PE _y | ER _y | ER _{7 years} | BE _y | BE _{7 years} |
|----|---------------------------------|-----------------|--------------------|----------------------|-------------------|-----------------------|------------------|-----------------|---------------------|-----------------|-------------------|-------------------|-----------------|-----|---------------------|--------------------|-----------------|--------------------|-----------------------|-----------------|-----------------|-----------------------|-----------------|-----------------------|
| 6 | Lote 29 Assentamento Campanário | Sows | - | 198 | 230 | 0,46 | 0,53 | 365 | 195 | 0,94 | 0,45 | 21 | 0,00067 | 79 | 1 | 1 | - | - | - | - | - | - | 0 | 0 |
| | | Finishers | 4.358 | 50 | 90 | 0,3 | 0,54 | 365 | 197 | 0,94 | 0,45 | 21 | 0,00067 | 79 | 1 | 1 | 4.038 | 543,82 | 403,84 | 948 | 3.091 | 21.635,42 | 1106 | 7745 |
| | | Nursery/Weaners | - | 50 | 20 | 0,3 | 0,12 | 365 | 44 | 0,94 | 0,45 | 21 | 0,00067 | 79 | 1 | 1 | - | - | - | - | - | - | 0 | 0 |
| | | Boars | - | 50 | 240 | 0,3 | 1,44 | 365 | 526 | 0,94 | 0,45 | 21 | 0,00067 | 79 | 1 | 1 | - | - | - | - | - | - | 0 | 0 |
| | | Gilts | - | 198 | 210 | 0,46 | 0,49 | 365 | 178 | 0,94 | 0,45 | 21 | 0,00067 | 79 | 1 | 1 | - | - | - | - | - | - | 0 | 0 |
| | | total | 4.358 | | | | | | | | | | | | | | 4.038 | 544 | 404 | 948 | 3.091 | 21.635,42 | 1106 | 7.745 |
| 7 | Fazenda Nossa Senhora Aparecida | Sows | - | 198 | 230 | 0,46 | 0,53 | 365 | 195 | 0,94 | 0,45 | 21 | 0,00067 | 79 | 1 | 1 | - | - | - | - | - | - | 0 | 0 |
| | | Finishers | 4.358 | 50 | 90 | 0,3 | 0,54 | 365 | 197 | 0,94 | 0,45 | 21 | 0,00067 | 79 | 1 | 1 | 4.038 | 543,82 | 403,84 | 948 | 3.091 | 21.635,42 | 1106 | 7745 |
| | | Nursery/Weaners | - | 50 | 20 | 0,3 | 0,12 | 365 | 44 | 0,94 | 0,45 | 21 | 0,00067 | 79 | 1 | 1 | - | - | - | - | - | - | 0 | 0 |
| | | Boars | - | 50 | 240 | 0,3 | 1,44 | 365 | 526 | 0,94 | 0,45 | 21 | 0,00067 | 79 | 1 | 1 | - | - | - | - | - | - | 0 | 0 |
| | | Gilts | - | 198 | 210 | 0,46 | 0,49 | 365 | 178 | 0,94 | 0,45 | 21 | 0,00067 | 79 | 1 | 1 | - | - | - | - | - | - | 0 | 0 |
| | | total | 4.358 | | | | | | | | | | | | | | 4.038 | 544 | 404 | 948 | 3.091 | 21.635,42 | 1106 | 7.745 |
| 8 | Fazenda Cachoeira | Sows | - | 198 | 230 | 0,46 | 0,53 | 365 | 195 | 0,94 | 0,45 | 21 | 0,00067 | 79 | 1 | 1 | - | - | - | - | - | - | 0 | 0 |
| | | Finishers | 4.358 | 50 | 90 | 0,3 | 0,54 | 365 | 197 | 0,94 | 0,45 | 21 | 0,00067 | 79 | 1 | 1 | 4.038 | 543,82 | 403,84 | 948 | 3.091 | 21.635,42 | 1106 | 7745 |
| | | Nursery/Weaners | - | 50 | 20 | 0,3 | 0,12 | 365 | 44 | 0,94 | 0,45 | 21 | 0,00067 | 79 | 1 | 1 | - | - | - | - | - | - | 0 | 0 |
| | | Boars | - | 50 | 240 | 0,3 | 1,44 | 365 | 526 | 0,94 | 0,45 | 21 | 0,00067 | 79 | 1 | 1 | - | - | - | - | - | - | 0 | 0 |
| | | Gilts | - | 198 | 210 | 0,46 | 0,49 | 365 | 178 | 0,94 | 0,45 | 21 | 0,00067 | 79 | 1 | 1 | - | - | - | - | - | - | 0 | 0 |
| | | total | 4.358 | | | | | | | | | | | | | | 4.038 | 544 | 404 | 948 | 3.091 | 21.635,42 | 1106 | 7.745 |
| 9 | Fazenda Capim Branco | Sows | - | 198 | 230 | 0,46 | 0,53 | 365 | 195 | 0,94 | 0,45 | 21 | 0,00067 | 79 | 1 | 1 | - | - | - | - | - | - | 0 | 0 |
| | | Finishers | 4.358 | 50 | 90 | 0,3 | 0,54 | 365 | 197 | 0,94 | 0,45 | 21 | 0,00067 | 79 | 1 | 1 | 4.038 | 543,82 | 403,84 | 948 | 3.091 | 21.635,42 | 1106 | 7745 |
| | | Nursery/Weaners | - | 50 | 20 | 0,3 | 0,12 | 365 | 44 | 0,94 | 0,45 | 21 | 0,00067 | 79 | 1 | 1 | - | - | - | - | - | - | 0 | 0 |
| | | Boars | - | 50 | 240 | 0,3 | 1,44 | 365 | 526 | 0,94 | 0,45 | 21 | 0,00067 | 79 | 1 | 1 | - | - | - | - | - | - | 0 | 0 |
| | | Gilts | - | 198 | 210 | 0,46 | 0,49 | 365 | 178 | 0,94 | 0,45 | 21 | 0,00067 | 79 | 1 | 1 | - | - | - | - | - | - | 0 | 0 |
| | | total | 4.358 | | | | | | | | | | | | | | 4.038 | 544 | 404 | 948 | 3.091 | 21.635,42 | 1106 | 7.745 |
| 10 | Faz São Sebastião - G 05 | Sows | - | 198 | 230 | 0,46 | 0,53 | 365 | 195 | 0,94 | 0,45 | 21 | 0,00067 | 79 | 1 | 1 | - | - | - | - | - | - | 0 | 0 |
| | | Finishers | 2.034 | 50 | 90 | 0,3 | 0,54 | 365 | 197 | 0,94 | 0,45 | 21 | 0,00067 | 79 | 1 | 1 | 1.885 | 253,83 | 188,49 | 442 | 1.443 | 10.098,21 | 516 | 3615 |
| | | Nursery/Weaners | - | 50 | 20 | 0,3 | 0,12 | 365 | 44 | 0,94 | 0,45 | 21 | 0,00067 | 79 | 1 | 1 | - | - | - | - | - | - | 0 | 0 |
| | | Boars | - | 50 | 240 | 0,3 | 1,44 | 365 | 526 | 0,94 | 0,45 | 21 | 0,00067 | 79 | 1 | 1 | - | - | - | - | - | - | 0 | 0 |
| | | Gilts | - | 198 | 210 | 0,46 | 0,49 | 365 | 178 | 0,94 | 0,45 | 21 | 0,00067 | 79 | 1 | 1 | - | - | - | - | - | - | 0 | 0 |
| | | total | 2.034 | | | | | | | | | | | | | | 1.885 | 254 | 188 | 442 | 1.443 | 10.098,21 | 516 | 3.615 |

ANNEX 3 - BASELINE INFORMATION (CONTINUATION)

| ID | Farm/Site | Animal Category | N _{L,T,y} | W _{default} | W _{site} | VS _{default} | VS _{LT} | nd _y | VS _(LT,y) | UF _b | B _{0(T)} | GWP _{CH4} | D _{CH4} | MCF | MS _(T,S,K) | MS% _{i,y} | BE _y | PE _{PL,y} | PE _{flare,y} | PE _y | ER _y | ER 7 years | BE _y | BE 7 years |
|----|---|-----------------|--------------------|----------------------|-------------------|-----------------------|------------------|-----------------|----------------------|-----------------|-------------------|--------------------|------------------|-----|-----------------------|--------------------|-----------------|--------------------|-----------------------|-----------------|-----------------|------------|-----------------|------------|
| 11 | Faz. São Sebastião - G 06 | Sows | - | 198 | 230 | 0,46 | 0,53 | 365 | 195 | 0,94 | 0,45 | 21 | 0,00067 | 79 | 1 | 1 | - | - | - | - | - | - | 0 | 0 |
| | | Finishers | 2.219 | 50 | 90 | 0,3 | 0,54 | 365 | 197 | 0,94 | 0,45 | 21 | 0,00067 | 79 | 1 | 1 | 2.057 | 276,94 | 205,66 | 483 | 1.574 | 11.017,72 | 563 | 3944 |
| | | Nursery/Weaners | - | 50 | 20 | 0,3 | 0,12 | 365 | 44 | 0,94 | 0,45 | 21 | 0,00067 | 79 | 1 | 1 | - | - | - | - | - | - | 0 | 0 |
| | | Boars | - | 50 | 240 | 0,3 | 1,44 | 365 | 526 | 0,94 | 0,45 | 21 | 0,00067 | 79 | 1 | 1 | - | - | - | - | - | - | 0 | 0 |
| | | Gilts | - | 198 | 210 | 0,46 | 0,49 | 365 | 178 | 0,94 | 0,45 | 21 | 0,00067 | 79 | 1 | 1 | - | - | - | - | - | - | 0 | 0 |
| | | total | 2.219 | | | | | | | | | | | | | | 2.057 | 277 | 206 | 483 | 1.574 | 11.017,72 | 563 | 3.944 |
| 12 | Assentamento Campanário - Lote 88 | Sows | - | 198 | 230 | 0,46 | 0,53 | 365 | 195 | 0,94 | 0,45 | 21 | 0,00067 | 79 | 1 | 1 | - | - | - | - | - | - | 0 | 0 |
| | | Finishers | 2.237 | 50 | 90 | 0,3 | 0,54 | 365 | 197 | 0,94 | 0,45 | 21 | 0,00067 | 79 | 1 | 1 | 2.073 | 279,21 | 207,34 | 487 | 1.587 | 11.108,04 | 568 | 3976 |
| | | Nursery/Weaners | - | 50 | 20 | 0,3 | 0,12 | 365 | 44 | 0,94 | 0,45 | 21 | 0,00067 | 79 | 1 | 1 | - | - | - | - | - | - | 0 | 0 |
| | | Boars | - | 50 | 240 | 0,3 | 1,44 | 365 | 526 | 0,94 | 0,45 | 21 | 0,00067 | 79 | 1 | 1 | - | - | - | - | - | - | 0 | 0 |
| | | Gilts | - | 198 | 210 | 0,46 | 0,49 | 365 | 178 | 0,94 | 0,45 | 21 | 0,00067 | 79 | 1 | 1 | - | - | - | - | - | - | 0 | 0 |
| | | total | 2.237 | | | | | | | | | | | | | | 2.073 | 279 | 207 | 487 | 1.587 | 11.108,04 | 568 | 3.976 |
| 13 | Granja Potreiroito | Sows | 2.000 | 198 | 230 | 0,46 | 0,53 | 365 | 195 | 0,94 | 0,45 | 21 | 0,00067 | 79 | 1 | 1 | 1.834 | 246,97 | 183,40 | 430 | 1.404 | 9.825,54 | 502 | 3517 |
| | | Finishers | 12.538 | 50 | 90 | 0,3 | 0,54 | 365 | 197 | 0,94 | 0,45 | 21 | 0,00067 | 79 | 1 | 1 | 11.620 | 1.564,72 | 1.161,96 | 2.727 | 8.893 | 62.250,44 | 3183 | 22284 |
| | | Nursery/Weaners | 9.457 | 50 | 20 | 0,3 | 0,12 | 365 | 44 | 0,94 | 0,45 | 21 | 0,00067 | 79 | 1 | 1 | 1.948 | 262,27 | 194,77 | 457 | 1.491 | 10.434,28 | 534 | 3735 |
| | | Boars | 20 | 50 | 240 | 0,3 | 1,44 | 365 | 526 | 0,94 | 0,45 | 21 | 0,00067 | 79 | 1 | 1 | 49 | 6,66 | 4,94 | 12 | 38 | 264,79 | 14 | 95 |
| | | Gilts | 600 | 198 | 210 | 0,46 | 0,49 | 365 | 178 | 0,94 | 0,45 | 21 | 0,00067 | 79 | 1 | 1 | 502 | 67,65 | 50,24 | 118 | 384 | 2.691,34 | 138 | 963 |
| | | total | 24.616 | | | | | | | | | | | | | | 15.953 | 2.148 | 1.595 | 3.744 | 12.209 | 85.466,39 | 4371 | 30.595 |
| 14 | Granja Arco - Íris - Faz. Laranja Azeda | Sows | - | 198 | 230 | 0,46 | 0,53 | 365 | 195 | 0,94 | 0,45 | 21 | 0,00067 | 79 | 1 | 1 | - | - | - | - | - | - | 0 | 0 |
| | | Finishers | 7.322 | 50 | 90 | 0,3 | 0,54 | 365 | 197 | 0,94 | 0,45 | 21 | 0,00067 | 79 | 1 | 1 | 6.786 | 913,78 | 678,57 | 1.592 | 5.193 | 36.353,57 | 1859 | 13014 |
| | | Nursery/Weaners | - | 50 | 20 | 0,3 | 0,12 | 365 | 44 | 0,94 | 0,45 | 21 | 0,00067 | 79 | 1 | 1 | - | - | - | - | - | - | 0 | 0 |
| | | Boars | - | 50 | 240 | 0,3 | 1,44 | 365 | 526 | 0,94 | 0,45 | 21 | 0,00067 | 79 | 1 | 1 | - | - | - | - | - | - | 0 | 0 |
| | | Gilts | - | 198 | 210 | 0,46 | 0,49 | 365 | 178 | 0,94 | 0,45 | 21 | 0,00067 | 79 | 1 | 1 | - | - | - | - | - | - | 0 | 0 |
| | | total | 7.322 | | | | | | | | | | | | | | 6.786 | 914 | 679 | 1.592 | 5.193 | 36.353,57 | 1859 | 13.014 |
| 15 | Fazenda Santa Cecília | Sows | 200 | 198 | 230 | 0,46 | 0,53 | 365 | 195 | 0,94 | 0,45 | 21 | 0,00067 | 79 | 1 | 1 | 183 | 24,70 | 18,34 | 43 | 140 | 982,55 | 50 | 352 |
| | | Finishers | 1.254 | 50 | 90 | 0,3 | 0,54 | 365 | 197 | 0,94 | 0,45 | 21 | 0,00067 | 79 | 1 | 1 | 1.162 | 156,48 | 116,21 | 273 | 889 | 6.225,55 | 318 | 2229 |
| | | Nursery/Weaners | 946 | 50 | 20 | 0,3 | 0,12 | 365 | 44 | 0,94 | 0,45 | 21 | 0,00067 | 79 | 1 | 1 | 195 | 26,23 | 19,48 | 46 | 149 | 1.043,55 | 53 | 374 |
| | | Boars | 6 | 50 | 240 | 0,3 | 1,44 | 365 | 526 | 0,94 | 0,45 | 21 | 0,00067 | 79 | 1 | 1 | 15 | 2,00 | 1,48 | 3 | 11 | 79,44 | 4 | 28 |
| | | Gilts | 60 | 198 | 210 | 0,46 | 0,49 | 365 | 178 | 0,94 | 0,45 | 21 | 0,00067 | 79 | 1 | 1 | 50 | 6,76 | 5,02 | 12 | 38 | 269,13 | 14 | 96 |
| | | total | 2.466 | | | | | | | | | | | | | | 1.605 | 216 | 161 | 377 | 1.229 | 8.600,23 | 440 | 3.079 |

Annex 4

MONITORING INFORMATION

The following table presents the explanation of the QA/QC procedures of the monitoring plan followed by BRASCARBON in order to achieve certified emission reductions, after each validation and verification process:

| ID | DATA VARIABLE | UNCERTAINTY LEVEL | DATA UNIT | DATA ORIGIN |
|----|-----------------------------|-------------------|--------------------------|--|
| 1 | T f | Low | °C | Register from the measurement system, information managed by Brascarbon, |
| 2 | Site Inspection | Low | ----- | Register information managed by Brascarbon |
| 3 | N _{LT,y} | Low | Nr, Of heads by category | Register from the measurement system, information managed by Brascarbon, |
| 4 | BG _{burned,y} | Low | m ³ | Register from the measurement system, information managed by Brascarbon, |
| 5 | W _{CH₄} | Low | % | Register from the measurement system, information managed by Brascarbon, |
| 6 | T _{biogas} | Low | °C | Register from the measurement system, information managed by Brascarbon, |
| 7 | D _{CH₄} | Low | t/m ³ | Register from the measurement system, information managed by Brascarbon, |
| 8 | FE | Low | % | Register information managed by Brascarbon, |
| 9 | QDM | Low | --- | Register from the measurement system, information managed by Brascarbon, |
| 10 | W site | Low | Kg | Register from the measurement system, information managed by Brascarbon, |
| 11 | ER _{y,ex-post} | Low | Tons CO ₂ e | Register from the measurement system, information managed by Brascarbon, |
| 12 | FFR | Low | ----- | Register from the measurement system, information managed by Brascarbon, |
| 13 | P biogas | Low | mbar | Register information managed by Brascarbon. |
| 14 | Genetic Source | Low | ----- | Register information managed by Brascarbon. |
| 15 | MS% i,y | Low | % | Register information managed by Brascarbon. |
| 16 | N day,y | Low | days | Register information managed by Brascarbon. |
| 17 | N p,y | Low | Nr, Of heads by category | Register information managed by Brascarbon. |

BRASCARBON has implemented a Operation Procedures Manual and formularies to capture and report monitoring data and maintenance activities throughout the project lifecycle. On-site assessment, supplier production data, task tracking, and post-implementation auditing tools have been developed to ensure accurate, consistent, and complete data gathering and project implementation.

By coupling these capabilities with an ISO-based quality and environmental management system, BRASCARBON enables transparent data collection and verification.

Procedures from Brascarbon Operation Procedures Manual to ensure accurate and consistent data for monitoring system have been developed as indicated in the following table:

| ID | DATA/ PARAMETERS/TITLE | FREQUENCY | RESPONSIBLE | PROCEDURE | COMENTS |
|----|--|-------------|-------------|-----------|--|
| 1 | T_f | M | TR | POP 1 | Flare Temperature |
| 2 | SITE INSPECTION $MS\%_{i,y}$ | A | TR | POP 2 | General site Inspection |
| 3 | $N_{LT,y}$ $N_{Day,y}$ $N_{p,y}$ | M | TR | POP 3 | Number of heads |
| 4 | $BG_{burnt,y}$ | M | TR | POP 4 | Biogas produced and burnt |
| 5 | $W_{CH_4,y}$ | TBD | TR | POP 5 | Methane content |
| 6 | T_{biogas} | M | TR | POP 6 | Biogas Temperature |
| 7 | D_{CH_4} | M | TR | POP 7 | Methane Density |
| 8 | FE | M | TR | POP 8 | Flare Efficiency |
| 9 | QDM | Every Batch | TR | POP 9 | Sludge Mass |
| 10 | ER | A | QC | POP 10 | Emission reduction calculation |
| 11 | TRAINING | A | OM | POP 11 | General training of procedures and safety issues |
| 12 | MAINTENANCE | S | OM | POP 12 | Up-date of the maintenance activities |
| 13 | P_{biogas} | M | TR | POP 13 | Biogas pressure |
| 14 | FFR | M | TR | POP 14 | Formulated Feed Rations |
| 15 | GENETIC SOURCE | A | TR | POP 15 | Genetic source |
| 16 | W_{site} | Q | TR | POP 16 | Average animal weight |
| 17 | ER ex-post | A | QC | POP 17 | Yearly emissions reductions ex-post |

Legend:

A: Annually

Q: Quarterly

M: Monthly

S: Semesterly

TR: Regional Technician

QC: Quality Control

TBD: to be determinate to attend 95% confidence level

OM: Operation Manger