

AWMS METHANE RECOVERY PROJECT BR06-S-30, MATO GROSSO AND MATO GROSSO DO SUL BRAZIL

UNFCCC Clean Development Mechanism
Simplified Project Design Document
for
Small Scale Project Activity



**DOCUMENT ID: BR06-S-30
VER 5, 14 NOV 2007**

CDM – Executive Board

<p>CLEAN DEVELOPMENT MECHANISM PROJECT DESIGN DOCUMENT FORM (CDM-SSC-PDD) Version 03 - in effect as of: 22 December 2006</p>

CONTENTS

- A. General description of the small scale project activity
- B. Application of a baseline and monitoring methodology
- C. Duration of the project activity / crediting period
- D. Environmental impacts
- E. Stakeholders' comments

Annexes

- Annex 1: Contact information on participants in the proposed small scale project activity
- Annex 2: Information regarding public funding
- Annex 3: Baseline information
- Annex 4: Monitoring Information

CDM – Executive Board**Revision history of this document**

Version Number	Date	Description and reason of revision
01	21 January 2003	Initial adoption
02	8 July 2005	<ul style="list-style-type: none">• The Board agreed to revise the CDM SSC PDD to reflect guidance and clarifications provided by the Board since version 01 of this document.• As a consequence, the guidelines for completing CDM SSC PDD have been revised accordingly to version 2. The latest version can be found at http://cdm.unfccc.int/Reference/Documents.
03	22 December 2006	<ul style="list-style-type: none">• The Board agreed to revise the CDM project design document for small-scale activities (CDM-SSC-PDD), taking into account CDM-PDD and CDM-NM.

CDM – Executive Board

SECTION A. General description of small-scale project activity**A.1 Title of the small-scale project activity:**

AWMS Methane Recovery Project BR06-S-30, **Mato Grosso** and **Mato Grosso do Sul, Brazil**, Ver 05, 14 November 2007.

A.2. Description of the small-scale project activity:

Purpose: The purpose of this project is to mitigate and recover animal effluent related GHG by improving AWMS practices.

Worldwide, agricultural operations are becoming progressively more intensive to realize economies of production and scale. The pressure to become more efficient drives significant operational similarities between farms of a “type,” as inputs, outputs, practices, genetics, and technology have become similar around the world.

This is especially true in livestock operations (swine, dairy cows, etc.) which can create profound environmental consequences, such as greenhouse gas emissions, odour, and water/land contamination (including seepage, runoff, and over application), that result from storing (and disposing of) animal waste. Confined Animal Feeding Operations (CAFOs) use similar Animal Waste Management System (AWMS) options to store animal effluent. These systems emit both methane (CH₄) and nitrous oxide (N₂O) resulting from both aerobic and anaerobic decomposition processes.

Explanation of GHG emission reductions: This project proposes to apply the Methane Recovery methodology identified in Section III.D, of the Indicative Simplified Baseline and Monitoring Methodologies for Small-Scale CDM Project Activity Categories, to swine CAFOs located in **Mato Grosso** and **Mato Grosso do Sul**, Brazil. The proposed project activities will mitigate and recover AWMS GHG emissions in an economically sustainable manner, and will result in other environmental benefits, such as improved water quality and reduced odour. In simple terms, the project proposes to move from a high-GHG AWMS practice, an open air lagoon, to a lower-GHG AWMS practice, an anaerobic digester with capture and combustion of resulting biogas.

Contribution to sustainable development: According to Brazil’s *Inter-Ministerial Commission on Global Climatic Change*,¹ manure management is an important issue that needs to be solved. Failure to do so will allow existing problems (e.g., increased (insect) pest populations, problems with allergies and livestock disease, including foot-and-mouth disease (FMD) which exists in Brazil), to continue unabated. To this end, Brazil has in recent years required all CAFOs to transition from single to multi-lagoon systems, and even more recently has required them to line the bottom of their primary sedimentation lagoon to prevent effluent seepage.²

¹ <http://www.ambientebrasil.com.br>

² A re-lined lagoon typically delivers a nominal 20-30 years of performance. For additional data refer to: R.J. McMillan, et al, “Studies of Seepage Beneath Earthen Manure Storages and Cattle Pens in Manitoba,” Manuscript in Preparation, University of Manitoba & The Water Branch of Manitoba; Ground Water Monitoring & Assessment Program, (2001) “Effects of Liquid Manure Storage Systems on Ground Water Quality,” Minnesota Pollution Control Agency; American Society of Agricultural Engineers, (2003) “Seepage Losses From Animal Waste Lagoons: A Summary of a Four Year Investigation in Kansas”, Technical Library

CDM – Executive Board

Establishing a positive model for livestock operations is essential. In 2005, the swine population in Brazil was 34,063,934.³ In 2005, the swine population of **Mato Grosso** and **Mato Grosso do Sul** was approximately 2.15 million heads.⁴ Considering that a typical hog produces 5.8 kilograms of effluent daily (Table A1), some 4.55 million metric tons of hog waste is produced annually in **Mato Grosso** and **Mato Grosso do Sul** alone. Introducing progressive AWMS practices throughout **Mato Grosso** and **Mato Grosso do Sul** has the potential to reduce approximately 1.35 million tonnes⁵ of carbon dioxide equivalent (CO₂e) each year.

Table A1. Daily production of effluent by type of porcine⁶

Stage	Manure kg/day	Manure and Urine kg/day	Volume litres/day	Volume m ³ /animal/month
25-100 kg	2.3	4.9	7.0	.25
Gestating sows	3.6	11.0	16.0	.48
Nursing sows	6.4	18.0	27.0	.81
Boar pig	3.0	6.0	9.0	.28
Piglet	0.35	0.95	1.4	.05
Average	2.35	5.8	8.6	.27

The proper handling of this large quantity of CAFO animal waste is critical to protecting human health and the environment. Because of the practices employed by farmers, the design, location, and management of livestock operations are critical components in ensuring an adequate level of protection of human health and the environment.⁷

This project activity will have positive effects on the local environment by improving air quality (i.e., reducing the emission of Volatile Organic Compounds (VOCs) and odour) and will set the stage for future on-farm projects (i.e., changes in land application practices) that will have an additional positive impact on GHG emissions with an attendant potential for reducing groundwater contamination problems.

This project activity will also increase local employment of skilled labour for the fabrication, installation, operation and maintenance of the specialized equipment. Finally, this voluntary project activity will establish a model for world-class, scalable animal waste management practices, which can be duplicated on other CAFO livestock farms throughout Brazil, dramatically reducing livestock related GHG and providing the potential for a new source of revenue and green power.

The proposed methane recovery project uniquely satisfies the Brazilian government priorities for environmental stewardship and sustainability while positioning rural agricultural operations to develop and use renewable (“green”) power. Indeed, it does so with no negative consequences and with a series of environmental and infrastructure co-benefits.

³ ftp://ftp.ibge.gov.br/Producao_Pecuaria/Producao_da_Pecuaria_Municipal_%5Banual%5D/2004/grandes_regioes_Ufs.zip

⁴ ftp://ftp.ibge.gov.br/Producao_Pecuaria/Producao_da_Pecuaria_Municipal_%5Banual%5D/2004/grandes_regioes_Ufs.zip

⁵ Approximate calculation using IPCC model and emission factors.

⁶ Kruger I, Taylor G, Ferrier M (eds) (1995) ‘Australian pig housing series: effluent at work’ (NSW Agriculture: Tamworth). Another outstanding reference for manure output is: Lorimor, Powers, et.al “Manure Characteristics”, Manure Management Series, MWPS-18, Section 1; pg 12.

⁷ Speir, Jerry; Bowden, Marie-Ann; Ervin, David; McElfish, Jim; Espejo, Rosario Perez, “Comparative Standards for Intensive Livestock Operations in Canada, Mexico, and the U.S.,” Paper prepared for the Commission for Environmental Cooperation.

CDM – Executive Board

Because the proposed project establishes an advanced AWMS the project participants believe the farm managers will adopt – and continue to practice – AWMS practice changes that result in meaningful, and permanent, GHG emission reductions beyond the project's expected lifespan.

A.3. Project participants:

Name of Party involved (*) (host) indicates a host Party	Private and/or public entity(ies) project participants (*) (as applicable)	Kindly indicate if the Party involved wishes to be considered as project participant (Yes/No)
Brazil (host)	<ul style="list-style-type: none"> AgCert Do Brasil Solucoes Ambientais Ltda. 	No

A.4. Technical description of the small-scale project activity:**A.4.1. Location of the small-scale project activity:****A.4.1.1. Host Party(ies):**

The host party for this project activity is **Brazil**.

A.4.1.2. Region/State/Province etc.:

The project will be located in **Mato Grosso** and **Mato Grosso do Sul**.

A.4.1.3. City/Town/Community etc:

The project sites are shown in Figure A1 with specifics detailed in Table A1.

A.4.1.4. Details of physical location, including information allowing the unique identification of this small-scale project activity :

The physical location of each of the sites involved in this project activity is shown in Figure A1 and listed in Table A2.

COOASGO owns one farrowing/nurser operation in Mato Grosso do Sul:

- Fazenda Jabuti (21212) had approximately 1,015 animals on site between September 2004 and August 2005. Over ten years, the producer expects an increase of 550 sows for the first two years and an increase of 650 sows over the remaining eight years. A total of six containment areas use the scraper or flush methods of manure removal. Waste flows from all six containment areas through three open lagoons in succession. Surface spread is used to dispose of effluent. The biodigester consists of two cells (27m x 9m x 4m and 8m x 8m x 4m). Construction was completed in December 2005.

CDM – Executive Board

Bruno Willemann Okida owns one farrowing/nurser operation in Mato Grosso do Sul:

- Fazenda Santa Tereza (2008024) had approximately 4,435 animals on site between April 2005 and March 2006. Over ten years, the producer expects a 20% growth for the first two years and a 5% growth over the remaining eight years. A total of thirteen containment areas use the scraper method of manure removal. Waste flows from all thirteen containment areas to four open lagoons in succession, which make up the site's AWMS. Effluent is disposed of through surface spread. The biodigester will consist of one cell (15m x 46m x 5m). Construction is expected to be complete in May 2007.

Ailor Carlos Anghinoni owns one farrow to finish operation in Mato Grosso:

- Fazenda São Francisco (850721) had approximately 6,794 animals on site between January 2005 and December 2005. Over ten years, the producer expects a 50% growth for the first two years and a 100% growth over the remaining eight years. A total of seven containment areas use the scraper or flush methods of manure removal. Waste flows from all seven containment areas to four open lagoons in succession, which make up the site's AWMS. Effluent is disposed of through surface spread. The biodigester will consist of one cell (16m x 50m x 5m). Construction is expected to be complete in October 2007.

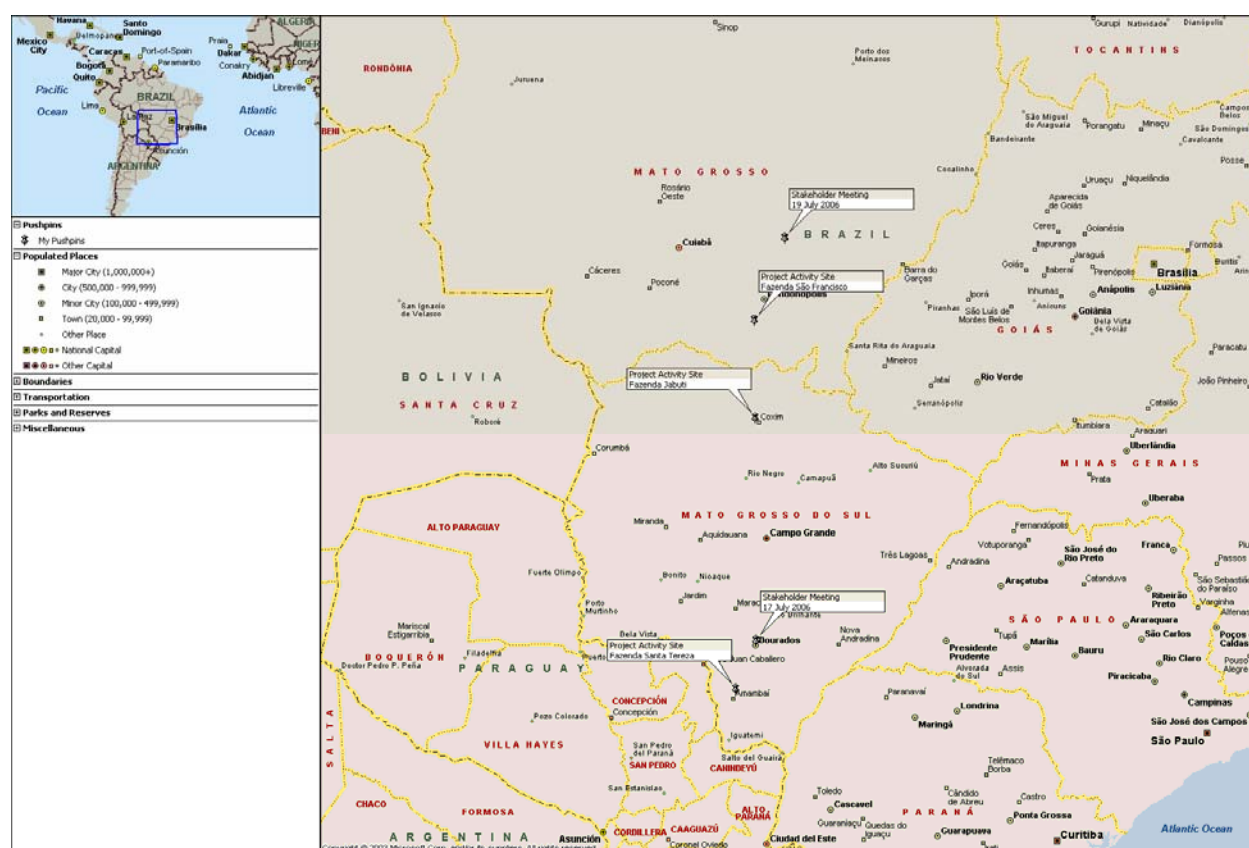


Figure A1 States Mato Grosso and Mato Grosso do Sul, Brazil project activity sites

CDM – Executive Board**Table A2. Detailed physical location and identification of project sites**

Farm/Site Name	AgCert ID	Address	Town / State	Contact	Phone	GPS Coord
Fazenda Jabuti	21212	Distrito de Silviolandia, Zona Rural	Coxim, Mato Grosso do Sul, 79.400-000	Ivo Vandrúsculo	55 67 3225-1107	18.524987S 54.810148W
Fazenda Santa Tereza	2008024	Rodovia Amambai - Ponta Porá Km 4	Amambai, Mato Grosso do Sul, 79.900 - 000	Bruno Okida	55 67 3426-1058	23.032093S 55.173202W
Fazenda São Francisco	850721	Rodovia BR 163, km. 63,5	Rondonópolis, Mato Grosso, 78.700-000	Ailor Carlos Anghinoni	55 66 3426-7545	16.900312S 54.810148W

CDM – Executive Board

A.4.2. Type and category(ies) and technology/measure of the small-scale project activity:

The project activity described in this document is classified as a Type III, Other Project Activities, Category III.D./Ver. 11, Methane recovery in agricultural and agro industrial activities.

The project activity will capture and combust methane gas produced from the decomposing manure of swine farms located in **Mato Grosso** and **Mato Grosso do Sul**, Brazil.

The technology to be employed by the project activity includes the installation of new covered lagoons creating an anaerobic digester. The system will be comprised of a lined and covered lagoon creating a digester with sufficient capacity and Hydraulic Retention Time (HRT) to greatly reduce the volatile solids loading in the effluent. The cover consists of a synthetic high density polyethylene (HDPE) geomembrane, which is secured to the liner by means of an anchor trench around the perimeter. HDPE is the most commonly used geomembrane in the world and is well suited for use in this project. HDPE is an excellent product for large applications that require UV, ozone, and chemical resistance. The digester has been designed to permit solids residue removal without breaking the gas retention seal. Processed effluent from the digester(s) will be routed to a secondary and tertiary lagoon system, as needed, and captured biogas will be routed to a highly efficient combustion system to destroy methane gas produced. Special maintenance procedures have been developed to ensure proper handling and disposition of the digester sludge.

The flaring combustion system is automated to ensure that all biogas that exits the digester and passes through the flare (and flow meter) is combusted. Pressure control devices within the gas handling system maintain proper biogas flow to the combustion system. A continuous ignition system ensures methane combustion whenever biogas is present at the flare. Two (2) sparking electrodes provide operational redundancy. If biogas is present in the flare, it is immediately ignited by the sparking system. If biogas is not present, the igniter sparks harmlessly approximately every 3 seconds. This continuous ignition system is powered by a robust solar module (solar-charged battery system) that operates independently from the power grid. With a fully charged battery, the module will provide power to the igniter for up to two weeks without sunlight. The component parts are verified functional on a periodic basis in accordance with manufacturer and other technical specifications.

Technology and know-how transfer:

The project developer is implementing a multi-faceted approach to ensure the project, including technology transfer, proceeds smoothly. This approach includes careful specification and design of a complete technology solution, identification and qualification of appropriate technology/services providers, supervision of the complete project installation, farm staff training, ongoing monitoring (by the project developer) and developing/implementing a complete Monitoring Plan using project developer staff. As part of this process, the project developer has specified a technology solution that will be self-sustaining (i.e., highly reliable, low maintenance, and operate with little or no user intervention). The materials and labour used in the base project activity are sourced from the host country whenever economically possible.

By working so closely with the project on a “day to day” basis, the project developer will ensure that all installed equipment is properly operated and maintained, and will carefully monitor the data collection and recording process. Moreover, by working with the farm staff over many years, the project developer will ensure that the staff acquires appropriate expertise and resources to operate the system on an ongoing/continuous basis.

CDM – Executive Board**A.4.3 Estimated amount of emission reductions over the chosen crediting period:****ESTIMATED AMOUNT OF EMISSION REDUCTIONS OVER THE 7 YEAR CREDITING PERIOD**

A.4.3.1 - Estimated Emission Reductions over chosen Crediting Period	
Years	Annual estimation of emission reductions in tonnes of CO₂e
Year 1	5,664
Year 2	6,946
Year 3	8,562
Year 4	9,939
Year 5	11,602
Year 6	13,619
Year 7	16,065
Total estimated reductions (tonnes CO₂e)	72,397
Total number of crediting years	7
Annual average over the crediting period of estimated reductions (tonnes of CO₂e)	10,342

A.4.4. Public funding of the small-scale project activity:

There is no official development assistance being provided for this project.

A.4.5. Confirmation that the small-scale project activity is not a debundled component of a large scale project activity:

Based on paragraph 2 of Appendix C of the Simplified Modalities and Procedures for Small-Scale CDM project activities,⁸ this project is not debundled. There are no other registered large-scale CDM project activities with the same project participants, in the same project category and technology/measure whose project boundary is within 1 km of another proposed small-scale activity.

SECTION B. Application of a baseline and monitoring methodology

⁸<http://cdm.unfccc.int/Projects/pac/howto/SmallScalePA/sscdebund.pdf>

CDM – Executive Board

B.1. Title and reference of the approved baseline and monitoring methodology applied to the small-scale project activity:

The project activity is a Type III, Other Project Activities, Category III.D./Ver. 11, Methane recovery in agricultural and agro industrial activities. The project is a small scale project because it comprises methane recovery from agro-industries, and project emissions are less than 60 kt CO₂eq.

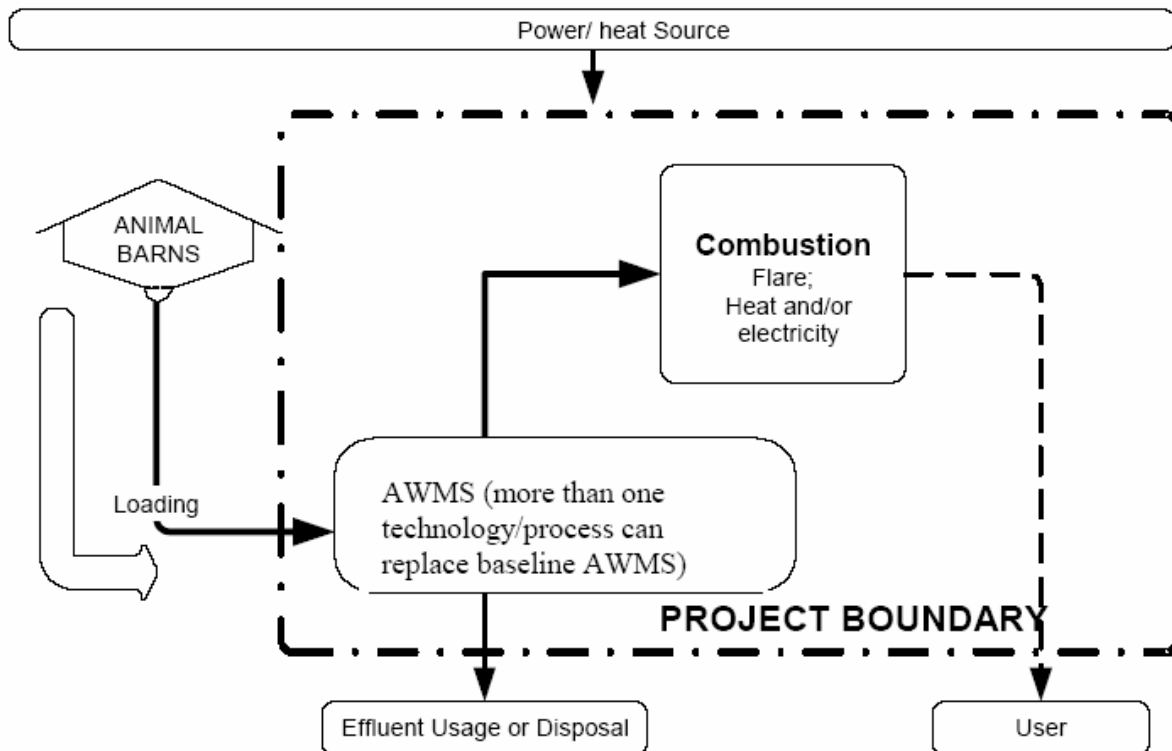
B.2 Justification of the choice of the project category:

The simplified methodologies are appropriate because the project activity site is considered an agro-industry and GHG emissions calculations can be estimated using internationally accepted IPCC guidance.

The project activity will capture and combust methane gas produced from the decomposing manure at swine cattle farms located in Mato Grosso and Mato Grosso do Sul, Brazil. This simplified baseline methodology is applicable to this project activity because without the proposed project activity, methane from the existing AWMS would continue to be emitted into the atmosphere. The proposed project activity will change the current animal waste management practice to that which uses an anaerobic digestion system equipped with a methane recovery and combustion system. Based on historical animal inventories and baseline estimates, the estimated emission reductions of the project activity will not exceed 60 kt CO₂e in any year of the crediting period as shown in Section A.4.3.

B.3. Description of the project boundary:

The project boundary is illustrated in Figure B1. It describes the basic layout of the project farm in a schematic format. The proposed project boundary considers the GHG emissions that come from AWMS practices, including the GHG resulting from the capture and combustion of biogas using the technology described in Section A.4.2.

CDM – Executive Board**Figure B1. Project Boundary**

The project activity site uses a system of one or more lagoons. Proposed AWMS practice changes include the construction of a digester comprised of cells that capture the resulting biogas which is then combusted. Based on the methodology, the anaerobic digester is the physical boundary of the methane recovery facility.

B.4. Description of baseline and its development:

The amount of methane that would be emitted to the atmosphere in the absence of the project activity can be estimated by referring to Volume 4, Chapter 10 of the 2006 IPCC Guidelines for National GHG Inventories.

CDM – Executive Board

The baseline for this project activity is defined as the amount of methane that would be emitted to the atmosphere during the crediting period in the absence of the project activity. In this case an open lagoon is considered the baseline and estimated emissions are determined as follows:

Step 1 – Livestock Population

Animal populations for the project activity sites are described in Annex 3. The AWMS used on the farms is an open lagoon, unless otherwise noted in Section A.4.1.4.

Step 2 – Emission Factors

The emission factor for the animal group is:

$$EF_i = VS_i * n_m * B_{oi} * 0.67\text{kg/m}^3 * MCF_{jk} * MS\%_{ijk}$$

Equation B1⁹

Where:

EF_i	=	emission factor (kg) for animal type i (e.g., swine, weight adjusted),
VS_i	=	Volatile solids excreted in kg/day for animal type i, max Vs is 0.5 kg/head/day (adjusted as $Vs = (W_{\text{site}}/W_{\text{default}})^{10} * VS_{\text{IPCC}}$)
n_m	=	Number of days animals present,
B_{oi}	=	Maximum methane producing capacity (m^3/kg of VS) for manure produced by animal type i,
MCF_{jk}	=	Methane conversion factor for each manure management system j by climate region k; and
$MS\%_{ijk}$	=	fraction of animal type i's manure handled using manure system j in climate region k.

The amount of methane emitted can be calculated using:

$$CH_{4a} = EF_i * Population_{\text{year}}$$

Equation B2¹¹

Where:

CH_{4a}	=	methane produced in kg/yr for animal type i,
-----------	---	--

⁹ 2006 IPCC Guidelines for National Greenhouse Gas Inventories. Equation 10.23, p.10.41 and Annex 10A.2, Tables 10A-7 and 10A-8, p. 10.80 and 10.81

¹⁰ Obtained from 2006 IPCC, Annex 10A.2, Tables 10A-7 and 10A-8, p. 10.81 and 10.82

¹¹ Adapted from 2006 IPCC Guidelines for National Greenhouse Gas Inventories, Equation 10.23, p. 10.41.

CDM – Executive Board

EF_i = emission factor (kg) for animal type i (e.g., swine),
 $Population_{year}$ = yearly average population of animal type i.

Step 3 – Total Baseline Emissions

To estimate total yearly methane emissions the selected emission factors are multiplied by the associated animal population and summed.

$$BE = [CH_{4a} * GWP_{CH_4}]/1000$$

Equation B3¹²

Where:

BE = Baseline carbon dioxide equivalent emission in metric tons per year,
 CH_{4a} = annual methane produced in kg/yr for animal type i,
 GWP_{CH_4} = global warming potential of methane (21),

B.5. Description of how the anthropogenic emissions of GHG by sources are reduced below those that would have occurred in the absence of the registered small-scale CDM project activity:

Anthropogenic GHGs, specifically methane, are released into the atmosphere via decomposition of animal manure. Currently, this farm-produced biogas is not collected or destroyed.

The proposed project activity intends to improve current AWMS practices. These changes will result in the mitigation of anthropogenic GHG emissions, specifically the recovery of methane, by controlling the lagoon's decomposition processes and collecting and combusting the biogas.

There are no existing, pending, or planned national, state, or local regulatory requirements that govern GHG emissions from agro-industry operations (specifically, pork production activities) as outlined in this PDD. The project participants have solicited information regarding this issue during numerous conversations with local and state government officials and through legal representation and have determined there is no regulatory impetus for producers to upgrade current AWMS beyond existing open air lagoon. The following paragraphs discuss the Brazilian pork industry and how conditions hinder changes in AWMS practices.

Assessment of barriers:

Absent CDM project activities, the proposed project activity has not been adopted on a national or worldwide scale due to the following barriers:

- a. **Investment Barriers:** This treatment approach is considered one of the most advanced AWMS systems in the world. Only a few countries have implemented such technology because of the high investment costs compared to other available systems and due to regionalized subsidies for electric generation. The Brazilian energy market does not currently offer incentives to sell biogas into the grid. The investment required to produce energy by utilizing biogas is still too high compared to

¹² Adapted from Equation 9, page 12, AM0016/version 02, 22 October 2004 / UNFCCC / CDM Meth Panel

CDM – Executive Board

electricity prices in Brazil. Additionally, much of the power distributed in Brazil is derived from hydroelectric sources.

EMBRAPA noted that in general, producers view the AWMS as a stage that is outside of the production process and have difficulty financing changes that should be undertaken. Even banks have been unwilling to finance such activities absent government guarantees or other incentives. Professor Dr. Carlos Cláudio Perdomo, a swine and poultry researcher from EMBRAPA, states: *“Many producers don’t possess the capacity of investment for a new AWMS. Even the big large producing farms that require more sophisticated systems also lack this capacity of investment.”*¹³

- b. *Technology barriers:* Anaerobic digester systems have to be sized to handle projected animal/effluent volumes with a Hydraulic Retention Time (HRT) consistent with extracting most/all CH₄ from the manure. These systems become progressively more expensive on a ‘per animal’ basis as farm animal population (i.e., farm size) is decreased. Moreover, operations and maintenance requirements involved with this technology, including a detailed monitoring program to maintain system performance levels, must also be considered. Worldwide, few anaerobic digesters have achieved long-term operations, due primarily to inappropriate operations and maintenance.

The proposed AWMS represents the most advanced AWMS technology in the state. The proposed project activity AWMS mitigates GHG emissions with associated environmental co-benefits.

Per local and state officials as well as the project developer’s legal consul, there were no existing laws or regulations, nor were any anticipated, that would require these farms to change their open lagoon AWMS practice in order to mitigate GHG emissions. An analysis was performed to assess whether the basis in choosing the baseline scenario is expected to change during the crediting period and the results follow:

- a) *Legal constraints:* There is no expectation that Brazilian legislation will require future use of digesters due to the significant investments required. Further, there is no expectation that Brazil will pass any legislation which deals with the GHG emissions (see Step 4c above).
- b) *Common practice:* While past practices cannot predict future events, it is worth noting most farms (see Table A2) have been in existence for many years, during which time most have only used open lagoons as their AWMS practice. Local agricultural officials/inspectors confirmed (at the stakeholders’ meeting) that open lagoons have always been used at these farms.

These anaerobic lagoon systems are economically feasible, reliable, effective, and satisfy regulatory and social requirements, and there is no reason to expect that these conditions will change in the foreseeable future.

B.6. Emission reductions:

B.6.1. Explanation of methodological choices:

Baseline Emissions

Baseline emissions are calculated as described in section B.4.

Project Emissions

¹³ http://www.jornalexpress.com.br/noticiais/detalhes.php?id_jornal=2&id_noticia=5802

CDM – Executive Board

The amount of methane that would be emitted to the atmosphere due to the project activity and within the project boundaries can be estimated by referring to Volume 4, Chapter 10 of the 2006 IPCC Guidelines for National GHG Inventories.

The project emissions for this project activity are defined as the amount of methane that would be emitted to the atmosphere during the crediting period due to the project activity. In this case an anaerobic digester is considered the project activity and estimated emissions are determined as follows:

Step 1 – Livestock Population

Livestock populations for the project activity sites are described in Annex 3. The AWMS proposed for use on the farm is an anaerobic digester.

Step 2 – Emission Factors

The emission factor for the animal group is:

$$EF_i = VS_i * n_m * B_{oi} * 0.67 \text{ kg/m}^3 * MCF_{jk} * MS\%_{ijk}$$

Equation B4¹⁴

Where:

EF_i	=	emission factor (kg) for animal type i (e.g., swine, weight adjusted),
VS_i	=	Volatile solids excreted in kg/day for animal type i, max Vs is 0.5 kg/head/day (adjusted as $VS = (W_{\text{site}}/W_{\text{default}})^{15} * VS_{\text{IPCC}}$)
n_m	=	Number of days animals present,
B_{oi}	=	Maximum methane producing capacity (m^3/kg of VS) for manure produced by animal type i,
MCF_{jk}	=	Methane conversion factor for each manure management system j by climate region k; and
$MS\%_{ijk}$	=	fraction of animal type i's manure handled using manure system j in climate region k.

The amount of methane emitted can be calculated using:

$$CH_{4a} = EF_i * Population_{\text{year}}$$

Equation B5¹⁶

Where:

CH_{4a}	=	methane produced in kg/yr for animal type i,
-----------	---	--

¹⁴ 2006 IPCC Guidelines for National Greenhouse Gas Inventories. Page 10.41, Equation 10.23 and Page 10.77, Table 10A-4.

¹⁵ Obtained from 2006 IPCC Guidelines for National Greenhouse Gas Inventories, Annex 10A.2, Table 10A-7 and Table 10A-8, p. 10.80 and 10.81

¹⁶ Adapted from 2006 IPCC Guidelines for National Greenhouse Gas Inventories, p. 10.41.

CDM – Executive Board

EF_i = emission factor (kg) for animal type i (e.g., swine),
 $Population_{year}$ = yearly average population of animal type i.

To estimate total yearly methane emissions the selected emission factors are multiplied by the associated animal population and summed.

$$PE = [CH_{4a} + FE] * GWP_{CH_4} / 1000$$

Equation B6¹⁷

Where:

PE = Project activity carbon dioxide equivalent emission in metric tons per year,
 CH_{4a} = annual methane produced in kg/yr for animal type i,
 FE = annual methane emitted from flare due to inefficiency
 GWP_{CH_4} = global warming potential of methane (21)

Leakage

In accordance with the baseline methodology, leakage calculations are not required.

Emission Reductions

The ex-ante baseline emissions calculated as described in section B.4 of this PDD will be compared to the actual monitored amount of methane captured and combusted by the project activity. The lesser of these values will be used as the project emission reductions of the crediting period.

$$ER_{net} = BE - (PE + DE)$$

Equation B7

Where:

BE = Baseline carbon dioxide equivalent emission in metric tons per year,
 PE = Project activity carbon dioxide equivalent emission in metric tons per year,
 DE = Direct emissions from use of fossil fuels or electricity for operation of facility

According to the methodology, direct emissions from the use of fossil fuels and/or electricity for the operation of the facility must be considered as part of the project emissions. For swine farms in Brazil, the standard equipment configuration consists of one 2 horsepower (HP) biogas blower that operates 24 hours per day per anaerobic digester.

$$HP \text{ to kWh conversion} = HP (2) \times \text{hours per day (24)} \times \text{days a year (365)} \times 0.7457^{18}$$

¹⁷ Adapted from Equation 9, page 12, AM0016/version 02, 22 October 2004/UNFCCC/CDM Methodology Panel

¹⁸ .7457 is the standard scientific conversion factor from horsepower (HP) to Kilowatt Hours (kWh) based on Ohm's Law

CDM – Executive Board

As such, the electrical consumption per year per anaerobic digester for a swine farm in Brazil is approximately 13,065 kWh/yr. To convert this number into metric tonnes of CO₂e per year, the following formula is applied:

$$kWh \text{ to } CO_2e \text{ conversion} = (kWh (13,065) \times \text{country specific emission factor } (0.2677)^{19}) / 1000$$

Therefore, for each anaerobic digester, approximately 3.5 metric tonnes of CO₂e are produced per year as a result of the project activity.

Because the digester is a sealed system, all methane is captured and flared, leaving none to be released to the atmosphere via physical leakage. In addition, the methane conversion factor of the emission reduction calculations includes a conservative 10% discount to compensate for intrinsic digester emissions.

B.6.2. Data and parameters that are available at validation:

Accurate data collection is essential. The farms included in this project activity use a standardized industry database package which captures a wide range of incremental production data to manage operation and enable the farm to maximize both productivity and profitability. AgCert uses some data collected from this system (referred to as “Data collected on the AgCert Form B” in Table B.1.). AgCert has a rigorous QA/QC system that ensures data security and data integrity. Spot audits of data collection activities are conducted on a regular basis.

AgCert has a data management system capable of interfacing with producer systems to serve as a secure data repository. Project activity data related uncertainties will be reduced by applying sound data collection quality assurance and quality control procedures. Table B.1. details data and parameters available at the time of validation.

Table B.1. Data / Parameter Values and References

Data / Parameter:	GWP CH₄
Data unit:	
Description:	Global Warming Potential of Methane
Source of data used:	Intergovernmental Panel on Climate Change, <i>Climate Change 1995: The Science of Climate Change</i> (Cambridge, UK: Cambridge University Press, 1996)
Value applied:	21
Justification of the choice of data or description of measurement methods and procedures actually applied:	
Comments:	

Data / Parameter:	Population_{year}
Data unit:	Number of animals
Description:	Annual average population of animal type
Source of data used:	Data collected on the AgCert Form B (Baseline data collection).

¹⁹ .2677kg CO₂ / kWh, Obtained from and calculated ex-ante from AM0015 and registered CDM project 0190 titled: Moema Bagasse Cogeneration Project (MBCP).

CDM – Executive Board

Value applied:	See Annex 3 Animal Inventory
Justification of the choice of data or description of measurement methods and procedures actually applied:	Animal population used to estimate baseline and project emission estimates was based on a 12 month period of actual or projected operation production data.
Comments:	

Data / Parameter:	n_m
Data unit:	Number of days
Description:	Days animals resident in system per year
Source of data used:	Data collected on the AgCert Form B (Baseline data collection).
Value applied:	See Table B2 for Baseline Activity See Table B3 for Project Activity
Justification of the choice of data or description of measurement methods and procedures actually applied:	
Comments:	

Data / Parameter:	$MS\%_{ijk}$
Data unit:	Fraction or percentage
Description:	Percent of animal effluent used in system.
Source of data used:	Data collected on the AgCert Form B (Baseline data collection).
Value applied:	100%
Justification of the choice of data or description of measurement methods and procedures actually applied:	
Comments:	

Data / Parameter:	VS_i
Data unit:	Kg/day
Description:	Volatile solids excreted for animal type (market swine)
Source of data used:	Obtained from 2006 IPCC, Annex 10A.2, Table 10A-7, p. 10.80 (market swine) Obtained from 2006 IPCC, Annex 10A.2, Table 10A-8, p. 10.81 (breeding swine)
Value applied:	0.27 (market swine) 0.50 (breeding swine)
Justification of the choice of data or description of measurement methods and procedures actually applied:	
Comments:	

Data / Parameter:	B_{oi}
Data unit:	m^3/kg of VS
Description:	Maximum methane producing capacity for manure produced by animal

CDM – Executive Board

	type
Source of data used:	Obtained from 2006 IPCC, Annex 10A.2, Tables 10A-7 and 10A-8, p. 10.80 and 10.81
Value applied:	0.48
Justification of the choice of data or description of measurement methods and procedures actually applied:	
Comments:	

Data / Parameter:	MCF_{jk}
Data unit:	
Description:	Methane conversion factor for each manure management system
Source of data used:	Obtained from 2006 IPCC, Table 10.17, p. 10.45 for Baseline Activity Obtained from 2006 IPCC, Table 10.17, p. 10.46 for Project Activity
Value applied:	Refer to 2006 IPCC, Table 10.17, p. 10.45 for Baseline Activity Refer to 2006 IPCC, Table 10.17, p. 10.46 for Project Activity
Justification of the choice of data or description of measurement methods and procedures actually applied:	
Comments:	

Data / Parameter:	Days OB
Data unit:	
Description:	Days out of barn
Source of data used:	Data collected on the AgCert Form B (Baseline data collection).
Value applied:	See Table B2 for Baseline Activity See Table B3 for Project Activity
Justification of the choice of data or description of measurement methods and procedures actually applied:	
Comments:	

Data / Parameter:	BW kg
Data unit:	Kg
Description:	Body weight of animals in kilograms.
Source of data used:	Obtained from 2006 IPCC, Annex 10A.2, Table 10A.7 and Table 10A-8, p. 10.80 and 10.81
Value applied:	See Table B2 for Baseline Activity See Table B3 for Project Activity
Justification of the choice of data or description of measurement methods and procedures actually applied:	
Comments:	

CDM – Executive Board

B.6.3 Ex-ante calculation of emission reductions:

Emission factors for the baseline are calculated as described in Section B.3. To estimate total yearly baseline methane emissions, the selected emission factors are multiplied by the associated animal population and summed.

Table B.2. Baseline Emissions (Methane shown in metric tonnes of CO₂e)

Fazenda São Francisco 850721							Year 1	
	Population _{year}	N _m	Days OB	Default BW	Ave Bw, kg	EF _i	CH ₄ annual	
Sows:	594	365	0	198	215	50.98	30,285.07	
Gilts:	51	365	0	198	112	26.56	1,354.54	
Boars:	7	365	0	198	234	55.49	388.43	
Finishers:	4,170	365	0	46	68	37.48	156,296.69	
Nur/Wean:	1,972	365	0	46	15	8.27	16,304.33	
Total Annual CH ₄ :							204,629.07	
BE (CO ₂ e/year):							4,297.21	

Fazenda São Francisco 850721								
Year	1	2	3	4	5	6	7	Total
Expected Growth %	0%	25%	25%	22%	22%	22%	22%	
Baseline Emissions (CO ₂ e/year)	1,432.4	5,371.5	6,714.4	8,185.9	9,979.9	12,167.0	14,833.5	58,684.7

Note: Year 1 for Fazenda São Francisco (850721) has been adjusted to account for the construction completion date of October 2007.

Fazenda Santa Tereza - 2008024							Year 1	
	Population _{year}	N _m	Days OB	Default BW	Ave Bw, kg	EF _i	CH ₄ annual	
Sows:	1,186	365	0	198	215	49.71	58,956.47	
Gilts:	106	365	0	198	112	25.90	2,744.94	
Boars:	9	365	0	198	234	54.10	486.93	
Finishers:	0	365	0	46	68	36.54	0.00	
Nur/Wean:	3,134	365	0	46	15	8.06	25,263.86	
Total Annual CH ₄ :							87,452.19	
BE (CO ₂ e/year):							1,836.50	

Fazenda Santa Tereza - 2008024								
Year	1	2	3	4	5	6	7	Total
Expected Growth %	0%	10%	10%	1%	1%	1%	1%	
Baseline Emissions (CO ₂ e/year)	1,836.5	2,020.1	2,222.2	2,236.0	2,250.0	2,264.1	2,278.2	15,107.2

CDM – Executive Board

Fazenda Jabuti 21212						Year 1		
	Population _{year}	N _m	Days OB	Default BW	Ave Bw, kg	EF _i	CH ₄ annual	
Sows:	331	365	0	198	215	50.35	16,665.07	
Gilts:	15	365	0	198	112	26.23	393.41	
Boars:	19	365	0	198	234	54.80	1,041.14	
Finishers:	0	365	0	46	68	37.01	0.00	
Nur/Wean:	649	365	0	46	15	8.16	5,298.80	
Total Annual CH ₄ :						23,398.44		
BE (CO ₂ e/year):						491.37		
Fazenda Jabuti 21212								
Year	1	2	3	4	5	6	7	Total
Expected Growth %	0%	48%	47%	11%	11%	11%	12%	
Baseline Emissions (CO2e/year)	491.4	729.3	1,070.4	1,191.1	1,323.4	1,474.7	1,646.7	7,926.9

Emission factors for the project activity are calculated as described in Section B.6.1. To estimate total yearly project methane emissions, the selected emission factors are multiplied by the associated animal population and summed.

CDM – Executive Board

Table B.3 Project Activity Emissions (Methane shown in metric tonnes of CO₂e)

Fazenda São Francisco 850721							Year 1	
	Population _{year}	N _m	Days OB	Default BW	Ave Bw, kg	EF _i	CH ₄ annual	
Sows:	594	365	0	198	215	6.37	3,785.63	
Gilts:	51	365	0	198	112	3.32	169.32	
Boars:	7	365	0	198	234	6.94	48.55	
Finishers:	4,170	365	0	46	68	4.69	19,537.09	
Nur/Wean:	1,972	365	0	46	15	1.03	2,038.04	
Digester CH ₄ :							25,578.63	
Direct Emissions (Flare) CH ₄ :							3,581.01	
Total Annual CH ₄ :							29,159.64	
PE (CO ₂ e/year):							612.35	

Fazenda São Francisco 850721								
Year	1	2	3	4	5	6	7	Total
Expected Growth %	0%	25%	25%	22%	22%	22%	22%	
Project Emissions (CO ₂ e/year)	204.1	765.4	956.8	1,166.5	1,422.1	1,733.8	2,113.8	8,362.6

Note: Year 1 for Fazenda São Francisco (850721) has been adjusted to account for the construction completion date of October 2007.

Fazenda Santa Tereza - 2008024							Year 1	
	Population _{year}	N _m	Days OB	Default BW	Ave Bw, kg	EF _i	CH ₄ annual	
Sows:	1,186	365	0	198	215	6.37	7,558.52	
Gilts:	106	365	0	198	112	3.32	351.91	
Boars:	9	365	0	198	234	6.94	62.43	
Finishers:	0	365	0	46	68	4.69	0.00	
Nur/Wean:	3,134	365	0	46	15	1.03	3,238.96	
Digester CH ₄ :							11,211.82	
Direct Emissions (Flare) CH ₄ :							1,524.81	
Total Annual CH ₄ :							12,736.63	
PE (CO ₂ e/year):							267.47	

Fazenda Santa Tereza - 2008024								
Year	1	2	3	4	5	6	7	Total
Expected Growth %	0%	10%	10%	1%	1%	1%	1%	
Project Emissions (CO ₂ e/year)	267.5	294.2	323.6	325.7	327.7	329.7	331.8	2,200.2

CDM – Executive Board

Fazenda Jabuti 21212							Year 1	
	Population _{year}	N _m	Days OB	Default BW	Ave Bw, kg	EF _i	CH ₄ annual	
Sows:	331	365	0	198	215	6.37	2,109.50	
Gilts:	15	365	0	198	112	3.32	49.80	
Boars:	19	365	0	198	234	6.94	131.79	
Finishers:	0	365	0	46	68	4.69	0.00	
Nur/Wean:	649	365	0	46	15	1.03	670.73	
Digester CH ₄ :							2,961.83	
Direct Emissions (Flare) CH ₄ :							408.73	
Total Annual CH ₄ :							3,370.56	
PE (CO ₂ e/year):							70.78	

Fazenda Jabuti 21212								
Year	1	2	3	4	5	6	7	Total
Expected Growth %	0%	48%	47%	11%	11%	11%	12%	
Project Emissions (CO₂e/year)	70.8	105.1	154.2	171.6	190.6	212.4	237.2	1,141.9

Using Equation B7 from Section B.6.1, the ex-ante baseline emissions calculated as shown in Table B.2 of this PDD will be compared to the actual monitored amount of methane captured and combusted by the project activity shown in Table B.3. The lesser of these values will be used as the project emission reductions of the crediting period.

Using the standard equipment configuration of one 2 horsepower (HP) biogas blower that operates 24 hours per day per anaerobic digester, direct emissions from the use of fossil fuels and/or electricity for the operation of the facility are considered as part of the project emissions.

For this particular project with three project activity sites and a corresponding three anaerobic digesters, the direct emission totals are as follows:

Table B.4. Direct Emissions

Source	Est kWh consumed / produced per year	Kg CO ₂ e emitted per kWh produced	Metric Tonnes CO ₂ e per year
Direct emissions from use of electricity or fossil fuel	39,194	0.2677	10.49

Because the digester is a sealed system, all methane is captured and flared, leaving none to be released to the atmosphere via physical leakage. In addition, the methane conversion factor of the emission reduction calculations includes a conservative 10% discount to compensate for intrinsic digester emissions.

B.6.4 Summary of the ex-ante estimation of emission reductions:

CDM – Executive Board**Table B.5. Total Emission Reductions**

Table E4. Total Emission Reductions							
<i>Year</i>	<i>1</i>	<i>2</i>	<i>3</i>	<i>4</i>	<i>5</i>	<i>6</i>	<i>7</i>
Total Baseline Emissions (BE)	6,625	8,121	10,007	11,613	13,553	15,906	18,758
Total Project Emissions (PE)	951	1,165	1,435	1,664	1,940	2,276	2,683
Direct emissions from electricity/fossil fuel (DE)	10	10	10	10	10	10	10
Total Emission Reductions ($ER_{net} = BE - (PE + DE)$)	5,664	6,946	8,562	9,939	11,602	13,619	16,065

B.7 Application of a monitoring methodology and description of the monitoring plan:**B.7.1 Data and parameters monitored:**

AgCert has designed and implemented a unique set of data management tools to efficiently capture and report data throughout the project lifecycle. On-site assessment (collecting Geo-referenced, time/date stamped data), supplier production data exchange, task tracking, and post-implementation auditing tools have been developed to ensure accurate, consistent, and complete data gathering and project implementation. Sophisticated tools have also been created to estimate/monitor the creation of high quality, permanent, ERs using IPCC formulae.

By coupling these capabilities with an ISO-based quality and environmental management system, AgCert enables transparent data collection and verification.

Metering devices used are designed to continuously and accurately measure biogas flow and are specially designed for corrosive environments. Meters are received from the factory fully-calibrated and retain calibration for the service life of the unit. Volumetric accuracy of the meter is permanent and non-adjustable. Accuracy is not affected by low or varying line pressures. Accuracy of the flowmeters utilized exceeds 99 percent across the entire measured rate curve with an uncertainty range of less than ± 1 percent. Periodic maintenance will be performed based on manufacturer specifications. Other equipment calibrations are accomplished using procedures developed by the project developer (Annex 4).

Methane concentration is determined using a Bacharach Model Fyrite (or equivalent) gas analyzer. The process is described in the Monitoring Plan. The measuring equipment is calibrated in accordance with the manufacturer specifications. The equipment is accurate to within 0.5%.

An industry standard gas analyser (Landtec GEM-500 or equivalent) will be used when measuring methane content of the biogas to determine the efficiency of the flaring process. The unit will be calibrated to an accuracy of ± 1 percent.

See Table B.6 for specific parameters to be monitored.

Table B.6. Data to be monitored

Parameter:	SIR
Unit:	Numeric frequency

CDM – Executive Board

Description:	Sludge removal count
Source of data:	Data collected on the AgCert Monthly Monitoring Form, if required.
Value of data:	
Brief description of measurement methods and procedures to be applied:	Measured as required. Sludge removal will be accomplished to ensure proper disposition so there is no resulting methane emissions.
QA/QC procedures to be applied (if any):	AgCert employs an internal QA audit process that ensures monitoring activities are conducted in accordance with the monitoring plan and verifies the accuracy of data reported.
Any comment:	Data will be archived electronically and kept for the duration of the project + 2 years.

Parameter:	BGP
Unit:	Volume of m ³
Description:	Biogas produced (cumulative)
Source of data:	Data collected on the AgCert Monthly Monitoring Form.
Value of data:	
Brief description of measurement methods and procedures to be applied:	Measured and recorded monthly. A biogas meter will continuously measure the amount of biogas produced.
QA/QC procedures to be applied (if any):	AgCert employs an internal QA audit process that ensures monitoring activities are conducted in accordance with the monitoring plan and verifies the accuracy of data reported.
Any comment:	Data will be archived electronically and kept for the duration of the project + 2 years.

Parameter:	MC
Unit:	Percentage
Description:	Methane content of biogas
Source of data:	Data collected on the AgCert Monthly Monitoring Form.
Value of data:	
Brief description of measurement methods and procedures to be applied:	Measured and recorded quarterly.
QA/QC procedures to be applied (if any):	AgCert employs an internal QA audit process that ensures monitoring activities are conducted in accordance with the monitoring plan and verifies the accuracy of data reported.
Any comment:	Data will be archived electronically and kept for the duration of the project + 2 years. If significant deviations are observed, more frequent measurements will be taken until the values stabilize.

Parameter:	CEE
Unit:	Percentage (fraction of time)
Description:	Combustion equipment efficiency (fraction of time in which gas is combusted)

CDM – Executive Board

Source of data:	Data collected on the AgCert Equipment Maintenance Log.
Value of data:	
Brief description of measurement methods and procedures to be applied:	Measured and recorded quarterly. The fraction of time will be determined as 100% less any time the flare is out of service and gas is flowing. Flare maintenance records will be used to make this determination.
QA/QC procedures to be applied (if any):	AgCert employs an internal QA audit process that ensures monitoring activities are conducted in accordance with the monitoring plan and verifies the accuracy of data reported.
Any comment:	Data will be archived electronically and kept for the duration of the project + 2 years.

Parameter:	EFP
Unit:	Percentage
Description:	Efficiency of flaring process
Source of data:	Data collected on the AgCert Equipment Maintenance Log.
Value of data:	
Brief description of measurement methods and procedures to be applied:	Measured and recorded upon initial installation. Maintenance will be performed annually after installation to ensure optimal operation.
QA/QC procedures to be applied (if any):	AgCert employs an internal QA audit process that ensures monitoring activities are conducted in accordance with the monitoring plan and verifies the accuracy of data reported.
Any comment:	Data will be archived electronically or on paper and kept for the duration of the project + 2 years.

B.7.2 Description of the monitoring plan:

A complete set of procedures and a Monitoring Plan (see Annex 4) has been developed to ensure accurate measurement of biogas produced and proper operation of the digester equipment. This plan exceeds the requirements outlined in the approved methodology outlined in Appendix B of the simplified modalities and procedures for small-scale CDM project activities as it applies to proposed project activity.

Further, AgCert has a trained staff located in the host nation to perform O&M activities including but not limited to monitoring and collection of parameters, quality audits, personnel training, and equipment inspections. The associated Monitoring Plan has been developed to provide guidance (work instructions) to individuals that collect and/or process data. AgCert staff will perform audits of farm operations personnel on a regular basis to ensure proper data collection and handling.

B.8 Date of completion of the application of the baseline and monitoring methodology and the name of the responsible person(s)/entity(ies)

The final draft of the application of the methodology was completed on 14/11/2007.

The entity determining the baseline and monitoring methodology is AgCert International plc who is the project developer as well as a project participant. Contact information is listed in Annex 1.

CDM – Executive Board**SECTION C. Duration of the project activity / crediting period****C.1 Duration of the project activity:****C.1.1. Starting date of the project activity:**

The starting date for this activity is 07/03/2005.

C.1.2. Expected operational lifetime of the project activity:

The expected life of this project is 24y 7m.

C.2 Choice of the crediting period and related information:

The project activity will use a **renewable** crediting period

C.2.1. Renewable crediting period**C.2.1.1. Starting date of the first crediting period:****C.2.1.2. Length of the first crediting period:****C.2.2. Fixed crediting period:****C.2.2.1. Starting date:**

The starting date of the crediting period is 01/10/2007.

C.2.2.2. Length:

The length of the crediting period is 7y-0m.

SECTION D. Environmental impacts**D.1. If required by the host Party, documentation on the analysis of the environmental impacts of the project activity:**

An environmental impact analysis is not required for this type of GHG project activity.

Environment:

There are no negative environmental impacts resulting from the proposed project activity.

Beyond the principal benefit of mitigating GHG emissions (the primary focus of the proposed project); the proposed activities will also result in positive environmental co-benefits. They include:

- Reducing atmospheric emissions of Volatile Organics Compounds (VOCs) that cause odour,

CDM – Executive Board

- Lowering the population of flies and associated enhancement to on-farm bio-security thus reducing the possible spread of disease.

The combination of these factors will make the proposed project site more “neighbour friendly” and environmentally responsible.

D.2. If environmental impacts are considered significant by the project participants or the host Party, please provide conclusions and all references to support documentation of an environmental impact assessment undertaken in accordance with the procedures as required by the host Party:

No action required.

SECTION E. Stakeholders’ comments

E.1. Brief description how comments by local stakeholders have been invited and compiled:

Stakeholders meetings for this project activity were held in São Gabriel do Oeste, Mato Grosso do Sul on January 26, 2005; Dourados, Mato Grosso do Sul on July 17, 2006; and Primavera do Leste, Mato Grosso on July 19, 2006.

AgCert invited stakeholders to the meetings to explain the UNFCCC CDM process and proposed project activity, presided over by Michael Mirda and Paulo Furtado in São Gabriel do Oeste and Oldemar Eichelt in Dourados and Primavera do Leste. Invitations were sent via electronic mail and postal directly to project participants, federal, state and local officials prior to the meetings. Figure A1 shows the Stakeholder meeting sites.

The CDM Project Stakeholders Meeting information was published in the municipal newspaper in the region of the CDM project activity:

- Folha de São Gabriel*, São Gabriel do Oeste, January 15, 2005
- Diário do Campo*, Mato Grosso do Sul, July 13, 2006
- O Diário*, Primavera do Leste, July 13, 2006
- Folha do Estado*, Cuiabá, July 13, 2006

A slide presentation was given, in Portuguese, and attendees were afforded the opportunity to ask questions and provide comments. The presentation which covered the following topics: purpose of meeting, background on global warming and the Kyoto Protocol, UNFCCC CDM process, process and responsibilities of the project, participants, equipment to be used for evaluation and audits, information management system, an example of project, benefits from the project (environmental and economic), and where to get further information. On other occasions, representatives from AgCert also met with and explained project details to local and state government officials.

Minutes for these meetings have been compiled and include questions and answers for each of the meetings.

E.2. Summary of the comments received:

CDM – Executive Board

No negative issues were raised by local stakeholders. Comments voiced by individuals were positive and supporting of the project activity.

A complete listing of the comments and the individuals who made them is on file. The above comments were translated into English by AgCert.

E.3. Report on how due account was taken of any comments received:

Overall, there was good feedback from all participants about the project activity. The group pledged their support and offered to assist if needed in the facilitation and completion of the project. Several stakeholders voiced their appreciation for having the opportunity to participate in these project activities.

CDM – Executive Board**Annex 1****CONTACT INFORMATION ON PARTICIPANTS IN THE PROJECT ACTIVITY**

Project Participant and Developer:	
Organization:	Agcert do Brasil Soluções Ambientais Ltda.
Street/P.O. Box:	Rua James Joule, 92, 14th andar
Building:	
City:	Cidade Monções
State/Region:	São Paulo
Postfix/ZIP:	04576-080
Country:	Brasil
Telephone:	+55 11 2127.0450
FAX:	+55 11 2127.0550
E-Mail:	CDMTeam@agcert.com
URL:	www.Agcert.com
Represented by:	David Lawrence
Title:	Project Coordinator
Salutation:	
Last Name:	Lawrence
Middle Name:	
First Name:	David
Department:	
Mobile:	+55 11 8412 3206
Direct FAX:	
Direct tel:	
Personal E-Mail:	dlawrence@agcert.com

CDM – Executive Board

Project Developer and Participant:	
Organization:	AgCert International plc
Street/P.O. Box:	Blackthorn Road Sandyford
Building:	Apex Building
City:	Dublin 18
State/Region:	
Postfix/ZIP:	18
Country:	Ireland
Telephone:	
FAX:	
E-Mail:	CDMTeam@agcert.com
URL:	www.Agcert.com
Represented by:	
Title:	Vice President, Regulatory Affairs
Salutation:	Mr.
Last Name:	Perkowski
Middle Name:	S.
First Name:	Leo
Department:	Regulatory
Mobile:	+1 (321) 432.3081
Direct FAX:	+353 (0) 1 245-7450
Direct tel:	+353 (0) 1 245-7400
Personal E-Mail:	CDMTeam@agcert.com

CDM – Executive Board

Annex 2

INFORMATION REGARDING PUBLIC FUNDING

There is no official development assistance being provided for this project.

CDM – Executive Board

Annex 3

BASELINE INFORMATION

CDM – Executive Board

	Month/Yr	Animal Type				
		Sow	Gilt	Boar	Fin	Nurs
Fazenda Jabuti (21212)	Sep-04	357	0	18	0	606
	Oct-04	349	0	18	0	645
	Nov-04	339	0	18	0	665
	Dec-04	330	0	18	0	700
	Jan-05	328	24	20	0	967
	Feb-05	328	22	20	0	960
	Mar-05	330	0	20	0	729
	Apr-05	330	42	20	0	576
	May-05	372	82	20	0	520
	Jun-05	454	0	20	0	747
	Jul-05	455	10	20	0	678
	Aug-05	0	0	20	0	0
Fazenda Santa Tereza (2008024)						
	Apr-05	1,185	74	12	0	3,384
	May-05	1,194	59	12	0	3,129
	Jun-05	1,177	87	10	0	2,909
	Jul-05	1,162	81	10	0	3,303
	Aug-05	1,169	109	10	0	2,700
	Sep-05	1,187	104	9	0	2,776
	Oct-05	1,221	68	9	0	2,778
	Nov-05	1,217	123	8	0	2,962
	Dec-05	1,188	150	8	0	3,183
	Jan-06	1,201	130	8	0	3,238
	Feb-06	1,178	136	8	0	3,320
	Mar-06	1,151	150	7	0	3,918

CDM – Executive Board

	Month/Yr	Animal Type				
		Sow	Gilt	Boar	Fin	Nurs
Fazenda São Francisco (850721)	Jan-05	585	19	7	4,266	1,901
	Feb-05	582	46	7	4,190	1,801
	Mar-05	594	58	7	4,071	2,089
	Apr-05	616	24	7	4,248	1,860
	May-05	606	7	7	3,752	2,093
	Jun-05	601	26	7	4,777	1,980
	Jul-05	597	61	6	3,872	2,196
	Aug-05	595	69	6	3,979	1,989
	Sep-05	578	88	6	4,312	1,804
	Oct-05	594	57	6	3,956	2,024
	Nov-05	600	65	6	4,394	1,823
	Dec-05	583	90	6	4,226	2,107

CDM – Executive Board
Annex 4**MONITORING INFORMATION****Monitoring Plan****PURPOSE**

The purpose of this method specification is to describe the criteria for maintaining equipment, reporting equipment outages, and to provide detailed guidance for collection and processing of data that is used in the determination of Green House Gas (GHG) emissions.

SCOPE

This document applies to GHG Mitigation Project related activities. It applies to all personnel that operate and/or maintain project activity equipment and/or have an active role in data collection and processing.

ASSOCIATED DOCUMENTS

- UNFCCC approved monitoring methodology: AMS-III.D., Methane Recovery in agricultural and agro industrial activities.
http://cdm.unfccc.int/UserManagement/FileStorage/CDMWf_AM_8ZT96MNYC3LOIGNJNHTFN_RYFRIGTHR
- Jody Zall Kusek, and Ray C. Rist, June 2004. Ten Steps to a Results-based Monitoring and Evaluation System: A Handbook for Development Practitioners, World Bank.
http://www.worldbankinfoshop.org/ecommerce/catalog/product?item_id=3688663
- Component guides / manuals for:
 - Manure transfer system
 - Anaerobic digester
 - Biogas transfer system including a biogas flow-meter
 - Combustion system (Flare)
 - Optional combustion system
- MS004-F1, O & M Weekly Monitoring Checklist
- MS004-F2, O & M Monthly Monitoring Form
- MS004-F3, O & M Maintenance Log (en-br)
- MS004-F4, O & M Maintenance Log (sp-mx)
- MS008, Farm Data Collection Procedure
- MS008-F1, Animal Inventory Control
- MS008-F2, Monthly Inventory Reporting
- P004, Control of Nonconforming Product/Service
- P020, Monitoring & Measurement of Product/Processes

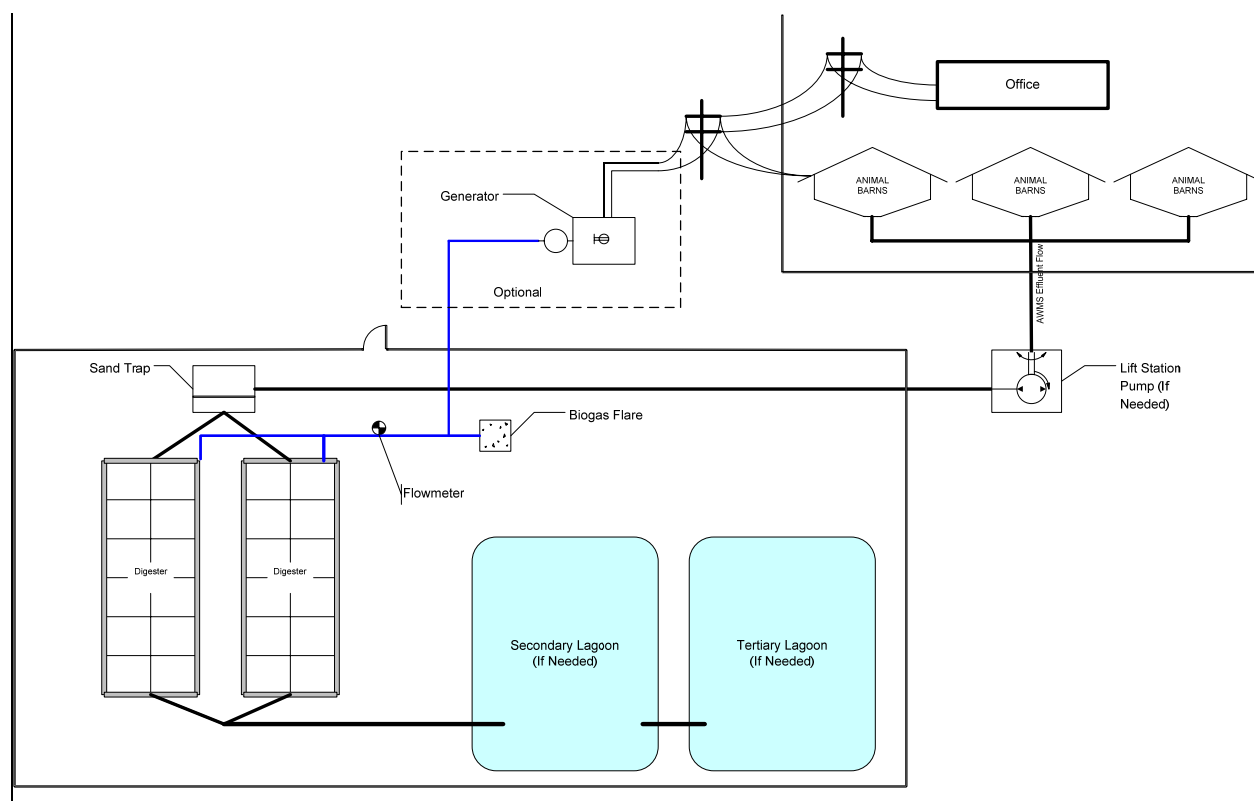
CDM – Executive Board

- P025, Control of Monitoring & Measurement Devices
- I025-1, Equipment Calibration & Verification
- P039, Competence, Training, and Awareness
- I031-2F11, Form B – Swine – IPCC (en)
- I031-2F13, Form B – IPCC – MX (sp)
- I031-2F16, Form B – Dairy – IPCC (en), (sp), (pt)
- I036-9, Bio-security and Safety
- Operations Manual Gas Analyzer
- EnviroCert Operations Management System (OMS)

OPERATION AND MAINTENANCE ACTIVITIES**System Overview**

The Animal Waste Management System (AWMS) used in this project is shown in Figure 1. The system is made up of four (4) major system components:

- Manure transfer system which includes one lift station if needed
- Anaerobic digester cell(s)
- Biogas transfer system including a biogas flow-meter
- Combustion system (Flare)
- Optional combustion system

CDM – Executive Board**Figure 1. Typical GHG Mitigation Project System Overview****System Components Operation Requirements****Manure Transfer System****Training**

Training on the Manure Transfer System shall be provided to the operations personnel by the system manufacturer and installer. Training shall include: system components, normal operation, emergency operations, maintenance, and request for warranty service. Training on reporting procedures shall be provided to the productions operations manager by AgCert.

Normal Operation

The system described in Figure 1 is a typical flush system with one optional lift station. Under normal conditions, farm hands clean the manure from the barns using water hoses and squeegees. This effluent is captured and then flushed from the barns periodically. Effluent from the barns is deposited in a lift station. Upon reaching predetermined threshold, the pump engages and routes the effluent to the digester cell. Upon being treated in the digester, the effluent is then routed from the digester to the storage lagoon. Liquid from the lagoon can then be used for irrigation.

Safety Issues and Emergency Preparedness

Care should be exercised when working around the lift station and distribution box (if installed) to avoid falling into the pit.

CDM – Executive Board

Weekly Inspection

A periodic inspection shall include the following:

- Check for pipeline obstructions
- Check for leaks in exposed pipelines
- Check for corrosion at exposed joints

Alternative Operating Procedures

In the event the manure transport system becomes unusable, the farm manager shall notify AgCert in accordance with the Emergency Maintenance section of this annex. Both parties shall work together to reach an acceptable alternate method to route the effluent so that farm operations are not affected, and GHG continues to be captured. If maintenance or warranty service is required, AgCert shall contact the appropriate service provider. Upon restoration of the system the farm manager shall notify the Regional Maintenance Technician (RMT) (phone, e-mail, etc.).

Anaerobic Digester

WARNING

The gas contained in the digester cell is EXTREMELY flammable.

**Sources of ignition and smoking are not permitted
within 10 meters of the cell and gas handling system.**

Death or serious injury may result.

Training

Training on the Anaerobic Digester shall be provided to production operations personnel by the system manufacturer and installer. Training shall include: system components, start-up procedures, normal operation, emergency operations, maintenance, and request for service. Training on reporting procedures shall be provided to the productions operations personnel by AgCert.

Startup Procedures

Refer to the guide / manual for the anaerobic digester.

Loading Rate and Total Solids Content

Refer to the guide / manual for the anaerobic digester.

Normal Operation

Refer to the guide / manual for the anaerobic digester.

Safety Issues and Emergency Preparedness

- No open flame permitted within 10 meters of the digester
- Do not allow personnel to stand, sit, or lean against the digester cover
- Do not use sharp objects/tools in the vicinity of the cover

CDM – Executive Board

Weekly Inspection

A weekly inspection shall include the following:

- Cover material – check for cracks, tears, or points of distress around perimeter of digester cell.
- Check for excessive ballooning of cover or presence of odor
- Check seams for signs of gas leakage

Alternative Operating Procedures

In the event the digester cell becomes unusable, the farm manager shall notify AgCert in accordance with Emergency Maintenance section of this annex. Both parties shall work together to reach an acceptable alternate method to treat the effluent so that farm operations are not affected, and GHG gas continues to be captured. If maintenance or warranty service is required, AgCert shall contact the appropriate service provider. Upon restoration of the system the Regional Maintenance Technician shall be notified (phone, e-mail, etc.).

Biogas Transfer System and Biogas Sensor/Flow-Meter

Training

Training on the Biogas Transfer System shall be provided to the operations personnel by the system manufacturer and installer. Training shall include: system components, normal operation, emergency operations, maintenance, and request for warranty service. Training on reporting procedures shall be provided to the production operations personnel by AgCert.

Normal Operation

Biogas produced in the anaerobic digester is trapped under a positive or negative pressure geomembrane cover installed over the digester cell. The biogas is routed from the digester to the flare via PVC tubing. A flow meter, which measures gas flow, is fitted in the biogas transfer system piping.



Figure 2. Roots biogas flowmeter

Safety Issues and Emergency Preparedness

Gas to the metering system should be disconnected prior to performing maintenance on the flow-meter. Care should be taken when digging in the area where the pipeline is buried.

Preventive Maintenance

Preventive maintenance shall be conducted in accordance with manufacturer's recommendations. NOTE: A record of the cumulative biogas reading must be recorded prior to zeroing the meter.

Weekly Inspection

The weekly inspection shall include the following:

- Check for leaks in exposed pipelines
- Check for proper operation of the flow-meter

CDM – Executive Board

Alternative Operating Procedures

In the event that the biogas transfer system becomes unusable; the farm manager shall **immediately** notify AgCert in accordance with the Emergency Maintenance section of this annex. Both parties shall work together to reach an acceptable alternate method to route the biogas so that farm operations are not affected and GHG gas emissions are mitigated. If maintenance or warranty service is required, AgCert shall contact the appropriate service provider. Upon restoration of the system the RMT shall be notified (phone, e-mail, etc.).

Combustion System (Flare)

Training

Training on the Flare Combustion System shall be provided by the system manufacturer and installer. Training shall include: system components, normal operation, emergency operations, maintenance, and request for warranty service. Training on reporting procedures shall be provided to the production operations personnel by AgCert.

Normal Operation

The flare system is designed to combust the biogas whenever it is present. AgCert's flaring combustion system is automated to ensure that all biogas that exits the digester and passes through the flare (and flow meter) is combusted. Pressure control devices within the gas handling system maintain proper biogas flow to the combustion system. A continuous ignition system ensures methane combustion whenever biogas is present at the flare. The continuous ignition system is powered by a robust solar module (solar-charged battery system) that operates independently from the power grid. These solar modules are designed for rigorous outdoor application in remote locations and are proven through many years of operational experience in ranch and farm settings similar to AgCert project sites. Two (2) sparking electrodes provide operational redundancy to ensure that a minimum of one (1) spark is produced at the flare burner every 3 seconds. If biogas is present in the flare, it is immediately ignited by the sparking system. If biogas is not present, the igniter sparks harmlessly.

Safety Issues and Emergency Preparedness

Prior to performing any maintenance on the flare system, the gas flow **must** be turned off. Care should be exercised when working around the flare system as components can be extremely hot.

Preventive Maintenance

Preventive maintenance shall be conducted at least yearly.

Weekly Inspection

The weekly inspection shall include a visual inspection to determine the flare is combusting gas.

- If no flame is visible, check to see if there is a heat signature or if the flare assembly itself is hot. Night time inspection should reveal a visible light from the unit.

Alternative Operating Procedures

In the event that the flare system becomes unusable, the farm manager shall **immediately** notify AgCert in accordance with the Emergency Maintenance section of this annex. Both parties shall work together to reach an acceptable alternate method to combust the biogas so that farm operations are not affected and GHG emissions are mitigated. If maintenance or warranty service is required, AgCert shall contact the appropriate service provider. Upon restoration of the system the RMT shall be notified (phone, e-mail, etc.).

CDM – Executive Board

Optional Combustion System

If optional combustion equipment is installed during the project crediting period, the project developer will submit a change to the registered monitoring plan as required by the UNFCCC Secretariat.

Training

Training on any optional combustion system, e.g., generator, space heater, etc., shall be provided by the system manufacturer and installer. Training shall include: system components, normal operation, emergency operations, maintenance, and request for warranty service. Training on reporting procedures shall be provided to the production operations personnel by AgCert.

Normal Operation

An optional combustion system is designed to take advantage of the biogas and convert it into renewable energy. The systems can be used to generate electricity, heat a barn, or any other process approved (in writing) by AgCert and the verifying designated operational entity (DOE).

Safety Issues and Emergency Preparedness

Prior to performing any maintenance on an optional combustion system, the gas flow **must** be turned off. Care should be exercised when working around the optional combustion system as components can be extremely hot and high voltage may be present (when operating).

Preventive Maintenance

Preventive maintenance shall be conducted in accordance with manufacturer's recommendations. NOTE: In any case where it is required to zero and/or remove a meter, ensure that the meter reading is noted prior to zeroing and/or removing the meter.

Alternative Operating Procedures

In the event that the generator system becomes unusable, the user shall notify AgCert in accordance with the Emergency Maintenance section of this annex. The flare shall be used as the only method to combust GHG biogas. The user shall take appropriate action to notify his service provider should maintenance or warranty service be required. Upon restoration of the system the RMT shall be notified (phone, e-mail, etc.).

CDM – Executive Board
Maintenance, Trouble Reporting and Documentation**Emergency Maintenance:**

Situations requiring immediate attention due to failure of components of the digester or combustion system that could cause significant damage to the physical structure, or could result in the release of GHG or failure to capture GHG should be immediately reported to the Regional Maintenance Technician. If unavailable, contact the National Monitoring or Maintenance Manager of the country where the equipment is located or the International Operations and Maintenance Manager.

Title	Phone	e-mail
Regional Maintenance Technician (RMT)	Supplied during training	Supplied during training
Argentina National Monitoring Manager	(54) 348-844-6127	operationsar@agcert.com
Brazil National Monitoring Manager	(55) 212-704-50 ext 0490	operationsbr@agcert.com
Chile National Monitoring Manager	(56) 222-911-52	operationscl@agcert.com
International Monitoring Manager	(001) 321-409-7846	operations@agcert.com
Mexico National Monitoring Manager	(52) 552-122-0310	operationsmx@agcert.com
Canada National Monitoring Manager	(001) 780-409-9286	n/a

Unscheduled Maintenance:

Situations requiring maintenance (not resulting in the release or failure to capture GHG) should be reported to the Regional Maintenance Technician, normally within 1 to 24 hours of discovery.

Records Keeping

Maintenance and servicing of equipment shall be recorded.

CDM – Executive Board**MONITORING ACTIVITIES**

The following table summarizes key parameters monitored:

Table 1. Key parameters monitored

ID	Item	Applies to Project	Monitored		ER Calculation Data		Performed by	Comments
			Ex-ante	Ex-post	Primary	Secondary		
1	Sludge Removal (SIR)	✓		✓			RMT	Ensures proper disposition of sludge
2	Biogas Produced (BGP)	✓		✓		✓	FH, RMT	QA/QC
3	Methane Content (MC)	✓		✓		✓	RMT	If significant deviations are observed, more frequent measurements will be taken until the values stabilize.
4	Combustion System Operational Time (CEE)	✓		✓	✓		FH, RMT	Whenever the flare is observed to be out of service, any biogas metered from the last known operational point in time, shall be deducted from the total Biogas reading
5	Efficiency of Flare process (EFP)	✓		✓			EN	Ensures correct performance of combustion
Farm: FH – Farm Hand; DP – Data Processor; FM – Farm Manager; AgCert: RMT – Regional Maintenance Technician, QA – Quality Assurance; OP – Operations, EN - Engineer								

CDM – Executive Board**MONITORING WORK INSTRUCTIONS**

Work instructions for the monitoring of key parameters can be found on the following pages:

Work Instruction for monitoring ID 1, Sludge Removal**Summary**

Due to the physical characteristics of the manure, it becomes necessary at times to remove the sludge that has accumulated inside a biodigester. This helps ensure the digester system is operating nominally. It is important to ensure the removed sludge is disposed of properly.

This ID monitors the number of times sludge is removed from the digester and ensures the sludge is disposed of properly.

References

- AgCert Preventive Maintenance Instruction GM001, Biodigester Sludge, Removal and Disposal Instruction
- UNFCCC approved monitoring methodology: AMS-III.D, Ver 11., Methane Recovery.

Prerequisite(s)**Processes**

- I036-9, Bio-security and Safety

Training of Monitoring Personnel

- Regional Monitoring Technicians shall be trained on data collection transfer processes.
- Operations personnel shall be trained on proper disposition practices.

Equipment, Materials and Tools

- GM001, Biodigester Sludge Removal and Disposal Instruction
- GM001-F1, Sludge removal record

Calibration

- None

CDM – Executive BoardProcess

Step	Operator	Activity	Documentation	Comments
1	RMT	Determine need to remove sludge		Sludge is disposed of by applying to soil or some other aerobic process
2	RMT	Coordinate with Maintenance to schedule sludge removal	Electronic	
3	M	Performs sludge removal in accordance with the PMI		
4	M	Properly dispose of sludge		
5	M	Document disposal method on maintenance form	Paper/electronic	
Farm: FH – Farm Hand; DP – Data Processor; FM – Farm Manager; AgCert: RMT – Regional Maintenance Technician, QA – Quality Assurance; OP – Operations, EN – Engineer, M - Maintenance				

Record Control

RECORD ID	RECORD LOCATION	RETENTION TIME	DISPOSITION
GM001-F1	EnviroCert	Duration of project +2 years	Destroy

Work Instruction for monitoring ID 2, Biogas ProducedSummary

This ID monitors the volume and flow of biogas sent to the combustion system on a monthly basis. It is a quality control check to ensure proper operation of the anaerobic digester.

References

- UNFCCC approved monitoring methodology: AMS-III.D., Methane Recovery.
- Data collection forms (provided by farm manager)
- P025, Control of Monitoring and Measuring Device (MMD)
- MS004-F2, O & M Monthly Monitoring Form

Prerequisite(s)Processes

- I036-9, Bio-security and Safety

Training of Monitoring Personnel

- Regional Maintenance Technicians and operations personnel shall be trained on data collection transfer processes.

Equipment, Materials and Tools

- Biogas Flow Meter

CDM – Executive Board

Calibration

- Prior to using a measuring device, ensure it is calibrated.

Process

Step	Operator	Activity	Documentation	Comments
1	RMT	Record reading in appropriate area of MS004-F2, Monthly Monitoring Form	MS004-F2, Monthly Monitoring Form	
2	RMT	Transmit data to MLB operations	Fax, Electronic, etc	Enter data into EnviroCert
3	QA	Perform Quality Control Check for format, integrity, etc.		
4	OP	Confirm reading within expected limits IAW manufacturer guidelines.		
5	OP	Store Data		
Farm: FH – Farm Hand; DP – Data Processor; FM – Farm Manager; AgCert: RMT – Regional Monitoring Technician, QA – Quality Assurance; OP – Operations, EN – Engineer				

Record Control

RECORD ID	RECORD LOCATION	RETENTION TIME	DISPOSITION
MS004-F2, Monthly Monitoring Form	Document Control Center	Duration of project + 2 years	Destroy

Work Instruction for monitoring ID 3, Methane Content

Summary

This ID determines the methane content of the biogas. It is a snapshot of the AMWS methane production efficiency. Methane concentration is determined with a gas analyzer. The measuring equipment is calibrated in accordance with the manufacturer specifications.

References

- UNFCCC approved monitoring methodology: AMS-III.D., V.11, Methane Recovery
- P025, Control of Monitoring and Measuring Device (MMD)
- Operations Manual Gas Analyzer
- MS004-F2, Monthly Monitoring Form
- MS004-F3 or F4, O & M Maintenance Log

Prerequisite(s)

Processes

- I036-9, Bio-security and Safety

Training of Monitoring Personnel

- Operating the Gas Analyzer

CDM – Executive Board

- Regional Maintenance Technicians shall be trained on data collection transfer processes.
- Operations personnel shall be trained on data processing and storage

Equipment, Materials and Tools

- Gas Analyzer

Calibration

- As required by the manufacturer.

Process

Step	Operator	Activity	Documentation	Comments
1	RMT	Prepare the gas analyzer as directed in the operator manual.	Gas Analyzer Operations Manual	
2	RMT	Connect the Gas analyzer to the system test port.		
3	RMT	Open valve on test port		
4	RMT	Take gas reading in accordance with Operations Manual		Take 5 readings and average the results.
5	RMT	Record Gas readings in appropriate spaces of MS004-F2, Monthly Monitoring Form	MS004-F2, Monthly Monitoring Form	If there is greater than 10% points difference from previous reading, initiate appropriate maintenance actions and continue to measure on a monthly basis until the readings stabilize.
6	RMT	Close valve on test port		
7	RMT	Disconnect hose in reverse order of connection		
8	RMT	Double check that biogas test port valve is closed prior to leaving area		
9	RMT	Transmit data to MLB operations	Fax, Electronic, etc	Enter into EnviroCert
10	QA	Perform Quality Control Check for format, integrity, etc.		
11	OP	Confirm reading within expected limits IAW manufacturer guidelines.		
12	OP	Store Data		

Farm: FH – Farm Hand; DP – Data Processor; FM – Farm Manager;
 AgCert: RMT – Regional Monitoring Technician, QA – Quality Assurance; OP – Operations, EN – Engineer

Record Control

RECORD ID	RECORD LOCATION	RETENTION TIME	DISPOSITION
MS004-F2, Monthly Monitoring Form	Document Control Center	Duration of project + 2 years	Destroy

CDM – Executive Board

Work Instruction for monitoring ID 4, Fraction of Time Combustion Equipment Operates

Summary

This parameter is used to determine the fraction of time in which gas is combusted. The fraction of time will be determined as 100% less any time the flare is out of service and gas is flowing. Flare maintenance records will be used to make this determination.

References

- UNFCCC approved monitoring methodology: AMS-III.D., Methane Recovery
- MS004-F2, O & M Monthly Monitoring Form
- P025, Control of Monitoring and Measuring Device (MMD)

Prerequisite(s)

Processes

- I036-9, Bio-security and Safety

Training of Monitoring Personnel

- Regional Maintenance Technicians and operations personnel shall be trained on data collection transfer processes.

Equipment, Materials and Tools

- None

Calibration

- Prior to using a measuring device, ensure it is calibrated.

Process

Step	Operator	Activity	Documentation	Comments
1	RMT	Record reading in appropriate area of MS004-F2, Monthly Monitoring Form	MS004-F2, Monthly Monitoring Form	
2	RMT	Transmit data to MLB operations	Fax, Electronic, etc	Enter data into EnviroCert
3	QA	Perform Quality Control Check for format, integrity, etc.		
4	OP	Confirm reading within expected limits IAW manufacturer guidelines.		
5	OP	Store Data		
Farm: FH – Farm Hand; DP – Data Processor; FM – Farm Manager; AgCert: RMT – Regional Maintenance Technician; QA – Quality Assurance; OP – Operations, EN - Engineer				

Record Control

RECORD ID	RECORD LOCATION	RETENTION TIME	DISPOSITION
MS004-F2, Monthly Monitoring Form	Document Control Center	Duration of project + 2 years	Destroy

CDM – Executive Board**Work Instruction for monitoring ID 5, Flare Efficiency****Summary**

This parameter guarantees the correct performance of digester and gas recovery.

References

- Approved monitoring methodology: AMS-III.D., Methane Recovery.
- P025, Control of Monitoring and Measuring Devices
- MS004-F2, O & M Monthly Monitoring Form
- OM002, Flare Efficiency Test Instruction
- OM002-F1, Flare Efficiency Test Table

Prerequisite(s)**Processes**

Efficiency is tested prior to installation and amount of methane combusted is calculated based on the efficiency rating. According to the methodology, the flare efficiency shall be calculated as fraction of time the gas is combusted in the flare multiplied by the efficiency of the flaring process.

The enclosed-flaring combustion system is automated to ensure that all biogas that exits the digester and passes through the flare (and flow meter) is combusted. Pressure control devices within the gas handling system maintain proper biogas flow to the combustion system. A continuous ignition system ensures methane combustion whenever biogas is present at the flare. Two (2) sparking electrodes provide operational redundancy. If biogas is present in the flare, it is immediately ignited by the sparking system. If biogas is not present, the igniter sparks harmlessly. This continuous ignition system is powered by a robust solar module (solar-charged battery system) that operates independently from the power grid. The component parts are tested and verified functional on a periodic basis in accordance with manufacturer and other technical specifications.

A flare efficiency test will be performed for each new flare that is installed at an AgCert digester project site. Initial flare efficiency testing will be performed by trained personnel using calibrated equipment and a third-party verified test protocol. Both methane destruction determinations described in the flare efficiency testing protocol will be performed during the initial flare testing to ensure that the flare performs according to specifications. Results of the initial flare efficiency test will be kept on project file and will be made available to the verifying Designated Operational Entity (DOE). Subsequent operational testing shall be accomplished at least yearly using the verified test protocol.

Equipment, Materials and Tools

- Gas analyzer (a Landtec GA-90, GEM-500 or equivalent).

Calibration

- Prior to using a measuring device, ensure it is calibrated.

CDM – Executive BoardProcess

Step	Operator	Activity	Documentation	Comments
1	EN	Perform procedures outlined in OM002.	OM002-F1, Flare Efficiency Test Table	
Farm: FH – Farm Hand; DP – Data Processor; FM – Farm Manager; AgCert: RMT – Regional Monitoring Technician, QA – Quality Assurance; OP – Operations, EN - Engineer				

Record Control

RECORD ID	RECORD LOCATION	RETENTION TIME	DISPOSITION
OM002-F1, Flare Efficiency Test Table	EnviroCert	Duration of Project +2 years	Destroy

CDM – Executive Board**Annex 4A****Control of Measuring & Monitoring Devices (MMD)****PURPOSE**

The purpose of this document is to ensure that all MMD's used to demonstrate product conformity with specified requirements is identified, controlled and gauged at prescribed frequencies and that records for these activities are kept.

SCOPE

This document applies to all MMD's as well as software, used to verify product conformity with specified requirements. It applies to all individuals responsible for the selection, maintenance, and use of MMD's.

ASSOCIATED DOCUMENTS

MS004, O & M Manual
P005, Corrective and Preventative Action

DEFINITIONS

OM:	Operations and Maintenance
OPS:	Operations
QA:	Quality Assurance
RMT:	Regional Maintenance Technician
SUP:	MMD Supplier

CDM – Executive Board**PROCEDURE**

	Responsibilities	Associated Documents
1 Identify the need for measuring and/or monitoring devices/software	OM, OPS, QA, SUP	A
↓		
2 Determine type of equipment based on required accuracy	OM, QA, SUP	A
↓		
3 Upon purchase and/or installation, initiate record for equipment.	OM, OPS, RMT, SUP	A
↓		
4 Establish frequency and calibration method or verification activity	OM, QA, SUP	A
↓		
5 Correct any “Out of Tolerance” conditions.	OM, RMT, SUP	A, B

NOTES

- BOX 1. OM, OPS, and QA, together with SUP shall identify MMD’s/Software that will be used to monitor equipment performance.
- BOX 2. MMD’s/Software will be selected/designed as best suited to ensure proper performance. Determination of MMD’s/Software required shall be based on the measurements to be taken and the accuracy required.
- BOX 3. Calibrated Devices will be labeled at a minimum with a unique identification number, status of calibration and date next calibration due. Records will be maintained that show the actual state of each piece of equipment, physical conditions of calibrating equipment and actual readings obtained from calibration and/or verification. Records will be maintained in accordance with section 7.0 Record Control.

CDM – Executive Board

BOX 4. Off-the-shelf equipment will be calibrated in accordance with the SUP recommended calibration cycle.

Custom-gauged equipment calibration intervals shall be defined by OM & SUP.

The calibration intervals can be adjusted based on the analysis of previous calibration results and at the discretion of OM & SUP.

Third Party Calibration Service will be managed as if activity was performed by company personnel. This will include requirement that all Qualifying Certifications and references to NIST Standards be submitted/maintained.

BOX 5. Devices found to be out of tolerance will be adjusted/repared. An investigation will be conducted to determine the effect that the out of tolerance condition may have had on the ability to verify conformance of product to customer requirements and to determine what action, if any, should be taken.

RECORD CONTROL

RECORD ID	FILE LOCATION	RETENTION TIME	DISPOSITION
Equipment calibration records	Site of use	1 year after equipment has been removed from service	Destroyed